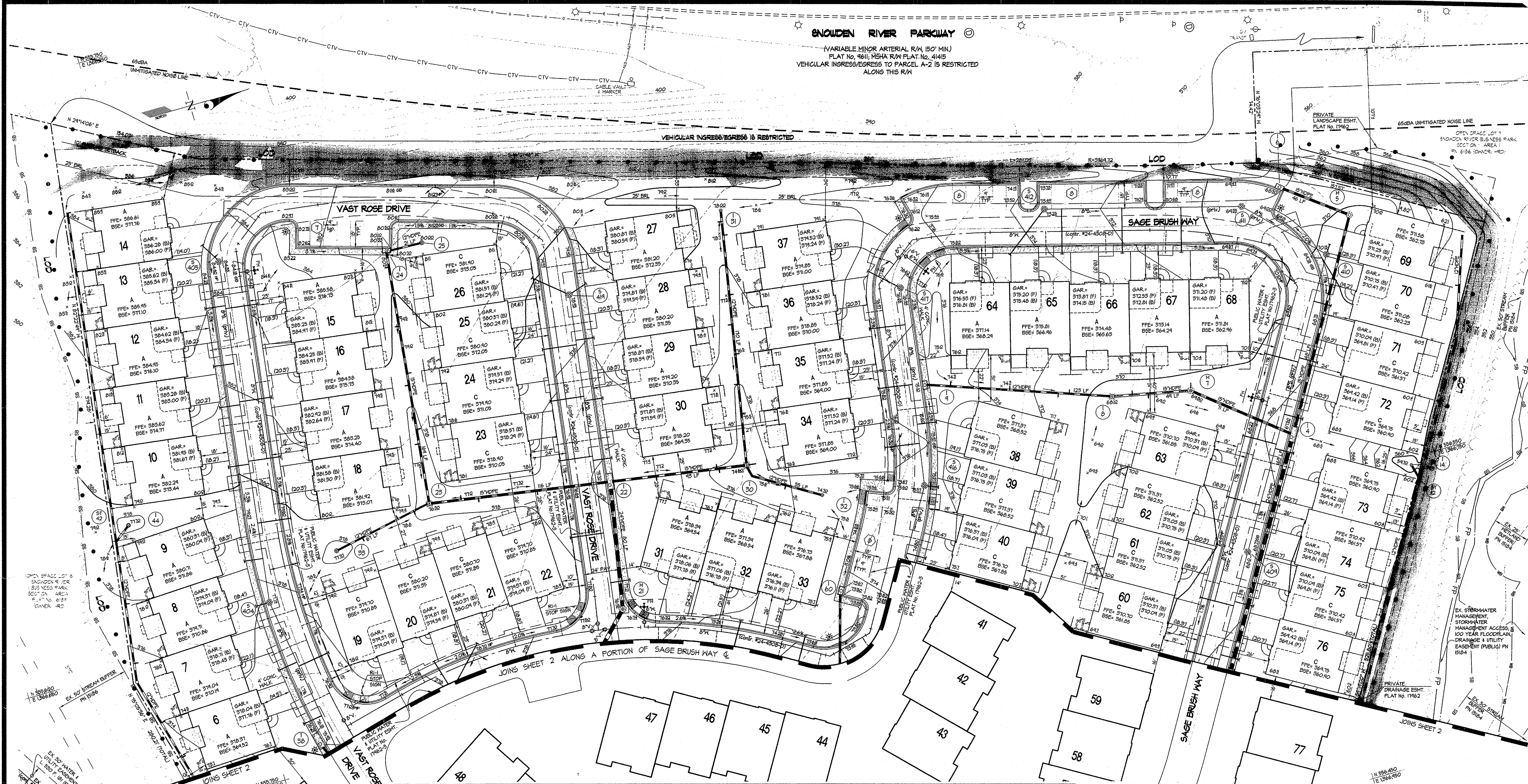
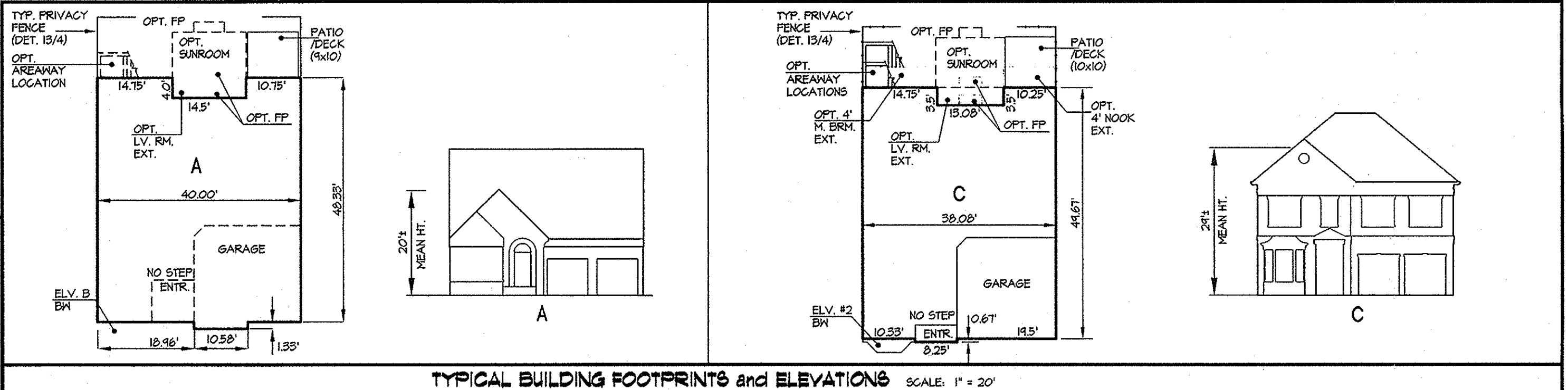


SNOWDEN RIVER PARKWAY
 (VARIABLE MINOR ARTERIAL R/W, 150' MIN)
 PLAT No. 961; MSHA R/W PLAT No. 4145
 VEHICULAR INGRESS/EGRESS IS RESTRICTED
 ALONG THIS R/W



APPROVED
PLANNING BOARD
OF HOWARD COUNTY
 DATE 05/11/06

APPROVED: HOWARD COUNTY DEPARTMENT OF PLANNING & ZONING
 Director: Frank A. Loyell 6/10/06
 Chief, Division of Land Development: Chris H. Smith 6/23/06
 Chief, Development Engineering Division: Chris DeMunnig 6/21/06



GLWGUTSCHICK LITTLE & WEBER, P.A.
 CIVIL ENGINEERS, LAND SURVEYORS, LAND PLANNERS, LANDSCAPE ARCHITECTS
 3909 NATIONAL DRIVE - SUITE 250 - BURTNSVILLE OFFICE PARK
 BURTNSVILLE, MARYLAND 20866
 TEL: 301-421-4024 BAL: 410-880-1820 DC/VA: 301-989-2524 FAX: 301-421-4186

DATE	REVISION	BY	APPR.

OWNER & PREPARED FOR:
 PATRIOT HOMES
 10211 WINCOPIN CIRCLE, SUITE 300
 COLUMBIA, MARYLAND 21044
 ATTN: RICK KUNKLE
 PH: (410) 997-5522

SITE DEVELOPMENT PLAN
SNOWDEN RIVER BUSINESS PARK
 AGE RESTRICTED ADULT HOUSING
 SECTION 1 AREA 1
 PARCEL 'A-2'
 ELECTION DISTRICT No. 6
 P.N. 17315 (F-04-190) and 17961-17963 (F-06-124)
 HOWARD COUNTY, MARYLAND

SCALE	ZONING	G. L. W. FILE No.
1" = 30'	NT-EC, IND	04065
DATE	TAX MAP - GRID	SHEET
MAY/06	37 - 19	3 OF 18