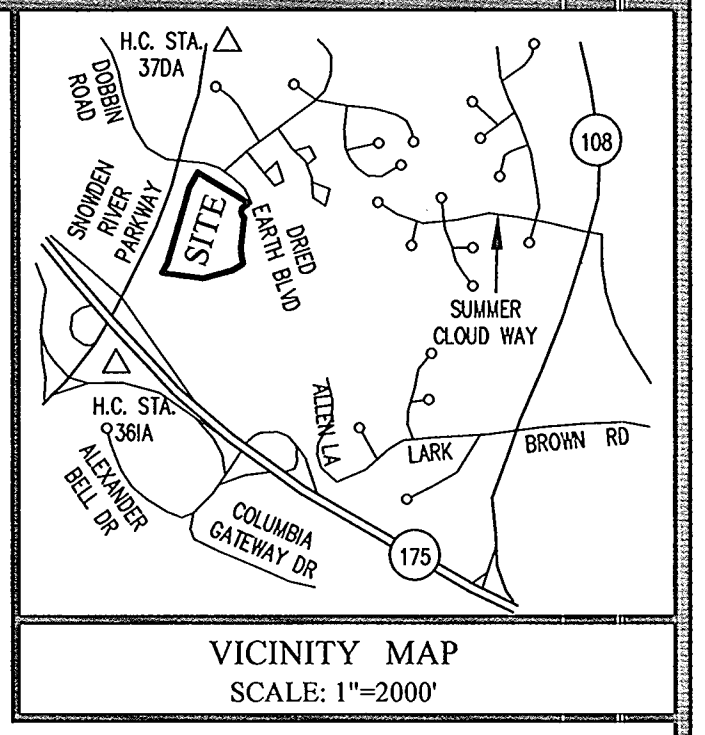
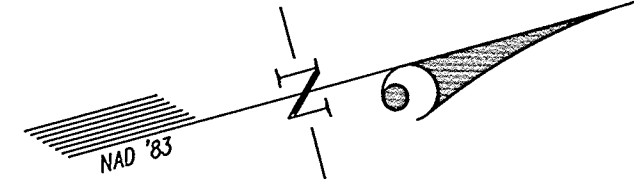


SNOWDEN RIVER PARKWAY



VICINITY MAP
SCALE: 1"=2000'

OPEN SPACE LOT 7
SNOWDEN RIVER BUSINESS PARK
P.N. 17962

OWNER'S DEDICATION
U.S. HOME CORPORATION, A DELAWARE CORPORATION, SUCCESSOR BY MERGER TO PATRIOT HOMES, INC., BY ROBERT JACOBY, DIVISION PRESIDENT, OWNER OF THE THE PROPERTY SHOWN HEREON AND DESCRIBED IN THE SURVEYOR'S CERTIFICATE, HEREBY ADOPTS THIS CONDOMINIUM PLAT.

BY: *Robert Jacoby*
ROBERT JACOBY, DIVISION PRESIDENT

ATTEST: *Thomas C. O'Connor, Jr.*

PLAT FEE - \$
PLAT RECORDING - \$
TOTAL - \$
REVISIONS - \$
DATE - 10/30/09
NOV 05 2009 12:00

SURVEYOR'S CERTIFICATE

I HEREBY CERTIFY TO THE BEST OF MY KNOWLEDGE, INFORMATION AND BELIEF, THAT THIS CONDOMINIUM PLAT, CONSISTING OF TWO (2) SHEETS, IS A CONDOMINIUM PLAT OF PHASE 19 FOR A CONDOMINIUM KNOWN AS "THE VILLAS AT SNOWDEN OVERLOOK CONDOMINIUM II", BEING PART OF PARCEL 'A-2' AS SHOWN ON SUBDIVISION PLAT ENTITLED, "REVISION PLAT, COLUMBIA, SNOWDEN RIVER BUSINESS PARK, SECTION 1 AREA 1, PARCEL 'A-2 AND OPEN SPACE LOT 7" AND RECORDED AS PLAT NUMBERS 17961-17963, AMONG THE LAND RECORDS OF HOWARD COUNTY, MARYLAND. I FURTHER CERTIFY THAT THE PLAT, TOGETHER WITH THE APPLICABLE WORDING OF THE DECLARATION, IS A CORRECT REPRESENTATION OF THE CONDOMINIUM DESCRIBED; AND THE IDENTIFICATION AND LOCATION OF EACH UNIT AND THE COMMON ELEMENTS, AS CONSTRUCTED, CAN BE DETERMINED FROM THEM.
THE TOTAL AREA INCLUDED IN PHASE 19 IS 14,993 SQUARE FEET OR 0.3442 OF AN ACRE OF LAND.

Thomas C. O'Connor, Jr. 10/30/09
FOR GUTSCHICK, LITTLE & WEBER, P.A.
THOMAS C. O'CONNOR, JR.
PROFESSIONAL LAND SURVEYOR
MD. REG. NO. 10954

MDR PLAT NO. 20837
RECORDED

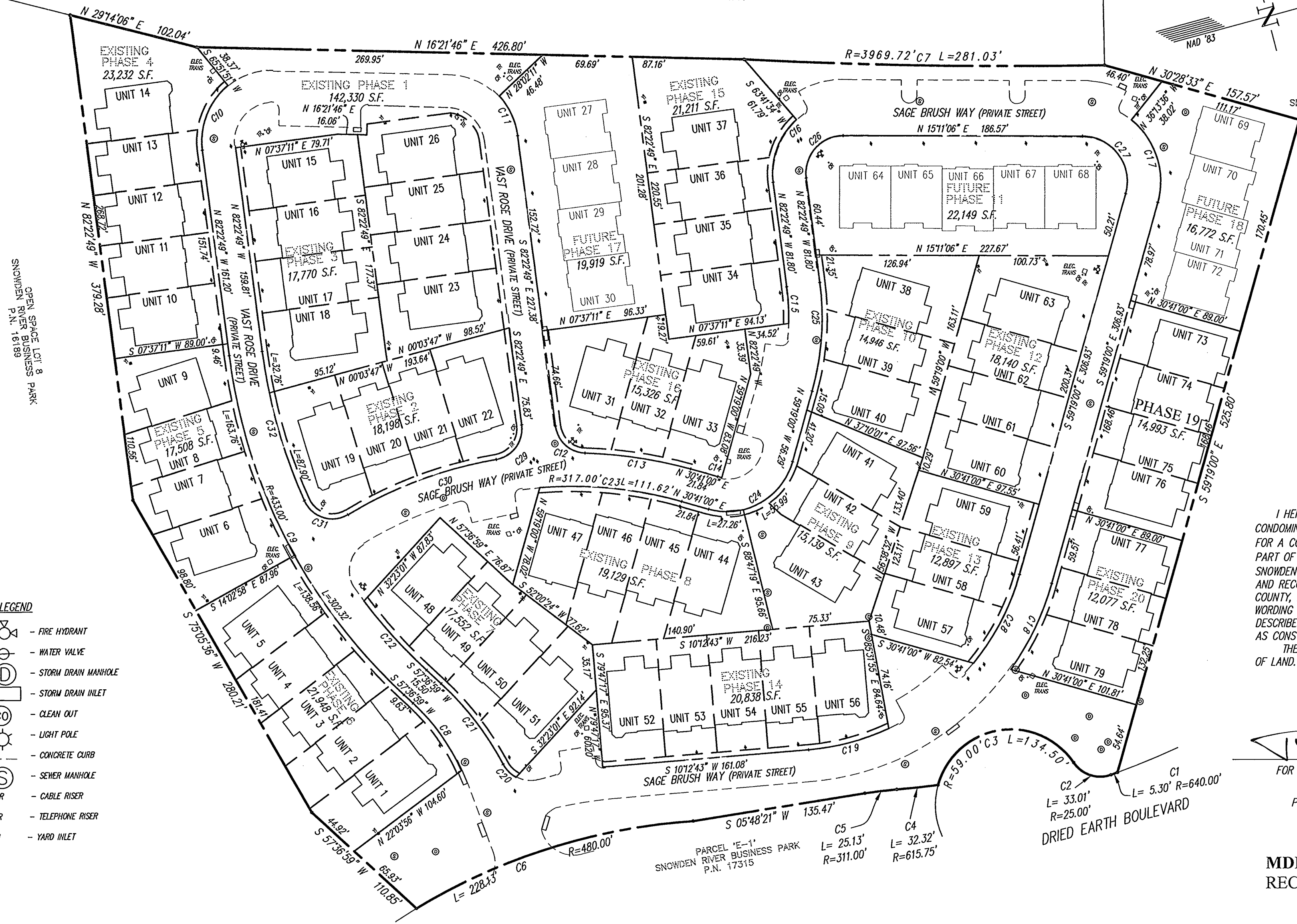
NOV - 5 2009

CONDOMINIUM PLAT
PHASE 19
**THE VILLAS AT SNOWDEN
OVERLOOK CONDOMINIUM II**

GUILFORD ELECTION DISTRICT NO. 6
HOWARD COUNTY, MARYLAND
SCALE: 1"=60' OCTOBER 2009 SHEET 1 OF 2

GLW GUTSCHICK LITTLE & WEBER, P.A.
CIVIL ENGINEERS, LAND SURVEYORS, LAND PLANNERS, LANDSCAPE ARCHITECTS
3909 NATIONAL DRIVE - SUITE 250 - BURTONSVILLE OFFICE PARK
BURTONSVILLE, MARYLAND 20886
TEL: 301-421-4024 BALT: 410-880-1820 DC/VA: 301-989-2524 FAX: 301-421-4186

DRAWN BY: *pwc* CHKD. BY: *toy* G.L.W. FILE NO. 06-070



- LEGEND**
- FIRE HYDRANT
 - WATER VALVE
 - STORM DRAIN MANHOLE
 - STORM DRAIN INLET
 - CLEAN OUT
 - LIGHT POLE
 - CONCRETE CURB
 - SEWER MANHOLE
 - CABLE RISER
 - TELEPHONE RISER
 - YARD INLET

GENERAL NOTES:
1. ALL PORTIONS OF THIS CONDOMINIUM, OTHER THAN THE UNITS, ARE GENERAL COMMON ELEMENTS.
2. PREVIOUSLY RECORDED PHASES.

CURVE TABULATION											
CURVE	RADIUS	LENGTH	TANGENT	CHORD	BEARING	DELTA	CURVE	RADIUS	LENGTH	TANGENT	CHORD
C1	640.00'	5.30'	2.65'	5.30'	S 04°58'06" E	0°28'27"	C17	61.00'	71.24'	40.31'	67.26'
C2	25.00'	33.01'	19.41'	30.66'	S 33°05'45" W	75°39'15"	C18	213.00'	74.24'	37.50'	73.86'
C3	59.00'	134.50'	128.32'	107.21'	S 05°36'57" W	130°36'50"	C19	187.00'	64.91'	32.78'	64.58'
C4	615.75'	32.32'	16.17'	32.32'	S 08°55'51" W	3°00'28"	C20	24.00'	14.39'	7.42'	14.18'
C5	311.00'	25.13'	12.57'	25.12'	S 08°07'13" W	4°37'44"	C21	233.00'	79.58'	40.18'	79.20'
C6	480.00'	228.13'	116.26'	225.99'	S 02°30'25" E	271°3'53"	C22	407.00'	72.67'	36.43'	72.58'
C7	3969.72'	281.03'	140.57'	280.97'	N 15°58'12" E	4°03'22"	C23	317.00'	111.62'	56.39'	111.05'
C8	159.00'	64.98'	32.95'	64.52'	S 69°19'24" W	23°24'51"	C24	53.00'	83.25'	53.00'	74.95'
C9	433.00'	302.32'	157.61'	296.21'	S 77°37'05" W	40°00'12"	C25	213.00'	85.74'	43.46'	85.16'
C10	55.00'	55.91'	30.64'	53.53'	S 53°15'29" E	58°14'40"	C26	29.00'	49.38'	33.11'	43.63'
C11	55.00'	34.23'	17.69'	33.68'	S 79°47'30" W	35°39'21"	C27	35.00'	64.45'	46.03'	55.72'
C12	24.00'	33.88'	20.45'	31.13'	N 57°10'59" E	80°52'23"	C28	187.00'	78.22'	39.69'	77.65'
C13	343.00'	83.43'	41.92'	83.23'	S 23°42'54" W	13°56'13"	C29	24.00'	36.67'	22.99'	33.20'
C14	27.00'	3.34'	1.67'	3.34'	N 27°08'12" E	7°05'30"	C30	343.00'	123.85'	62.60'	123.17'
C15	187.00'	28.71'	14.38'	28.68'	N 77°58'57" W	8°47'46"	C31	24.00'	40.28'	26.73'	35.72'
C16	55.00'	53.83'	29.29'	51.70'	S 54°20'38" E	56°04'23"	C32	407.00'	120.66'	60.78'	120.22'

DATE OF LATEST FIELD WORK: OCTOBER 26, 2009

RECORDED: _____
PLAT NO.: _____

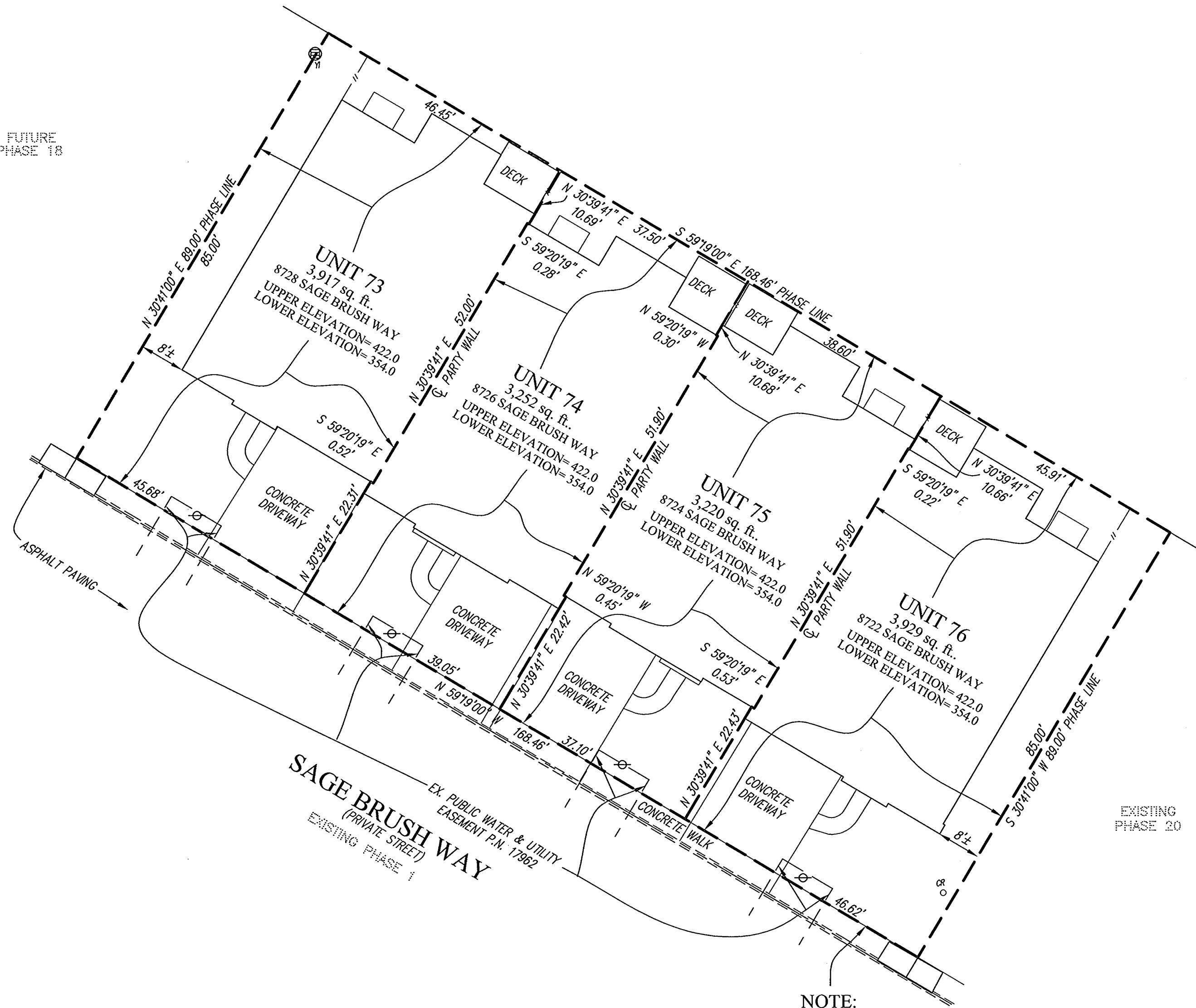
11-5-09

P114321 MSA CDU 2125 4595-1

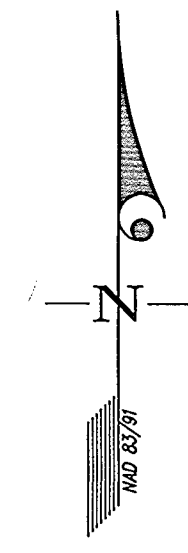
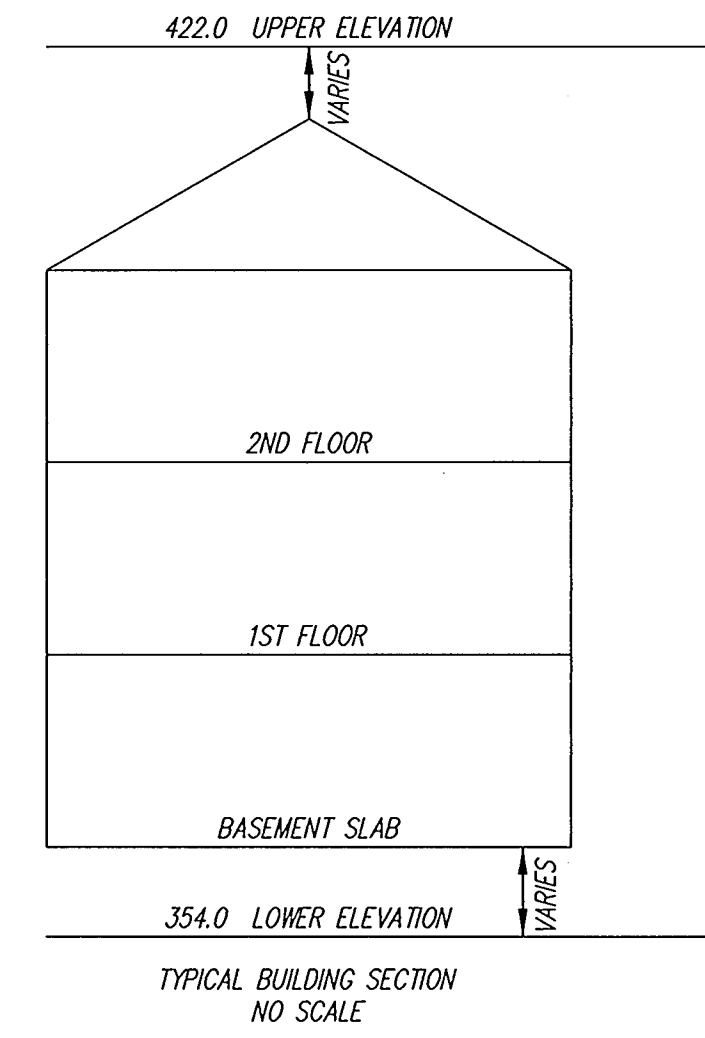
Maryland State Archives

HOWARD COUNTY CIRCUIT COURT (Plat Book) Plat MDR 20837-20838, MSA_C2125_4595. Date available 20091105. Retrieved 10/12/2017. L:\CAD\DRAWINGS\04065\CONDO\PLATS\06-070 CV PH 19.dwg. PLOTTED: 10/29/2009 2:35 PM. LAST SAVED: 10/29/2009 2:34 PM. PLOTTED BY: Paul Clark

FUTURE PHASE 18



NOTE:
LIMIT OF UNIT
COINCIDES WITH APPROXIMATE
BACK OF CONCRETE WALK



PLAT FEE-H
PLAT RECORDING
TOTAL
RES. FEE
FOR TLR
Nov 05, 2009

Rec'd # 576
Dik # 555
12:01

LEGEND

- STORM DRAIN INLET
- WATER VALVE
- CONCRETE CURB
- CABLE RISER
- YARD INLET
- FENCE

MDR PLAT NO. 20838
RECORDED
NOV - 5 2009

CONDOMINIUM PLAT
PHASE 19 - UNIT PLAN
THE VILLAS AT SNOWDEN
OVERLOOK CONDOMINIUM II

GUILFORD ELECTION DISTRICT NO. 6
HOWARD COUNTY, MARYLAND
SCALE: 1"=15' OCTOBER 2009 SHEET 2 OF 2

GLW GUTSCHICK LITTLE & WEBER, P.A.
CIVIL ENGINEERS, LAND SURVEYORS, LAND PLANNERS, LANDSCAPE ARCHITECTS
3909 NATIONAL DRIVE - SUITE 250 - BURTONSVILLE OFFICE PARK
BURTONSVILLE, MARYLAND 20866
TEL: 301-421-4024 BALT: 410-880-1820 DC/VA: 301-989-2524 FAX: 301-421-4186

DRAWN BY: PWC CHKD. BY: TPY G.L.W. FILE NO. 06-070

HOWARD COUNTY CIRCUIT COURT (Plat Book) Plat MDR 20837-20838, MSA_C2125_4595. Date available 2009/11/05. Printed 10/26/09
 L:\CADD\DRAWINGS\04065\CONDO\PLATS\06-070 UT PH 19-PL2.dwg, PLOTTED BY: Paul Clerk
 PLOTTED: 10/29/2009 2:36 PM, LAST SAVED: 10/29/2009 2:36 PM

RECORDED: _____
PLAT NO.: _____

DATE OF LATEST FIELD WORK: OCTOBER 26, 2009

1169322 MSA CU 2125 4595-2