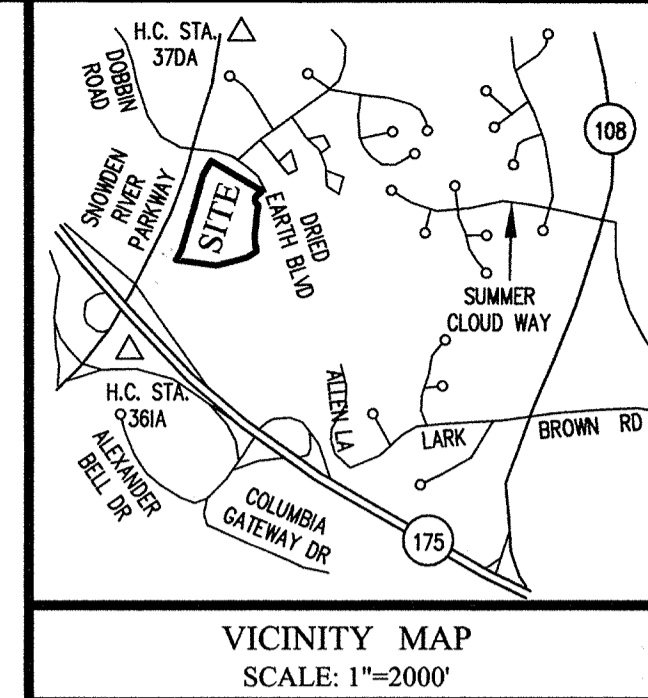
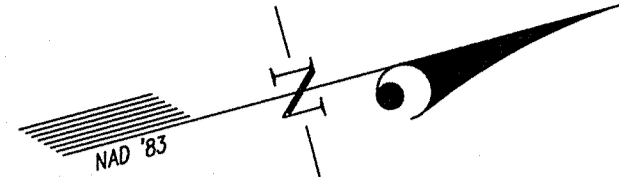


SNOWDEN RIVER PARKWAY



VICINITY MAP  
SCALE: 1"=2000'

OPEN SPACE LOT 7  
SNOWDEN RIVER BUSINESS PARK  
P.N. 17962

**OWNER'S DEDICATION**

U.S. HOME CORPORATION, A DELAWARE CORPORATION, SUCCESSOR BY MERGER TO PATRIOT HOMES, INC., BY ROBERT JACOBY, DIVISION PRESIDENT, OWNER OF THE THE PROPERTY SHOWN HEREON AND DESCRIBED IN THE SURVEYOR'S CERTIFICATE, HEREBY ADOPTS THIS CONDOMINIUM PLAT.

BY: Robert Jacoby  
ROBERT JACOBY, DIVISION PRESIDENT

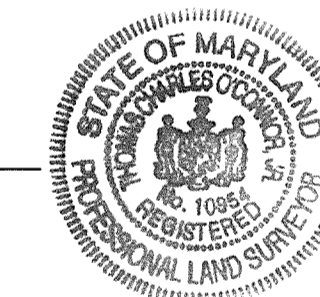
ATTEST: [Signature]

**SURVEYOR'S CERTIFICATE**

I HEREBY CERTIFY TO THE BEST OF MY KNOWLEDGE, INFORMATION AND BELIEF, THAT THIS CONDOMINIUM PLAT, CONSISTING OF TWO (2) SHEETS, IS A CONDOMINIUM PLAT OF PHASE 12 FOR A CONDOMINIUM KNOWN AS "THE VILLAS AT SNOWDEN OVERLOOK CONDOMINIUM II", BEING PART OF PARCEL "A-2" AS SHOWN ON SUBDIVISION PLAT ENTITLED, "REVISION PLAT, COLUMBIA, SNOWDEN RIVER BUSINESS PARK, SECTION 1 AREA 1, PARCEL 'A-2 AND OPEN SPACE LOT 7" AND RECORDED AS PLAT NUMBERS 17961-17963, AMONG THE LAND RECORDS OF HOWARD COUNTY, MARYLAND. I FURTHER CERTIFY THAT THE PLAT, TOGETHER WITH THE APPLICABLE WORDING OF THE DECLARATION, IS A CORRECT REPRESENTATION OF THE CONDOMINIUM DESCRIBED; AND THE IDENTIFICATION AND LOCATION OF EACH UNIT AND THE COMMON ELEMENTS, AS CONSTRUCTED, CAN BE DETERMINED FROM THEM.

THE TOTAL AREA INCLUDED IN PHASE 12 IS 18,140 SQUARE FEET OR 0.4164 OF AN ACRE OF LAND.

[Signature] 10/15/09  
FOR GUTSCHICK, LITTLE & WEBER, P.A.  
THOMAS C. O'CONNOR, JR.  
PROFESSIONAL LAND SURVEYOR  
MD. REG. NO. 10954



MDR PLAT NO. 20820  
RECORDED

OCT 26 2009

PLAT FEE-A  
PLAT RECORDING  
TOTAL  
Res# CHRG Rpt# 534  
HDR SLC Blk# 193  
Oct 26, 2009 01:02

CONDOMINIUM PLAT  
PHASE 12  
**THE VILLAS AT SNOWDEN  
OVERLOOK CONDOMINIUM II**

GUILFORD ELECTION DISTRICT NO. 6  
HOWARD COUNTY, MARYLAND  
SCALE: 1"=60' OCTOBER 2009

SHEET 1 OF 2

**GLW GUTSCHICK LITTLE & WEBER, P.A.**

CIVIL ENGINEERS, LAND SURVEYORS, LAND PLANNERS, LANDSCAPE ARCHITECTS  
3909 NATIONAL DRIVE - SUITE 250 - BURTONSVILLE OFFICE PARK  
BURTONSVILLE, MARYLAND 20886  
TEL: 301-421-4024 BALT: 410-880-1820 DC/VA: 301-989-2524 FAX: 301-421-4186

DRAWN BY: pvc CHKD. BY: 19 G.L.W. FILE NO. 06-070

P168645 MSA Cn 2125 4588-1



- LEGEND**
- FIRE HYDRANT
  - WATER VALVE
  - STORM DRAIN MANHOLE
  - STORM DRAIN INLET
  - CLEAN OUT
  - LIGHT POLE
  - CONCRETE CURB
  - SEWER MANHOLE
  - CABLE RISER
  - TELEPHONE RISER
  - YARD INLET

- GENERAL NOTES:**
- ALL PORTIONS OF THIS CONDOMINIUM, OTHER THAN THE UNITS, ARE GENERAL COMMON ELEMENTS.
  - PREVIOUSLY RECORDED PHASES.

**CURVE TABULATION**

CURVE	RADIUS	LENGTH	TANGENT	CHORD	BEARING	DELTA	CURVE	RADIUS	LENGTH	TANGENT	CHORD	BEARING	DELTA
C1	640.00'	5.30'	2.65'	5.30'	S 04°58'06" E	0°28'27"	C17	61.00'	71.24'	40.31'	67.26'	S 87°13'42" W	66°54'37"
C2	25.00'	33.01'	19.41'	30.66'	S 33°05'45" W	75°39'15"	C18	213.00'	74.24'	37.50'	73.86'	N 49°19'55" W	19°58'09"
C3	59.00'	134.50'	128.32'	107.21'	S 05°36'57" W	130°36'50"	C19	187.00'	64.91'	32.78'	64.58'	N 00°16'05" E	19°53'16"
C4	615.75'	32.32'	16.17'	32.32'	S 08°55'51" W	3°00'28"	C20	24.00'	14.39'	7.42'	14.18'	N 60°00'21" E	34°21'40"
C5	311.00'	25.13'	12.57'	25.12'	S 08°07'13" W	4°37'44"	C21	233.00'	79.58'	40.18'	79.20'	S 67°24'05" W	19°34'13"
C6	480.00'	228.13'	116.26'	225.99'	S 02°30'25" E	27°13'53"	C22	407.00'	72.67'	36.43'	72.58'	N 62°43'54" E	10°13'50"
C7	3969.72'	281.03'	140.57'	280.97'	N 15°58'12" E	4°03'22"	C23	317.00'	111.62'	56.39'	111.05'	S 20°35'46" W	20°10'29"
C8	159.00'	64.98'	32.95'	64.52'	S 69°19'24" W	23°24'51"	C24	53.00'	83.25'	53.00'	74.95'	N 14°19'00" W	90°00'00"
C9	433.00'	302.32'	157.61'	296.21'	S 77°37'05" W	40°00'12"	C25	213.00'	85.74'	43.46'	85.16'	N 70°50'55" W	23°03'50"
C10	55.00'	55.91'	30.64'	53.53'	S 53°15'29" E	58°14'40"	C26	29.00'	49.38'	33.11'	43.63'	S 33°35'52" E	97°33'56"
C11	55.00'	34.23'	17.69'	33.68'	S 79°47'30" W	35°39'21"	C27	35.00'	64.45'	46.03'	55.72'	S 67°56'03" W	105°29'54"
C12	24.00'	33.88'	20.45'	31.13'	N 57°10'59" E	80°52'23"	C28	187.00'	78.22'	39.69'	77.65'	N 47°19'59" W	23°58'01"
C13	343.00'	83.43'	41.92'	83.23'	S 23°42'54" W	13°56'13"	C29	24.00'	36.67'	22.99'	33.20'	N 38°36'47" W	87°32'06"
C14	27.00'	3.34'	1.67'	3.34'	N 27°08'12" E	7°05'30"	C30	343.00'	123.85'	62.60'	123.17'	S 05°11'22" E	20°41'15"
C15	187.00'	28.71'	14.38'	28.68'	N 77°58'57" W	8°47'46"	C31	24.00'	40.28'	26.73'	35.72'	N 32°33'01" E	96°10'01"
C16	55.00'	53.83'	29.29'	51.70'	S 54°20'38" E	56°04'23"	C32	407.00'	120.66'	60.78'	120.22'	N 89°07'36" E	16°59'09"

DATE OF LATEST FIELD WORK: OCTOBER 13, 2009

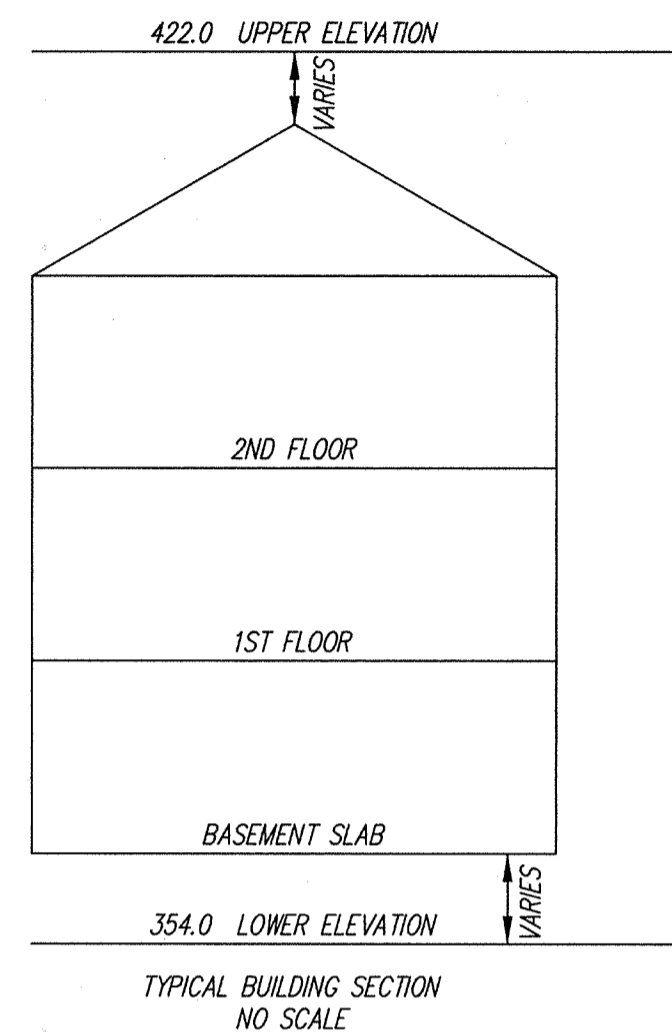
RECORDED: \_\_\_\_\_  
PLAT NO.: \_\_\_\_\_

HOWARD COUNTY RECORDS CONTROL UNIT PLOT # 20820-20821, MSA, C2125, 4588. Date available 2009/10/26. Printed 10/13/2017. PLOTTED: 10/15/2009 6:59 AM, LAST SAVED: 10/15/2009 6:59 AM.

Maryland State Archives

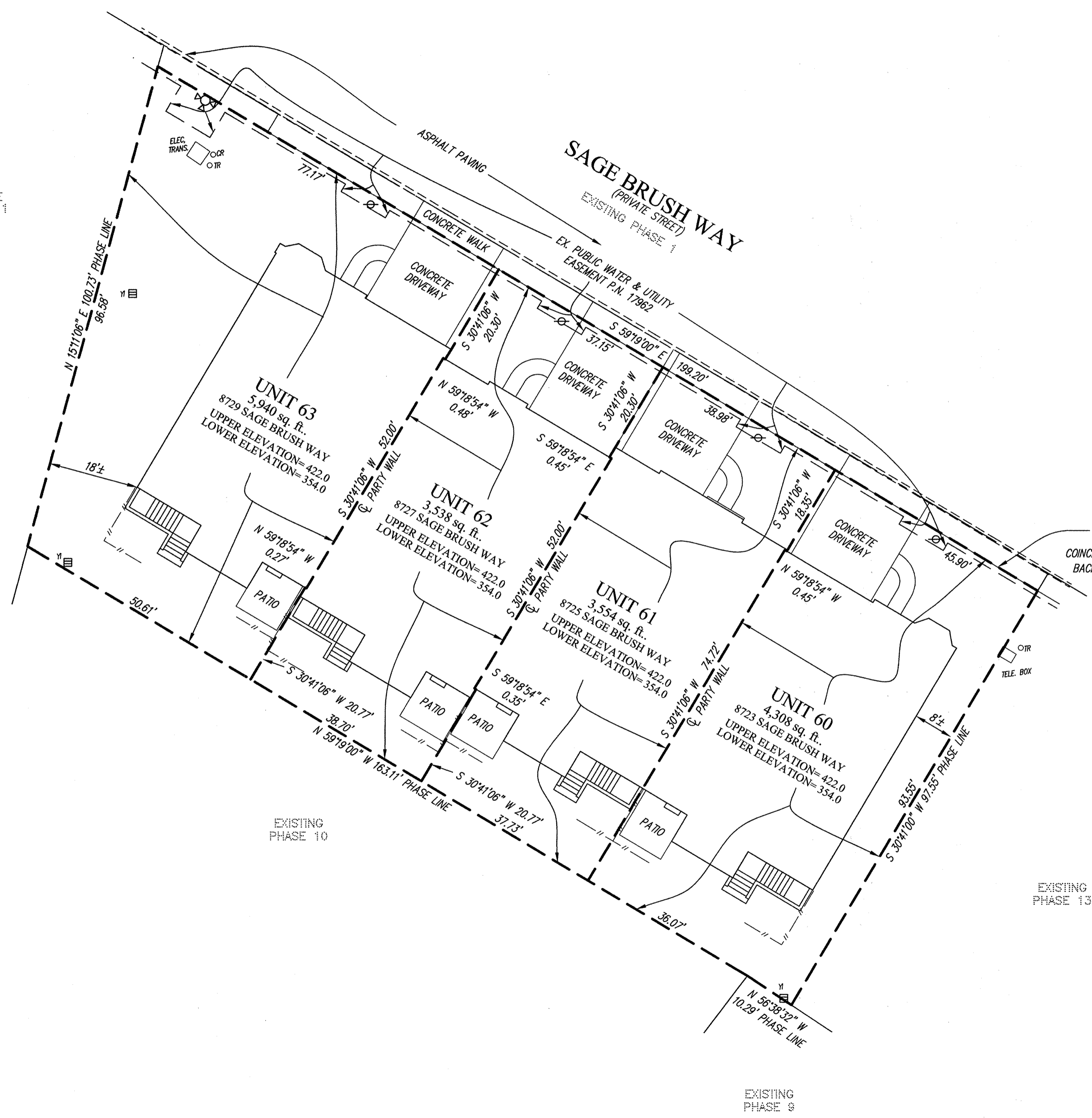


MDR PLAT NO. 20821  
RECORDED



PLAT FEE-A  
PLAT RECORDING  
TOTAL  
Res# CHB6 Rcpt # 534  
MDR SLC Blk # 13  
Oct 26, 2009 01:02

FUTURE  
PHASE 11



NOTE:  
LIMIT OF UNIT  
COINCIDES WITH APPROXIMATE  
BACK OF CONCRETE WALK

LEGEND

- FIRE HYDRANT
- WATER VALVE
- CONCRETE CURB
- CR - CABLE RISER
- TR - TELEPHONE RISER
- YI - YARD INLET
- // - FENCE

CONDOMINIUM PLAT  
PHASE 12 - UNIT PLAN  
THE VILLAS AT SNOWDEN  
OVERLOOK CONDOMINIUM II

GUILFORD ELECTION DISTRICT NO. 6  
HOWARD COUNTY, MARYLAND  
SCALE: 1"=15' OCTOBER 2009

SHEET 2 OF 2

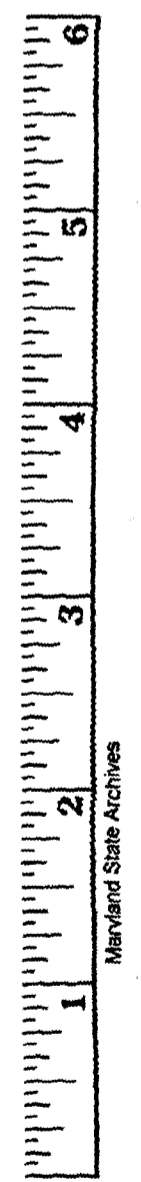
**GLW** GUTSCHICK LITTLE & WEBER, P.A.  
CIVIL ENGINEERS, LAND SURVEYORS, LAND PLANNERS, LANDSCAPE ARCHITECTS  
3909 NATIONAL DRIVE - SUITE 250 - BURTONSVILLE OFFICE PARK  
BURTONSVILLE, MARYLAND 20866  
TEL: 301-421-4024 BALT: 410-880-1820 DC/VA: 301-989-2524 FAX: 301-421-4186

DRAWN BY: *PWC* CHKD. BY: *TSJ* G.L.W. FILE NO. 06-070

*Howard County*  
10-26-09

RECORDED: \_\_\_\_\_  
PLAT NO.: \_\_\_\_\_

DATE OF LATEST FIELD WORK: OCTOBER 13, 2009



Maryland State Archives

HOWARD COUNTY, MARYLAND  
 PLOT NO. 20821  
 DATE: 10/13/2009 7:43 AM  
 LAST SAVED: 10/15/2009 7:01 AM  
 PLOTTED BY: Paul Clark  
 DATE AVAILABLE: 2009/10/26  
 PRINTED: 10/13/2017

P168646 MSA CSU 2125 4588-2