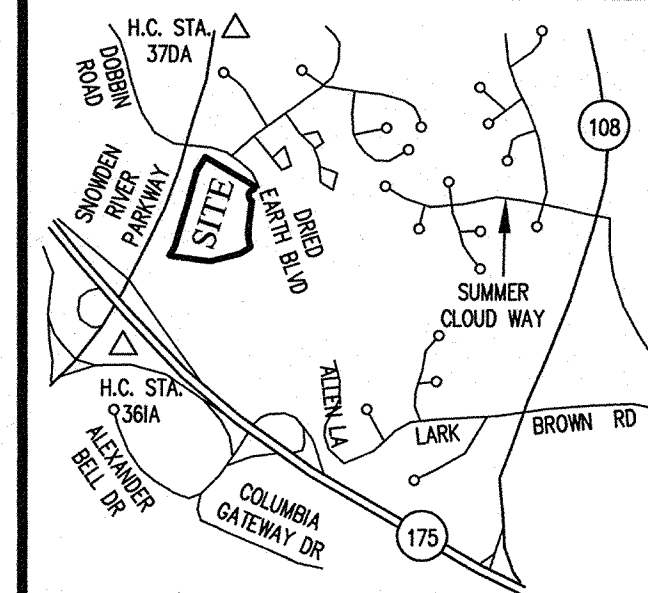
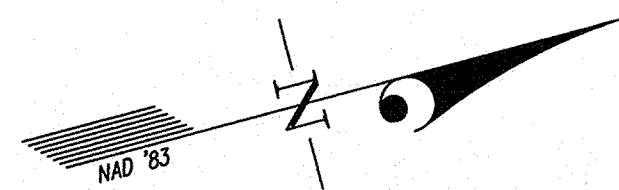


SNOWDEN RIVER PARKWAY



VICINITY MAP
SCALE: 1"=2000'

OPEN SPACE LOT 7
SNOWDEN RIVER BUSINESS PARK
P.N. 17962

OWNER'S DEDICATION

U.S. HOME CORPORATION, A DELAWARE CORPORATION, SUCCESSOR BY MERGER TO PATRIOT HOMES, INC., BY ROBERT JACOBY, DIVISION PRESIDENT, OWNER OF THE THE PROPERTY SHOWN HEREON AND DESCRIBED IN THE SURVEYOR'S CERTIFICATE, HEREBY ADOPTS THIS CONDOMINIUM PLAT.

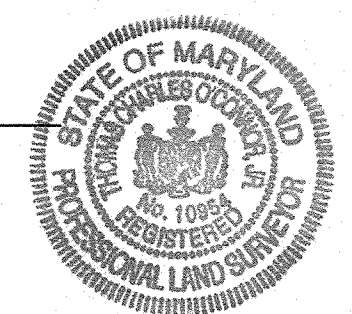
BY: *Robert Jacoby*
ROBERT JACOBY, DIVISION PRESIDENT

ATTEST: *Lynae B. Ryan*

SURVEYOR'S CERTIFICATE

I HEREBY CERTIFY TO THE BEST OF MY KNOWLEDGE, INFORMATION AND BELIEF, THAT THIS CONDOMINIUM PLAT, CONSISTING OF TWO (2) SHEETS, IS A CONDOMINIUM PLAT OF PHASE 15 FOR A CONDOMINIUM KNOWN AS "THE VILLAS AT SNOWDEN OVERLOOK CONDOMINIUM II", BEING PART OF PARCEL "A-2" AS SHOWN ON SUBDIVISION PLAT ENTITLED, "REVISION PLAT, COLUMBIA, SNOWDEN RIVER BUSINESS PARK, SECTION 1 AREA 1, PARCEL "A-2 AND OPEN SPACE LOT 7" AND RECORDED AS PLAT NUMBERS 17961-17963, AMONG THE LAND RECORDS OF HOWARD COUNTY, MARYLAND. I FURTHER CERTIFY THAT THE PLAT, TOGETHER WITH THE APPLICABLE WORDING OF THE DECLARATION, IS A CORRECT REPRESENTATION OF THE CONDOMINIUM DESCRIBED; AND THE IDENTIFICATION AND LOCATION OF EACH UNIT AND THE COMMON ELEMENTS, AS CONSTRUCTED, CAN BE DETERMINED FROM THEM.
THE TOTAL AREA INCLUDED IN PHASE 15 IS 21,211 SQUARE FEET OR 0.4869 OF AN ACRE OF LAND.

Thomas C. O'Connor, Jr. 3/12/09
FOR GUTSCHICK, LITTLE & WEBER, P.A.
THOMAS C. O'CONNOR, JR.
PROFESSIONAL LAND SURVEYOR
MD. REG. NO. 10954



MDR PLAT NO. 20528
RECORDED
APR 16 2009

PLAT FEE-A
PLAT RECORDING
TOTAL
Res# H083 Rpt# 7893
HDR SLC Blk# 2886
Apr 16, 2009 11:34

CONDOMINIUM PLAT
PHASE 15
**THE VILLAS AT SNOWDEN
OVERLOOK CONDOMINIUM II**
GUILFORD ELECTION DISTRICT NO. 6
HOWARD COUNTY, MARYLAND
SCALE: 1"=60' MARCH 2009 SHEET 1 OF 2

GLW GUTSCHICK LITTLE & WEBER, P.A.
CIVIL ENGINEERS, LAND SURVEYORS, LAND PLANNERS, LANDSCAPE ARCHITECTS
3909 NATIONAL DRIVE - SUITE 250 - BURTONSVILLE OFFICE PARK
BURTONSVILLE, MARYLAND 20866
TEL: 301-421-4024 BALT: 410-880-1820 DC/VA: 301-989-2524 FAX: 301-421-4186

DRAWN BY: *pmc* CHKD BY: *ty* G.L.W. FILE NO. 06-070

p162300 USA CM 2125 4455-1

- LEGEND**
- FIRE HYDRANT
 - WATER VALVE
 - STORM DRAIN MANHOLE
 - STORM DRAIN INLET
 - CLEAN OUT
 - LIGHT POLE
 - CONCRETE CURB
 - SEWER MANHOLE
 - CABLE RISER
 - TELEPHONE RISER
 - YARD INLET

GENERAL NOTES:

1. ALL PORTIONS OF THIS CONDOMINIUM, OTHER THAN THE UNITS, ARE GENERAL COMMON ELEMENTS.
2. PREVIOUSLY RECORDED PHASES.

CURVE TABULATION													
CURVE	RADIUS	LENGTH	TANGENT	CHORD	BEARING	DELTA	CURVE	RADIUS	LENGTH	TANGENT	CHORD	BEARING	DELTA
C1	640.00'	5.30'	2.65'	5.30'	S 04°58'06" E	0°28'27"	C17	61.00'	71.24'	40.31'	67.26'	S 87°13'42" W	66°54'37"
C2	25.00'	33.01'	19.41'	30.66'	S 33°05'45" W	75°39'15"	C18	213.00'	74.24'	37.50'	73.86'	N 49°19'55" W	19°58'09"
C3	59.00'	134.50'	128.32'	107.21'	S 05°36'57" W	130°36'50"	C19	187.00'	64.91'	32.78'	64.58'	N 00°16'05" E	19°53'16"
C4	615.75'	32.32'	16.17'	32.32'	S 08°55'51" W	3°00'28"	C20	24.00'	14.39'	7.42'	14.18'	N 60°00'21" E	34°21'40"
C5	311.00'	25.13'	12.57'	25.12'	S 08°07'13" W	4°37'44"	C21	233.00'	79.58'	40.18'	79.20'	S 67°24'05" W	19°34'13"
C6	480.00'	228.13'	116.26'	225.99'	S 02°30'25" E	27°13'53"	C22	407.00'	72.67'	36.43'	72.58'	N 62°43'54" E	101°3'50"
C7	3969.72'	281.03'	140.57'	280.97'	N 15°58'12" E	4°03'22"	C23	317.00'	111.62'	56.39'	111.05'	S 20°35'46" W	20°10'29"
C8	159.00'	64.98'	32.95'	64.52'	S 69°19'24" W	23°24'51"	C24	53.00'	83.25'	53.00'	74.95'	N 14°19'00" W	90°00'00"
C9	433.00'	302.32'	157.61'	296.21'	S 77°37'05" W	40°00'12"	C25	213.00'	85.74'	43.46'	85.16'	N 70°50'55" W	23°03'50"
C10	55.00'	55.91'	30.64'	53.53'	S 53°15'29" E	58°14'40"	C26	29.00'	49.39'	33.11'	43.63'	S 33°35'52" E	97°33'56"
C11	55.00'	34.23'	17.69'	33.68'	S 79°47'30" W	35°39'21"	C27	35.00'	64.45'	46.03'	55.72'	S 67°36'03" W	105°29'54"
C12	24.00'	33.88'	20.45'	31.13'	N 57°10'59" E	80°52'23"	C28	187.00'	78.22'	39.69'	77.65'	N 47°19'59" W	23°58'01"
C13	343.00'	83.43'	41.92'	83.23'	S 23°42'54" W	13°56'13"	C29	24.00'	36.67'	22.99'	33.20'	N 38°36'47" W	87°32'06"
C14	27.00'	3.34'	1.67'	3.34'	N 27°08'12" E	7°05'30"	C30	343.00'	123.85'	62.60'	123.17'	S 05°11'22" E	20°41'15"
C15	187.00'	28.71'	14.38'	28.68'	N 77°58'57" W	8°47'46"	C31	24.00'	40.28'	26.73'	35.72'	N 32°33'01" E	96°10'01"
C16	55.00'	53.83'	29.29'	51.70'	S 54°20'38" E	56°04'23"	C32	407.00'	120.66'	60.78'	120.22'	N 89°07'36" E	16°59'09"

DATE OF LATEST FIELD WORK: MARCH 5, 2009

RECORDED: _____
PLAT NO.: _____

HOWARD COUNTY RECORDS: 2009-04-16 9:12 AM, LAST SAVED: 3/12/2009 9:12 AM, PLOTTED BY: Paul Clark

Maryland State Archives

SNOWDEN RIVER PARKWAY

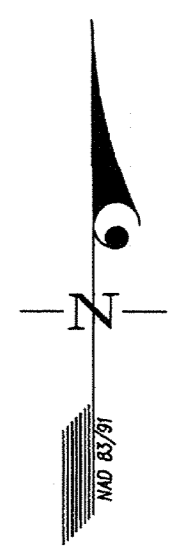
N 63°41'34" E 61.79' PHASE LINE
 L=57.74' R=59.00'
 CHD: S 54°20'38" E, 55.46'

EXISTING PHASE 1
 SAGE BRUSH WAY
 (PRIVATE STREET)

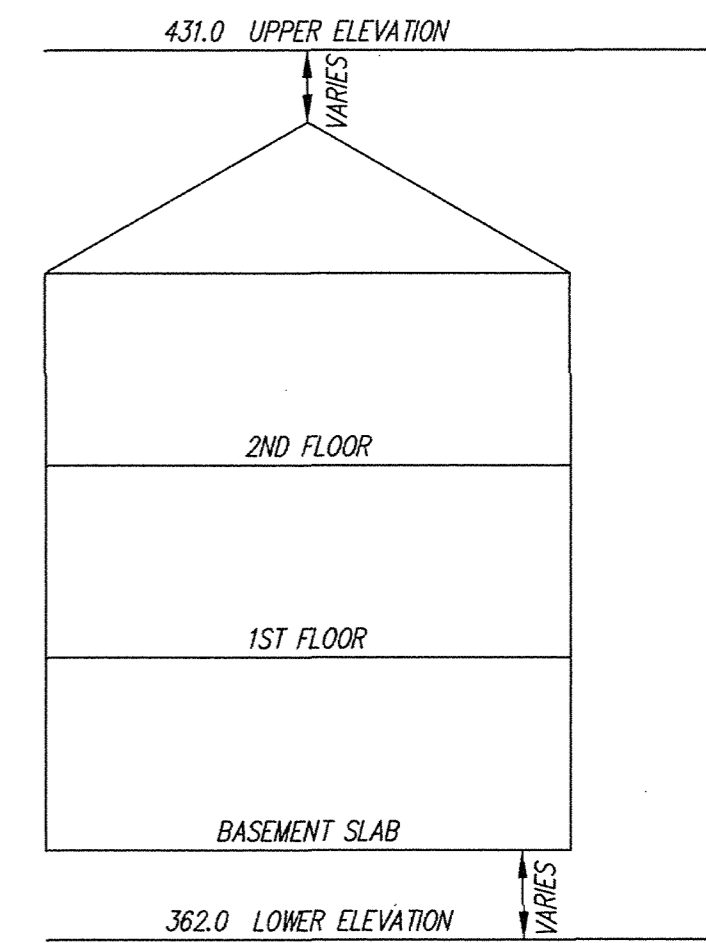
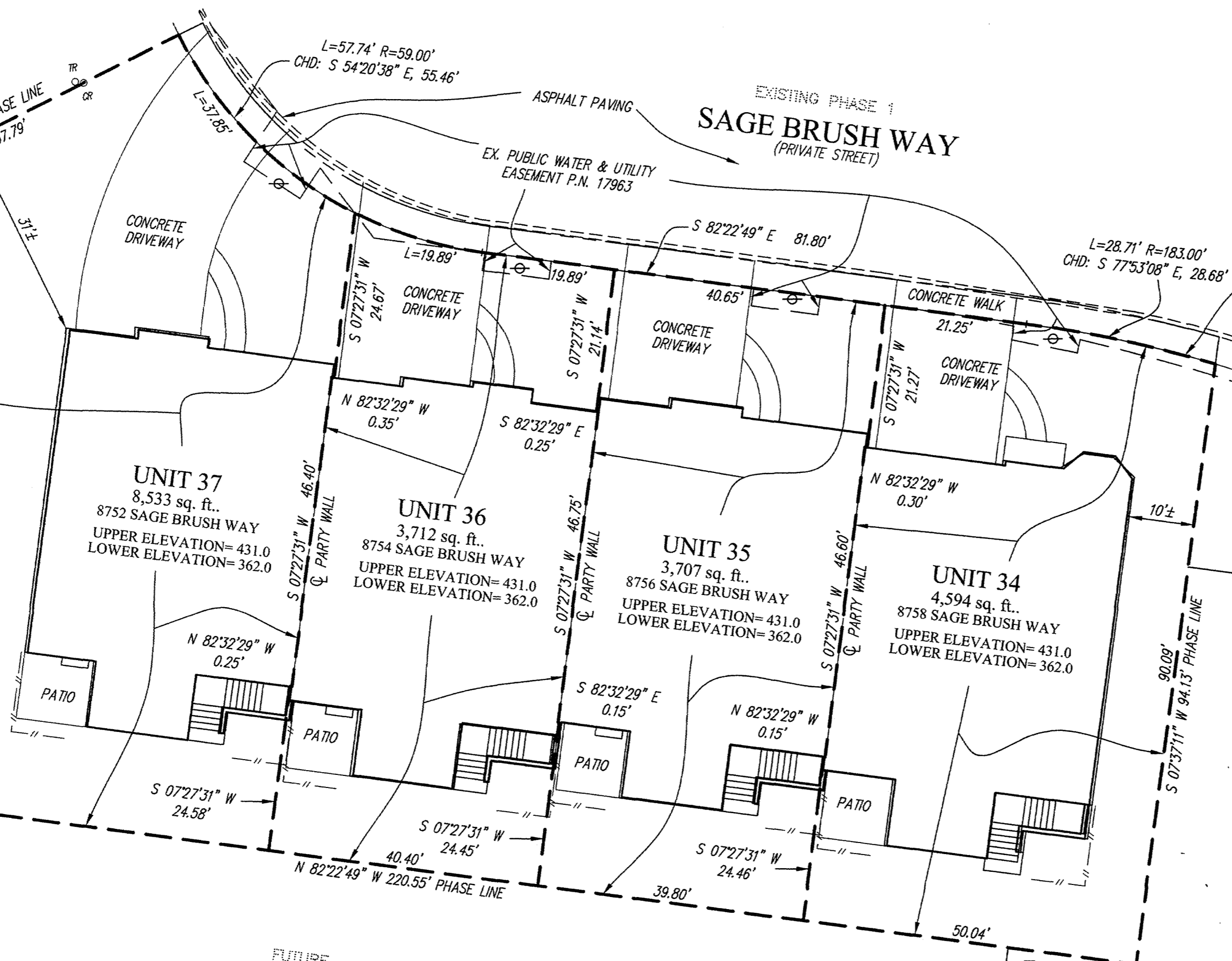
EX. PUBLIC WATER & UTILITY
 EASEMENT P.N. 17963

L=28.71' R=183.00'
 CHD: S 77°53'08" E, 28.68'

NOTE:
 LIMIT OF UNIT
 COINCIDES WITH APPROXIMATE
 BACK OF CONCRETE WALK



PLAT FEE-A
 PLAT RECORDING
 TOTAL
 Res# H083 RCF# 7
 MDR SLC BIK # 2
 Apr 16 2009 11:50 AM



TYPICAL BUILDING SECTION
 NO SCALE

MDR PLAT NO. 20526
 RECORDED
 APR 16 2009

[Signature]
 4/16/09

CONDOMINIUM PLAT
 PHASE 15 - UNIT PLAN
 THE VILLAS AT SNOWDEN
 OVERLOOK CONDOMINIUM II

GUILFORD ELECTION DISTRICT NO. 6
 HOWARD COUNTY, MARYLAND
 SCALE: 1"=15' MARCH 2009 SHEET 2 OF 2

GLW GUTSCHICK LITTLE & WEBER, P.A.
 CIVIL ENGINEERS, LAND SURVEYORS, LAND PLANNERS, LANDSCAPE ARCHITECTS
 3909 NATIONAL DRIVE - SUITE 250 - BURTONSVILLE OFFICE PARK
 BURTONSVILLE, MARYLAND 20866
 TEL: 301-421-4024 BAL: 410-880-1820 DC/VA: 301-989-2524 FAX: 301-421-4186

DRAWN BY: *PWC* CHKD. BY: *TSJ* G.L.W. FILE NO. 06-070

- LEGEND
- FIRE HYDRANT
 - WATER VALVE
 - STORM DRAIN MANHOLE
 - STORM DRAIN INLET
 - CLEAN OUT
 - LIGHT POLE
 - CONCRETE CURB
 - SEWER MANHOLE
 - CABLE RISER
 - TELEPHONE RISER
 - YARD INLET
 - FENCE

RECORDED: _____
 PLAT NO.: _____

DATE OF LATEST FIELD WORK: MARCH 5, 2009

Maryland State Archives

P162301 MSA CSU 2125 44552

HOWARD COUNTY RECORDERS (Plat Book) MDR 80558-20629 MSA C2125-4455 Date available 2009/04/16. Printed 10/13/2017. PLOTTED: 3/12/2009 9:15 AM. LAST SAVED: 3/12/2009 9:14 AM. PLOTTED BY: Paul Clark