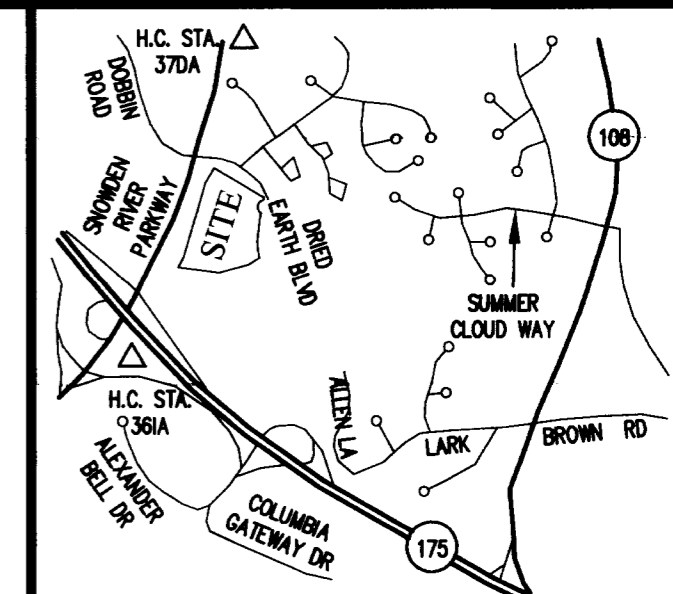
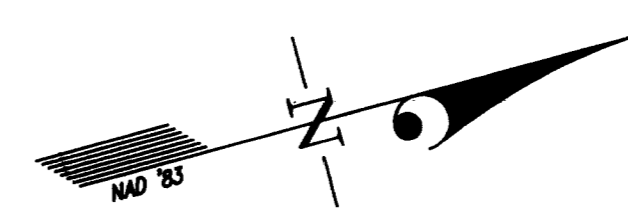


SNOWDEN RIVER PARKWAY



VICINITY MAP  
SCALE: 1"=2000'

OPEN SPACE LOT 7  
SNOWDEN RIVER BUSINESS PARK  
P.N. 17962

OWNER'S DEDICATION

U.S. HOME CORPORATION, A DELAWARE CORPORATION, SUCCESSOR BY MERGER TO PATRIOT HOMES, INC., BY ROBERT JACOBY, DIVISION PRESIDENT, OWNER OF THE PROPERTY SHOWN HEREON AND DESCRIBED IN THE SURVEYOR'S CERTIFICATE, HEREBY ADOPTS THIS CONDOMINIUM PLAT.

BY: *Robert Jacoby*  
ROBERT JACOBY, DIVISION PRESIDENT

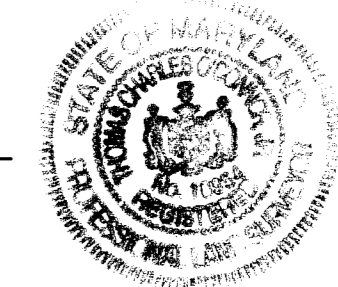
ATTEST: *Diana B. Regan*

PLAT FEE-A  
PLAT RECORDING  
TOTAL  
Rpt # 1082 Rpt # 594  
MDR SLC Blk # 115  
Jan 28, 2009 02:22

SURVEYOR'S CERTIFICATE

I HEREBY CERTIFY TO THE BEST OF MY KNOWLEDGE, INFORMATION AND BELIEF, THAT THIS CONDOMINIUM PLAT, CONSISTING OF TWO (2) SHEETS, IS A CONDOMINIUM PLAT OF PHASE 9 FOR A CONDOMINIUM KNOWN AS "THE VILLAS AT SNOWDEN OVERLOOK CONDOMINIUM II", BEING PART OF PARCEL "A-2" AS SHOWN ON SUBDIVISION PLAT ENTITLED, "REVISION PLAT, COLUMBIA, SNOWDEN RIVER BUSINESS PARK, SECTION 1 AREA 1, PARCEL "A-2 AND OPEN SPACE LOT 7" AND RECORDED AS PLAT NUMBERS 17961-17963, AMONG THE LAND RECORDS OF HOWARD COUNTY, MARYLAND. I FURTHER CERTIFY THAT THE PLAT, TOGETHER WITH THE APPLICABLE WORDING OF THE DECLARATION, IS A CORRECT REPRESENTATION OF THE CONDOMINIUM DESCRIBED; AND THE IDENTIFICATION AND LOCATION OF EACH UNIT AND THE COMMON ELEMENTS, AS CONSTRUCTED, CAN BE DETERMINED FROM THEM.  
THE TOTAL AREA INCLUDED IN PHASE 9 IS 15,139 SQUARE FEET OR 0.3475 OF AN ACRE OF LAND.

*Thomas C. O'Connor, Jr.* 1/26/09  
FOR GUTSCHICK, LITTLE & WEBER, P.A.  
THOMAS C. O'CONNOR, JR.  
PROFESSIONAL LAND SURVEYOR  
MD. REG. NO. 10954



MDR PLAT NO. 20422  
RECORDED JAN 28 2009

1/28/09

CONDOMINIUM PLAT  
PHASE 9  
THE VILLAS AT SNOWDEN  
OVERLOOK CONDOMINIUM II

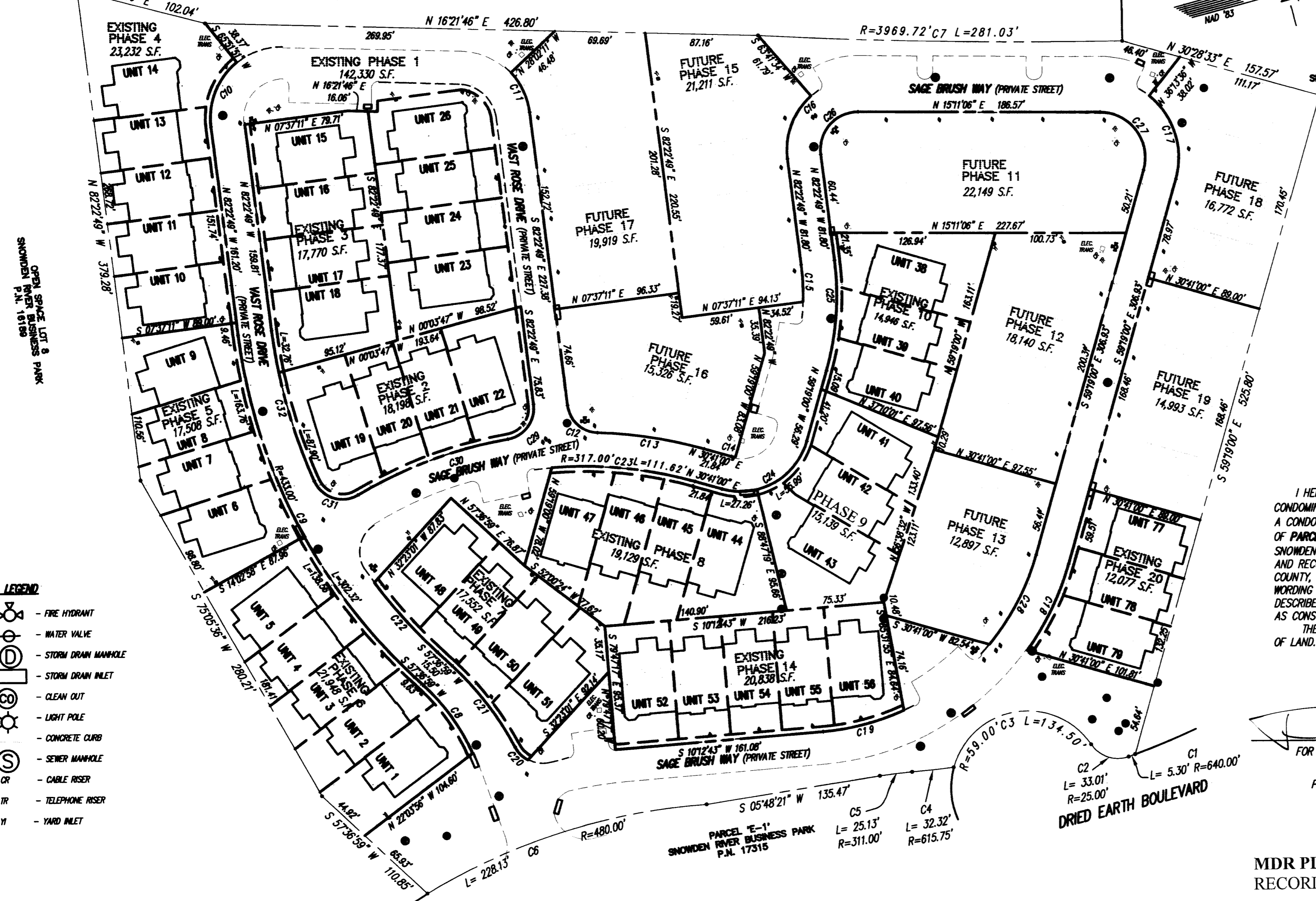
GUILFORD ELECTION DISTRICT NO. 6  
HOWARD COUNTY, MARYLAND  
SCALE: 1"=60' JANUARY 2009

SHEET 1 OF 2

GLW GUTSCHICK LITTLE & WEBER, P.A.  
CIVIL ENGINEERS, LAND SURVEYORS, LAND PLANNERS, LANDSCAPE ARCHITECTS  
3909 NATIONAL DRIVE - SUITE 250 - BURTONSVILLE OFFICE PARK  
BURTONSVILLE, MARYLAND 20866  
TEL: 301-421-4024 BAL: 410-880-1820 DC/VA: 301-989-2524 FAX: 301-421-4186

DRAWN BY: *PLC* CHKD. BY: *TSJ* G.L.W. FILE NO. 06-070

MSA CSU 2125 9406-1  
P159914



- LEGEND
- FIRE HYDRANT
  - WATER VALVE
  - STORM DRAIN MANHOLE
  - STORM DRAIN INLET
  - CLEAN OUT
  - LIGHT POLE
  - CONCRETE CURB
  - SEWER MANHOLE
  - CABLE RISER
  - TELEPHONE RISER
  - YARD INLET

GENERAL NOTES:

1. ALL PORTIONS OF THIS CONDOMINIUM, OTHER THAN THE UNITS, ARE GENERAL COMMON ELEMENTS.
2.  PREVIOUSLY RECORDED PHASES.

| CURVE TABULATION |          |         |         |         |               |            |       |         |         |         |         |               |            |
|------------------|----------|---------|---------|---------|---------------|------------|-------|---------|---------|---------|---------|---------------|------------|
| CURVE            | RADIUS   | LENGTH  | TANGENT | CHORD   | BEARING       | DELTA      | CURVE | RADIUS  | LENGTH  | TANGENT | CHORD   | BEARING       | DELTA      |
| C1               | 640.00'  | 5.30'   | 2.65'   | 5.30'   | S 04°58'06" E | 0°28'27"   | C17   | 61.00'  | 71.24'  | 40.31'  | 67.26'  | S 87°13'42" W | 66°54'37"  |
| C2               | 25.00'   | 33.01'  | 19.41'  | 30.66'  | S 33°05'45" W | 75°39'15"  | C18   | 213.00' | 74.24'  | 37.50'  | 73.86'  | N 49°19'55" W | 19°58'09"  |
| C3               | 58.00'   | 134.50' | 128.32' | 107.21' | S 05°36'57" W | 130°36'50" | C19   | 187.00' | 64.91'  | 32.78'  | 64.58'  | N 00°16'05" E | 19°53'16"  |
| C4               | 615.75'  | 32.32'  | 16.17'  | 32.32'  | S 08°55'51" W | 3°00'28"   | C20   | 24.00'  | 14.39'  | 7.42'   | 14.18'  | N 60°00'21" E | 34°21'40"  |
| C5               | 311.00'  | 25.13'  | 12.57'  | 25.12'  | S 08°07'13" W | 4°37'44"   | C21   | 233.00' | 79.58'  | 40.18'  | 79.20'  | S 67°24'05" W | 19°34'13"  |
| C6               | 480.00'  | 228.13' | 116.26' | 225.98' | S 02°30'25" E | 27°13'53"  | C22   | 407.00' | 72.67'  | 36.43'  | 72.58'  | N 62°43'54" E | 107°35'50" |
| C7               | 3969.72' | 281.03' | 140.57' | 280.97' | N 15°58'12" E | 4°03'22"   | C23   | 317.00' | 111.62' | 56.39'  | 111.05' | S 20°35'46" W | 207°07'29" |
| C8               | 158.00'  | 64.98'  | 32.95'  | 64.52'  | S 69°19'24" W | 23°24'51"  | C24   | 53.00'  | 83.25'  | 53.00'  | 74.95'  | N 14°19'00" W | 90°00'00"  |
| C9               | 433.00'  | 302.32' | 157.61' | 298.21' | S 77°37'05" W | 40°00'12"  | C25   | 213.00' | 85.74'  | 43.46'  | 85.16'  | N 70°50'55" W | 23°03'50"  |
| C10              | 55.00'   | 55.91'  | 30.64'  | 53.53'  | S 53°15'29" E | 58°14'40"  | C26   | 28.00'  | 49.38'  | 33.11'  | 43.63'  | S 33°35'52" E | 97°33'56"  |
| C11              | 55.00'   | 34.23'  | 17.69'  | 33.68'  | S 79°47'30" W | 35°39'21"  | C27   | 35.00'  | 64.45'  | 46.03'  | 55.72'  | S 67°56'03" W | 105°29'54" |
| C12              | 24.00'   | 33.88'  | 20.45'  | 31.13'  | N 57°10'59" E | 80°52'23"  | C28   | 187.00' | 78.22'  | 39.69'  | 77.65'  | N 47°19'59" W | 23°58'01"  |
| C13              | 343.00'  | 83.43'  | 41.92'  | 83.23'  | S 23°42'54" W | 13°56'13"  | C29   | 24.00'  | 36.67'  | 22.99'  | 33.20'  | N 38°36'47" W | 87°32'06"  |
| C14              | 27.00'   | 3.34'   | 1.67'   | 3.34'   | N 27°08'12" E | 7°05'30"   | C30   | 343.00' | 123.85' | 62.60'  | 123.17' | S 05°11'22" E | 20°41'15"  |
| C15              | 187.00'  | 28.71'  | 14.38'  | 28.66'  | N 77°58'57" W | 84°7'46"   | C31   | 24.00'  | 40.28'  | 26.73'  | 35.72'  | N 32°33'01" E | 96°10'01"  |
| C16              | 55.00'   | 53.83'  | 29.29'  | 51.70'  | S 54°20'38" E | 56°04'23"  | C32   | 407.00' | 120.66' | 60.78'  | 120.22' | N 89°07'36" E | 16°58'08"  |

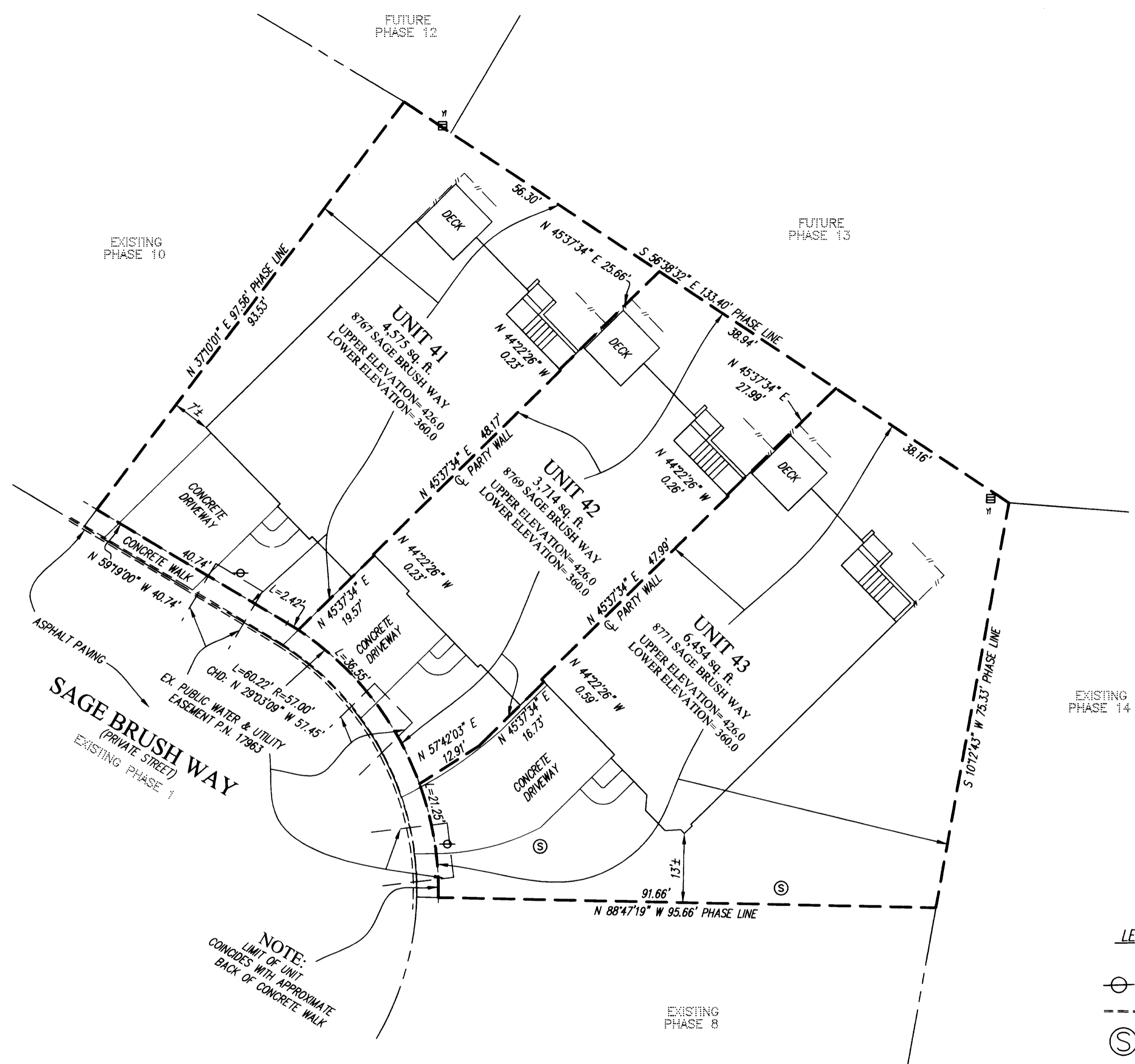
DATE OF LATEST FIELD WORK: JANUARY 23, 2009

RECORDED: \_\_\_\_\_  
PLAT NO.: \_\_\_\_\_

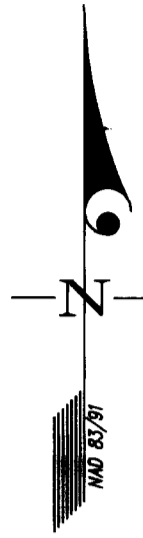
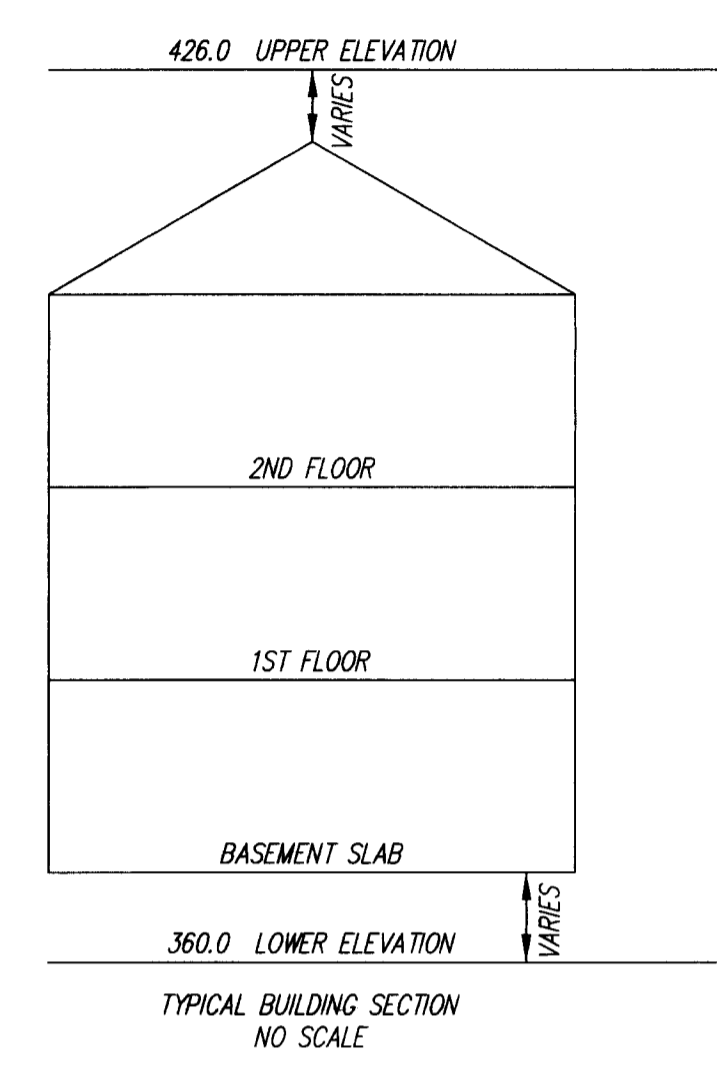
1  
2  
3  
4  
5  
6

HOWARD COUNTY CIRCUIT COURT (Plat Book) Plat MDR 20422-20423, MSA\_C2125\_4406. Date available 2009/01/28. Printed 10/13/2017.

L:\CADD\DRAWINGS\04065\COND\PLATS\06-070 UT PH 9-PL2.dwg 1/28/2009 8:31:52 AM EST



NOTE:  
LIMIT OF UNIT  
COINCIDES WITH APPROXIMATE  
BACK OF CONCRETE WALK



PLAT FEE-A  
PLAT RECORDIN  
TOTAL  
RECORD FEE  
FOR SLC  
Jan 28, 2009

MDR PLAT NO. 20423  
RECORDED  
JAN 28 2009

1/28/09

- LEGEND
- WATER VALVE
  - CONCRETE CURB
  - SEWER MANHOLE
  - CR - CABLE RISER
  - TR - TELEPHONE RISER
  - YI - YARD INLET
  - // - FENCE

CONDOMINIUM PLAT  
PHASE 9 - UNIT PLAN  
THE VILLAS AT SNOWDEN  
OVERLOOK CONDOMINIUM II

GUILFORD ELECTION DISTRICT NO. 6  
HOWARD COUNTY, MARYLAND  
SCALE: 1"=15' JANUARY 2009 SHEET 2 OF 2

**GLW GUTSCHICK LITTLE & WEBER, P.A.**  
CIVIL ENGINEERS, LAND SURVEYORS, LAND PLANNERS, LANDSCAPE ARCHITECTS  
3909 NATIONAL DRIVE - SUITE 250 - BURTONSVILLE OFFICE PARK  
BURTONSVILLE, MARYLAND 20866  
TEL: 301-421-4024 BAL: 410-880-1820 DC/VA: 301-989-2524 FAX: 301-421-4186

DRAWN BY: *PWC* CHKD. BY: *TSJ* G.L.W. FILE NO. 06-070

RECORDED: \_\_\_\_\_  
PLAT NO.: \_\_\_\_\_

DATE OF LATEST FIELD WORK: JANUARY 23, 2009

MSA CSU 2125 4406.2  
P158915