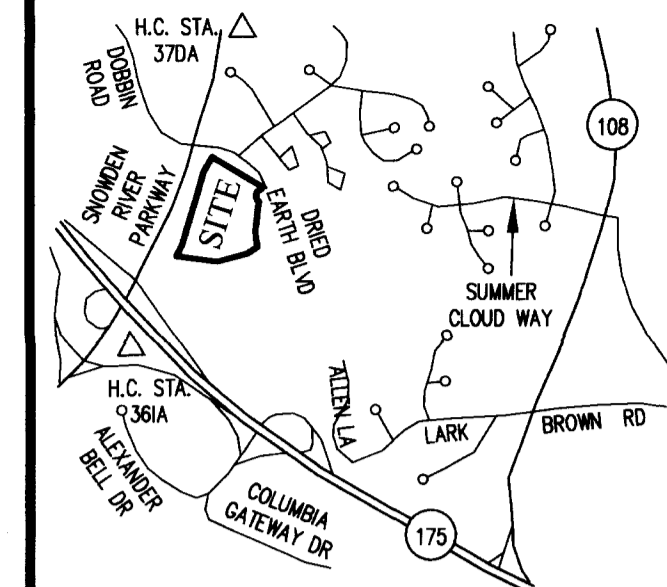
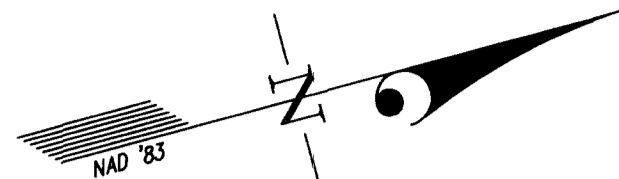


SNOWDEN RIVER PARKWAY



VICINITY MAP  
SCALE: 1"=2000'

OPEN SPACE LOT 7  
SNOWDEN RIVER BUSINESS PARK  
P.N. 17962

OWNER'S DEDICATION

U.S. HOME CORPORATION, A DELAWARE CORPORATION, SUCCESSOR BY MERGER TO PATRIOT HOMES, INC., BY ROBERT JACOBY, DIVISION PRESIDENT, OWNER OF THE PROPERTY SHOWN HEREON AND DESCRIBED IN THE SURVEYOR'S CERTIFICATE, HEREBY ADOPTS THIS CONDOMINIUM PLAT.

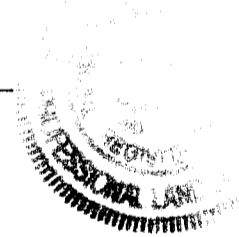
BY: *Robert Jacoby*  
ROBERT JACOBY, DIVISION PRESIDENT  
ATTEST: *Lynne Roper*

PLAT FEE-A 2.  
PLAT RECORDING 2.  
TOTAL 5.  
Rest CH&S Recd: \$ 7561  
MDR SLC Bk: \$ 1152  
Jan 26, 2009 09:45

SURVEYOR'S CERTIFICATE

I HEREBY CERTIFY TO THE BEST OF MY KNOWLEDGE, INFORMATION AND BELIEF, THAT THIS CONDOMINIUM PLAT, CONSISTING OF TWO (2) SHEETS, IS A CONDOMINIUM PLAT OF PHASE 14 FOR A CONDOMINIUM KNOWN AS "THE VILLAS AT SNOWDEN OVERLOOK CONDOMINIUM II", BEING PART OF PARCEL "A-2" AS SHOWN ON SUBDIVISION PLAT ENTITLED, "REVISION PLAT, COLUMBIA, SNOWDEN RIVER BUSINESS PARK, SECTION 1 AREA 1, PARCEL "A-2 AND OPEN SPACE LOT 7" AND RECORDED AS PLAT NUMBERS 17961-17963, AMONG THE LAND RECORDS OF HOWARD COUNTY, MARYLAND. I FURTHER CERTIFY THAT THE PLAT, TOGETHER WITH THE APPLICABLE WORDING OF THE DECLARATION, IS A CORRECT REPRESENTATION OF THE CONDOMINIUM DESCRIBED; AND THE IDENTIFICATION AND LOCATION OF EACH UNIT AND THE COMMON ELEMENTS, AS CONSTRUCTED, CAN BE DETERMINED FROM THEM.  
THE TOTAL AREA INCLUDED IN PHASE 14 IS 20,838 SQUARE FEET OR 0.4784 OF AN ACRE OF LAND.

*Thomas C. O'Connor, Jr.* 1/9/09  
FOR GUTSCHICK, LITTLE & WEBER, P.A.  
THOMAS C. O'CONNOR, JR.  
PROFESSIONAL LAND SURVEYOR  
MD. REG. NO. 10954



MDR PLAT NO. 20418  
RECORDED  
JAN 20 2009

CONDOMINIUM PLAT  
PHASE 14  
THE VILLAS AT SNOWDEN  
OVERLOOK CONDOMINIUM II

GUILFORD ELECTION DISTRICT NO. 6  
HOWARD COUNTY, MARYLAND  
SCALE: 1"=60' JANUARY 2009 SHEET 1 OF 2

**GLW GUTSCHICK LITTLE & WEBER, P.A.**  
CIVIL ENGINEERS, LAND SURVEYORS, LAND PLANNERS, LANDSCAPE ARCHITECTS  
3909 NATIONAL DRIVE - SUITE 250 - BURTONSVILLE OFFICE PARK  
BURTONSVILLE, MARYLAND 20866  
TEL: 301-421-4024 BAL: 410-880-1820 DC/VA: 301-989-2524 FAX: 301-421-4186

DRAWN BY: *PNC* CHKD. BY: *DT* G.L.W. FILE NO. 06-070

*MSA CSU 2125 4404-1  
P159910*



- LEGEND
- FIRE HYDRANT
  - WATER VALVE
  - STORM DRAIN MANHOLE
  - STORM DRAIN INLET
  - CLEAN OUT
  - LIGHT POLE
  - CONCRETE CURB
  - SEWER MANHOLE
  - CABLE RISER
  - TELEPHONE RISER
  - YARD INLET

GENERAL NOTES:

- ALL PORTIONS OF THIS CONDOMINIUM, OTHER THAN THE UNITS, ARE GENERAL COMMON ELEMENTS.
- PREVIOUSLY RECORDED PHASES.

DATE OF LATEST FIELD WORK: DECEMBER 31, 2009

RECORDED: \_\_\_\_\_  
PLAT NO.: \_\_\_\_\_

CURVE TABULATION													
CURVE	RADIUS	LENGTH	TANGENT	CHORD	BEARING	DELTA	CURVE	RADIUS	LENGTH	TANGENT	CHORD	BEARING	DELTA
C1	640.00'	5.30'	2.65'	5.30'	S 04°58'06" E	0°28'27"	C17	61.00'	71.24'	40.31'	67.26'	S 87°13'42" W	66°54'37"
C2	25.00'	33.01'	19.41'	30.66'	S 33°05'45" W	75°39'15"	C18	213.00'	74.24'	37.50'	73.86'	N 49°19'55" E	19°58'09"
C3	59.00'	134.50'	128.32'	107.21'	S 05°36'57" W	130°36'50"	C19	187.00'	64.91'	32.78'	64.58'	N 00°16'05" E	19°53'16"
C4	615.75'	32.32'	16.17'	32.32'	S 08°55'51" W	3°00'28"	C20	24.00'	14.39'	7.42'	14.18'	N 60°00'21" E	34°21'40"
C5	311.00'	25.13'	12.57'	25.12'	S 08°07'13" W	4°37'44"	C21	233.00'	78.58'	40.18'	79.20'	S 67°24'05" E	19°34'13"
C6	480.00'	228.13'	116.26'	225.99'	S 02°30'25" E	27°13'53"	C22	407.00'	72.67'	36.43'	72.58'	N 62°43'54" E	10°13'50"
C7	3969.72'	281.03'	140.57'	280.97'	N 15°58'12" E	4°03'22"	C23	317.00'	111.62'	56.39'	111.05'	S 20°35'46" W	20°10'29"
C8	159.00'	64.98'	32.95'	64.52'	S 69°19'24" W	23°24'51"	C24	53.00'	83.25'	53.00'	74.95'	N 14°19'00" W	90°00'00"
C9	433.00'	302.32'	157.61'	296.21'	S 77°37'05" W	40°00'12"	C25	213.00'	85.74'	43.46'	85.16'	N 70°50'55" W	23°03'50"
C10	55.00'	55.91'	30.64'	53.53'	S 53°15'29" E	58°14'40"	C26	29.00'	49.38'	33.11'	43.63'	S 33°35'52" E	97°33'56"
C11	55.00'	34.23'	17.69'	33.68'	S 79°47'30" W	35°39'21"	C27	35.00'	64.45'	46.03'	55.72'	S 67°56'03" W	105°29'54"
C12	24.00'	33.88'	20.45'	31.13'	N 57°10'59" E	80°52'23"	C28	187.00'	78.22'	39.69'	77.65'	N 47°19'59" W	23°58'01"
C13	343.00'	83.43'	41.92'	83.23'	S 23°42'54" W	13°56'13"	C29	24.00'	36.67'	22.99'	33.20'	N 38°36'47" W	87°32'06"
C14	27.00'	3.34'	1.67'	3.34'	N 27°08'12" E	7°05'30"	C30	343.00'	123.85'	62.60'	123.17'	S 05°11'22" E	20°41'15"
C15	187.00'	28.71'	14.38'	28.68'	N 77°58'57" W	8°47'46"	C31	24.00'	40.28'	26.73'	35.72'	N 32°33'01" E	96°10'01"
C16	55.00'	53.83'	29.29'	51.70'	S 54°20'38" E	56°04'23"	C32	407.00'	120.86'	60.78'	120.22'	N 89°07'36" E	16°59'09"

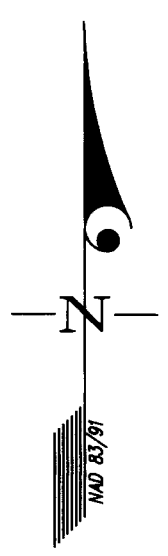
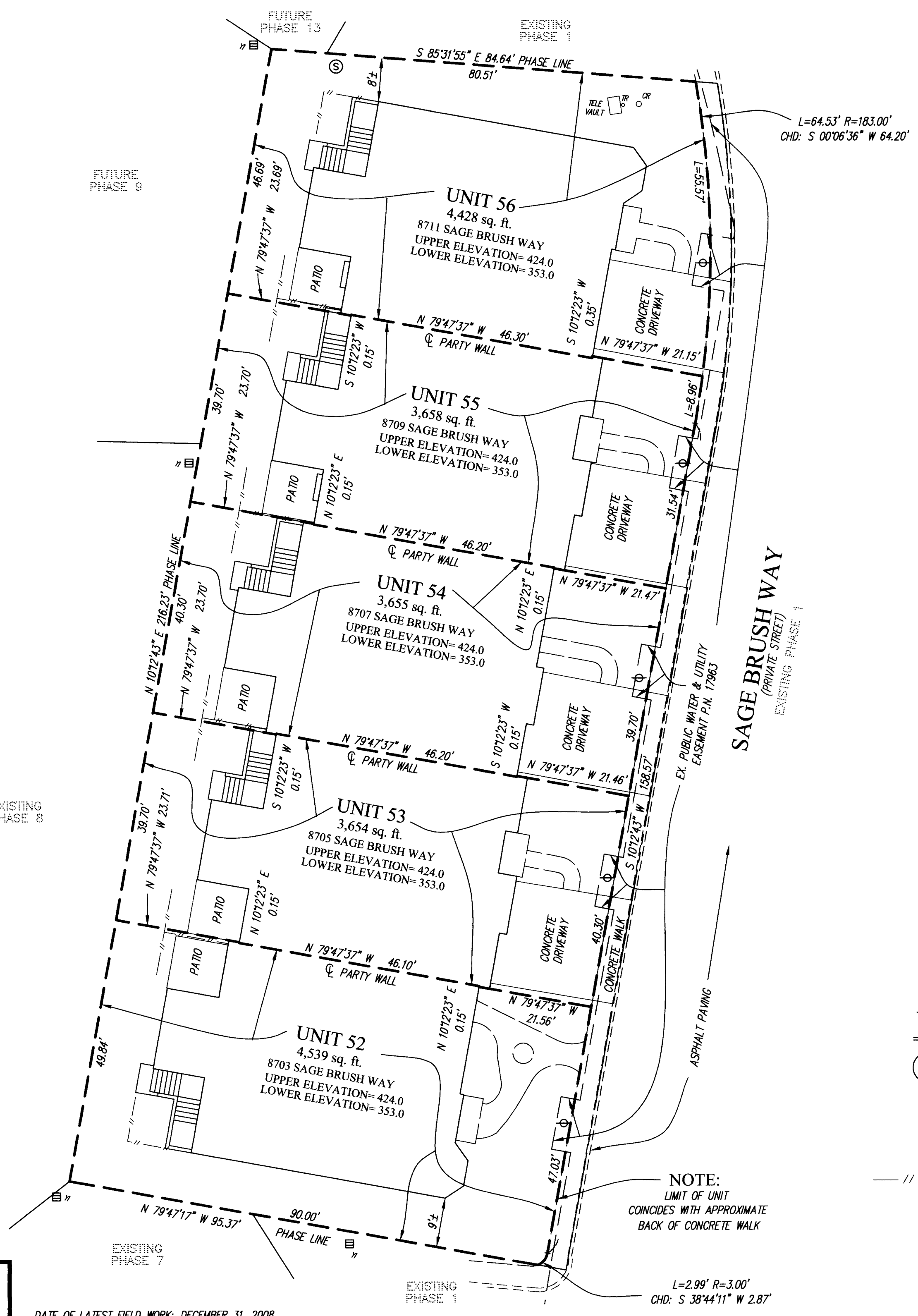
1-20-09



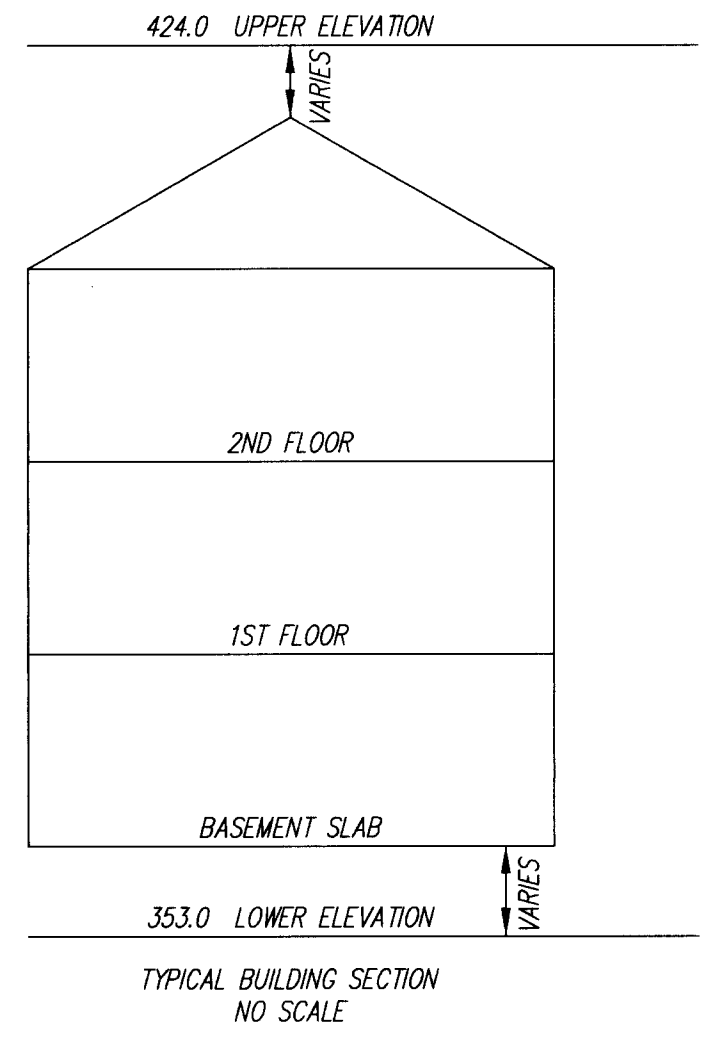
Maryland State Archives  
 1  
 2  
 3  
 4  
 5  
 6

HOWARD COUNTY CIRCUIT COURT (Plat Book) Plat MDR 20418-20419, MSA\_C2125\_4404. Date available 2009/01/20. Printed 10/13/2017.

L:\CADD\DRAWINGS\04065\CONDO\PLATS\06-070 UT PH14-PL2.dwg 1/9/2009 7:30:55 AM EST



PLAT FEE-A  
 PLAT RECORDING  
 TOTAL  
 Recd CHES Rpt # 75  
 MDR SLC Blk # 10  
 Jan 26, 2009 09:4



MDR PLAT NO. 20419  
 RECORDED JAN 20 2009

- LEGEND**
- WATER VALVE
  - CONCRETE CURB
  - SEWER MANHOLE
  - CABLE RISER
  - TELEPHONE RISER
  - YARD INLET
  - FENCE

1-20-09  
 CONDOMINIUM PLAT  
 PHASE 14 - UNIT PLAN  
 THE VILLAS AT SNOWDEN  
 OVERLOOK CONDOMINIUM II

GUILFORD ELECTION DISTRICT NO. 6  
 HOWARD COUNTY, MARYLAND  
 SCALE: 1"=15' JANUARY 2009 SHEET 2 OF 2

**GLW GUTSCHICK LITTLE & WEBER, P.A.**  
 CIVIL ENGINEERS, LAND SURVEYORS, LAND PLANNERS, LANDSCAPE ARCHITECTS  
 3909 NATIONAL DRIVE - SUITE 250 - BURTONSVILLE OFFICE PARK  
 BURTONSVILLE, MARYLAND 20866  
 TEL: 301-421-4024 BAL: 410-880-1820 DC/VA: 301-989-2524 FAX: 301-421-4186

DRAWN BY: PWC CHKD. BY: JY G.L.W. FILE NO. 06-070

RECORDED: \_\_\_\_\_  
 PLAT NO.: \_\_\_\_\_

DATE OF LATEST FIELD WORK: DECEMBER 31, 2008

MSA CSM 2125 4404-2  
 P154911