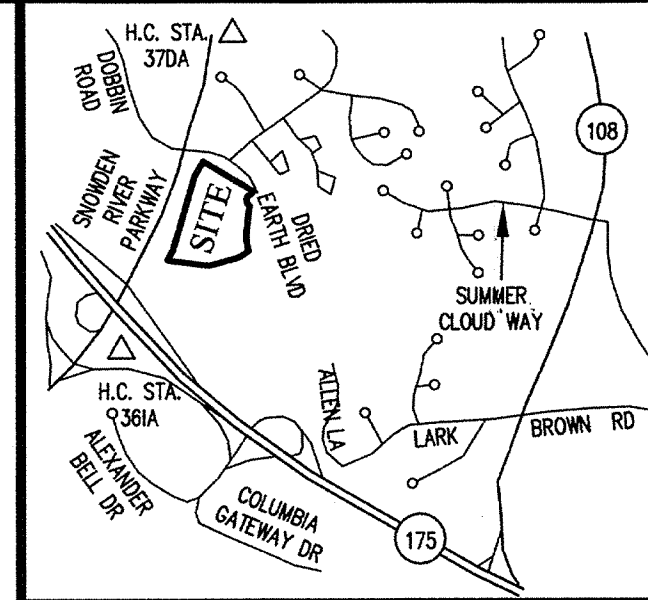
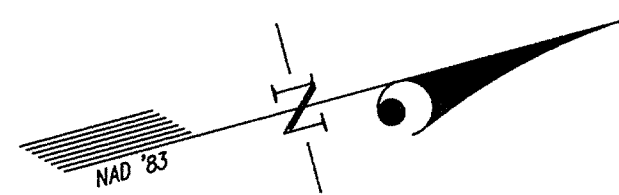


SNOWDEN RIVER PARKWAY



VICINITY MAP
SCALE: 1"=2000'

OPEN SPACE LOT 7
SNOWDEN RIVER BUSINESS PARK
P.N. 17962

OWNER'S DEDICATION

U.S. HOME CORPORATION, A DELAWARE CORPORATION, SUCCESSOR BY MERGER TO PATRIOT HOMES, INC., BY CINDY A. HUNTZBERRY, DIVISION PRESIDENT, OWNER OF THE THE PROPERTY SHOWN HEREON AND DESCRIBED IN THE SURVEYOR'S CERTIFICATE, HEREBY ADOPTS THIS CONDOMINIUM PLAT.

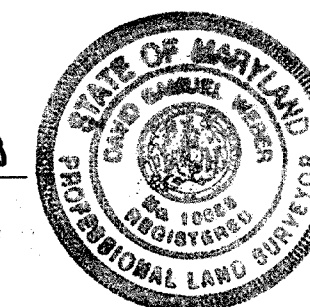
BY: John R. White
CINDY A. HUNTZBERRY, DIVISION PRESIDENT
John R. White
ATTEST: David S. Weber

PLAT FEE-A
PLAT RECORDEE
TOTAL
REPT # 3399
RPT # 543
AUG 12, 2008 10:39

SURVEYOR'S CERTIFICATE

I HEREBY CERTIFY TO THE BEST OF MY KNOWLEDGE, INFORMATION AND BELIEF, THAT THIS CONDOMINIUM PLAT, CONSISTING OF TWO (2) SHEETS, IS A CONDOMINIUM PLAT OF PHASE 20 FOR A CONDOMINIUM KNOWN AS "THE VILLAS AT SNOWDEN OVERLOOK CONDOMINIUM II", BEING PART OF PARCEL "A-2" AS SHOWN ON SUBDIVISION PLAT ENTITLED, "REVISION PLAT, COLUMBIA, SNOWDEN RIVER BUSINESS PARK, SECTION 1 AREA 1, PARCEL "A-2 AND OPEN SPACE LOT 7" AND RECORDED AS PLAT NUMBERS 17961-17963, AMONG THE LAND RECORDS OF HOWARD COUNTY, MARYLAND. I FURTHER CERTIFY THAT THE PLAT, TOGETHER WITH THE APPLICABLE WORDING OF THE DECLARATION, IS A CORRECT REPRESENTATION OF THE CONDOMINIUM DESCRIBED; AND THE IDENTIFICATION AND LOCATION OF EACH UNIT AND THE COMMON ELEMENTS, AS CONSTRUCTED, CAN BE DETERMINED FROM THEM.
THE TOTAL AREA INCLUDED IN PHASE 20 IS 12,077 SQUARE FEET OR 0.2772 OF AN ACRE OF LAND.

David S. Weber 06 AUG 08
FOR GUTSCHICK, LITTLE & WEBER, P.A.
DAVID S. WEBER
PROFESSIONAL LAND SURVEYOR
MD. REG. NO. 10852



David S. Weber
8-12-08

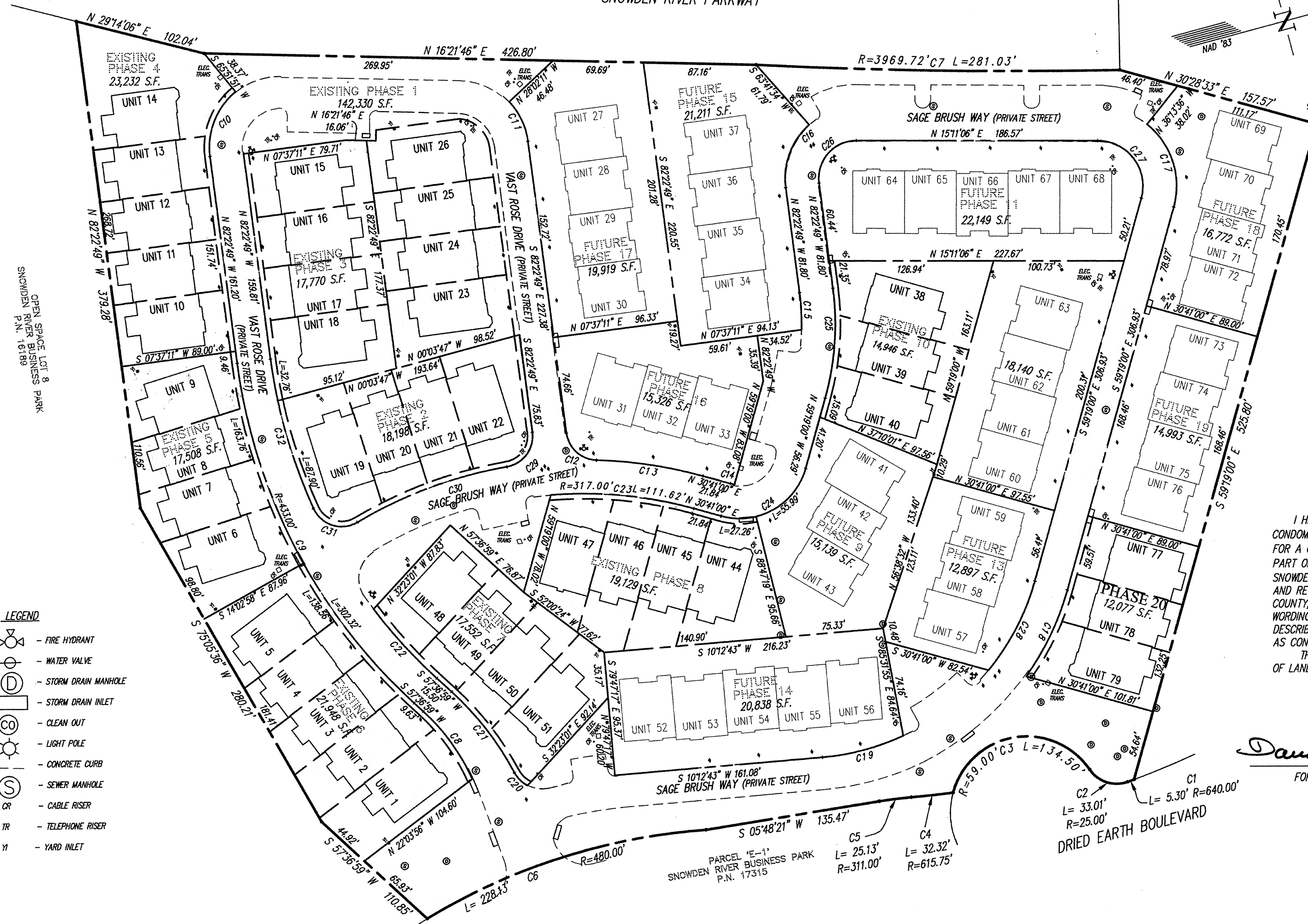
CONDOMINIUM PLAT
PHASE 20
THE VILLAS AT SNOWDEN
OVERLOOK CONDOMINIUM II

GUILFORD ELECTION DISTRICT NO. 6
HOWARD COUNTY, MARYLAND
SCALE: 1"=60' AUGUST 2008 SHEET 1 OF 2

GLW GUTSCHICK LITTLE & WEBER, P.A.
CIVIL ENGINEERS, LAND SURVEYORS, LAND PLANNERS, LANDSCAPE ARCHITECTS
3909 NATIONAL DRIVE - SUITE 250 - BURTONSVILLE OFFICE PARK
BURTONSVILLE, MARYLAND 20866
TEL: 301-421-4024 BAL: 410-880-1820 DC/VA: 301-989-2524 FAX: 301-421-4186

DRAWN BY: PWC CHKD. BY: G.L.W. FILE NO. 06-070

P155602 MSA CSU 2125 4261-1



- LEGEND
- FIRE HYDRANT
 - WATER VALVE
 - STORM DRAIN MANHOLE
 - STORM DRAIN INLET
 - CLEAN OUT
 - LIGHT POLE
 - CONCRETE CURB
 - SEWER MANHOLE
 - CABLE RISER
 - TELEPHONE RISER
 - YARD INLET

GENERAL NOTES:

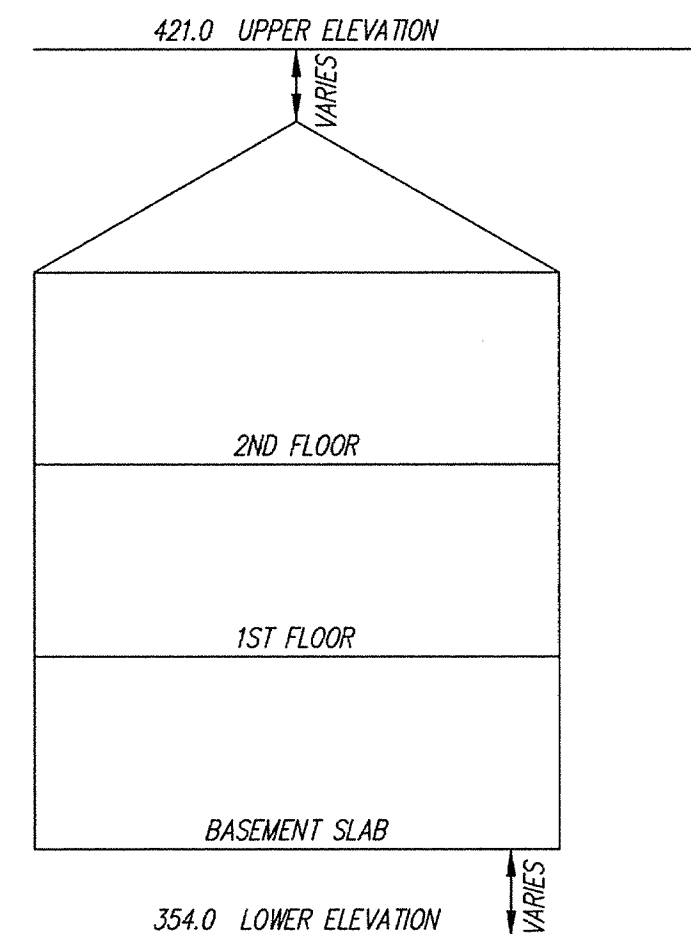
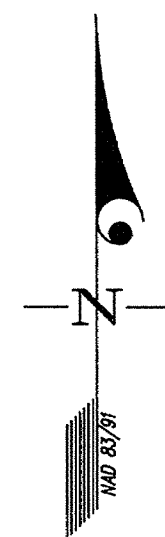
- ALL PORTIONS OF THIS CONDOMINIUM, OTHER THAN THE UNITS, ARE GENERAL COMMON ELEMENTS.
- PREVIOUSLY RECORDED PHASES.

CURVE	RADIUS	LENGTH	TANGENT	CHORD	BEARING	DELTA	CURVE	RADIUS	LENGTH	TANGENT	CHORD	BEARING	DELTA
C1	640.00'	5.30'	2.65'	5.30'	S 04°58'06" E	0°28'27"	C17	61.00'	71.24'	40.31'	67.26'	S 87°13'42" W	66°54'37"
C2	25.00'	33.01'	19.41'	30.66'	S 33°05'45" W	75°39'15"	C18	213.00'	74.24'	37.50'	73.86'	N 49°19'55" W	19°58'09"
C3	59.00'	134.50'	128.32'	107.21'	S 05°36'57" W	130°36'50"	C19	187.00'	64.91'	32.78'	64.58'	N 00°16'05" E	19°53'16"
C4	615.75'	32.32'	16.17'	32.32'	S 08°55'51" W	3°00'28"	C20	24.00'	14.39'	7.42'	14.18'	N 60°00'21" E	34°21'40"
C5	311.00'	25.13'	12.57'	25.12'	S 08°07'13" W	4°37'44"	C21	233.00'	79.58'	40.18'	79.20'	S 67°24'05" W	19°34'13"
C6	480.00'	228.13'	116.26'	225.99'	S 02°30'25" E	271°3'53"	C22	407.00'	72.67'	36.43'	72.58'	N 62°43'54" E	101°13'50"
C7	3969.72'	281.03'	140.57'	280.97'	N 15°58'12" E	4°03'22"	C23	317.00'	111.62'	56.39'	111.05'	S 20°35'46" W	20°10'29"
C8	159.00'	64.98'	32.95'	64.52'	S 69°19'24" W	23°24'51"	C24	53.00'	83.25'	53.00'	74.95'	N 14°19'00" W	90°00'00"
C9	433.00'	302.32'	157.61'	296.21'	S 77°37'05" W	40°00'12"	C25	213.00'	85.74'	43.46'	85.16'	N 70°50'55" W	23°03'50"
C10	55.00'	55.91'	30.64'	53.53'	S 53°15'29" E	58°14'40"	C26	29.00'	49.38'	33.11'	43.63'	S 33°35'52" E	97°33'56"
C11	55.00'	34.23'	17.69'	33.68'	S 79°47'30" W	35°39'21"	C27	35.00'	64.45'	46.03'	55.72'	S 67°56'03" W	105°29'54"
C12	24.00'	33.88'	20.45'	31.13'	N 57°10'59" E	80°52'23"	C28	187.00'	78.22'	39.69'	77.65'	N 47°19'59" W	23°58'01"
C13	343.00'	83.43'	41.92'	83.23'	S 23°42'54" W	13°56'13"	C29	24.00'	36.67'	22.99'	33.20'	N 38°36'47" W	87°32'06"
C14	27.00'	3.34'	1.67'	3.34'	N 27°08'12" E	7°05'30"	C30	343.00'	123.85'	62.60'	123.17'	S 05°11'22" E	20°41'15"
C15	187.00'	28.71'	14.38'	28.68'	N 77°58'57" W	8°47'46"	C31	24.00'	40.28'	26.73'	35.72'	N 32°33'01" E	96°10'01"
C16	55.00'	53.83'	29.29'	51.70'	S 54°20'38" E	56°04'23"	C32	407.00'	120.66'	60.78'	120.22'	N 89°07'36" E	16°59'09"

DATE OF LATEST FIELD WORK: AUGUST 4, 2008

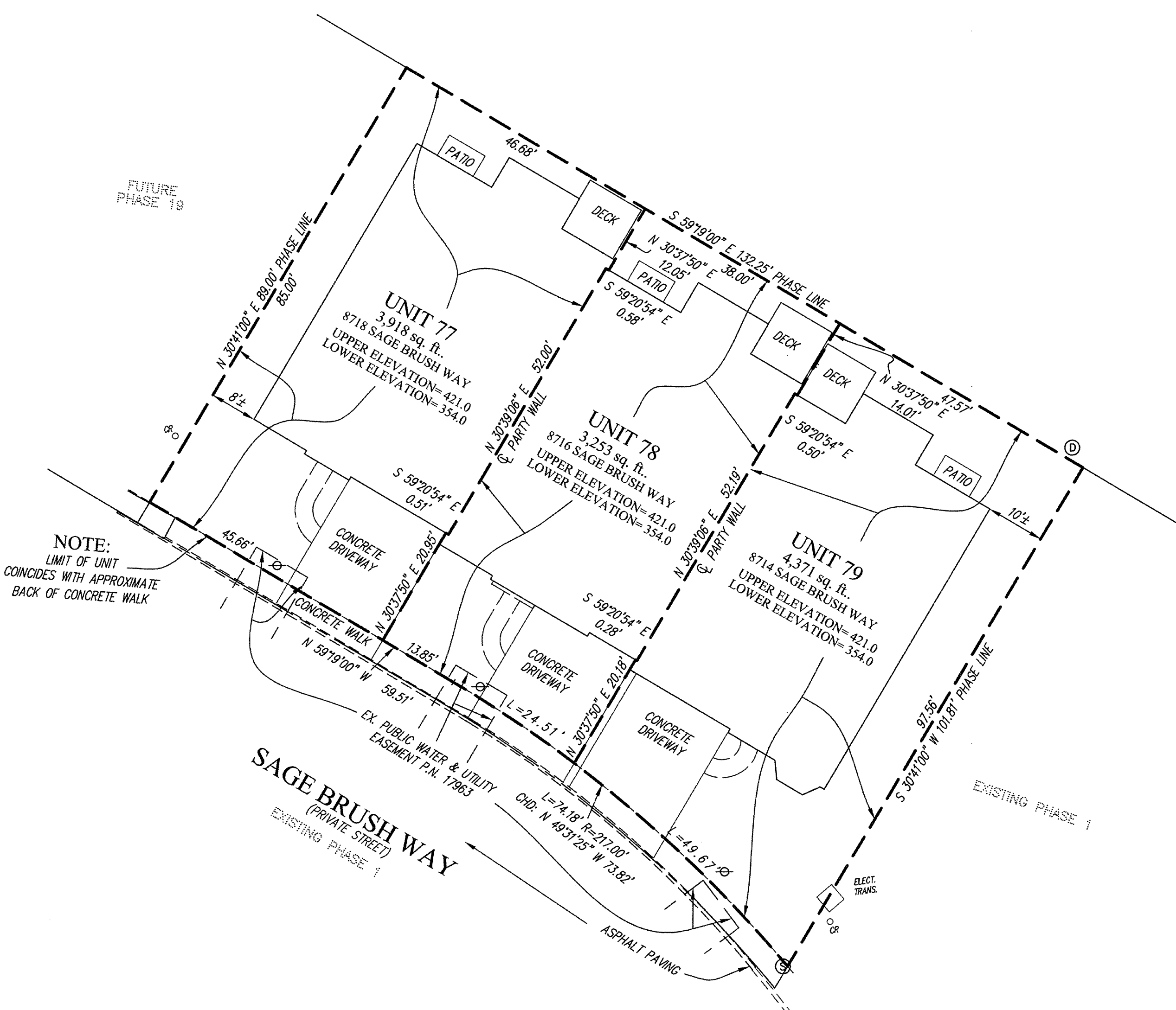
MDR PLAT NO. 20082
RECEIVED AUG 12 2008
FOR RECORD

HOWARD COUNTY CIRCUIT COURT (Plat Book) Plat MDR 20082-20083, MSA C2125 4261. Date available 2008/08/12. Printed 10/13/2017.



TYPICAL BUILDING SECTION
NO SCALE

PLAT FEE-A
PLAT RECORDED
TOTAL
Res# CH06 Rec# # 39
MDR HEN Blk # 54
Aug 12, 2008 10:4



NOTE:
LIMIT OF UNIT
COINCIDES WITH APPROXIMATE
BACK OF CONCRETE WALK

LEGEND

- WATER VALVE
- STORM DRAIN MANHOLE
- STORM DRAIN INLET
- CONCRETE CURB
- SEWER MANHOLE
- FENCE

8-12-08

CONDOMINIUM PLAT
PHASE 20 - UNIT PLAN
THE VILLAS AT SNOWDEN
OVERLOOK CONDOMINIUM II

GUILFORD ELECTION DISTRICT NO. 6
HOWARD COUNTY, MARYLAND
SCALE: 1"=15' AUGUST 2008

SHEET 2 OF 2

GLW GUTSCHICK LITTLE & WEBER, P.A.
 CIVIL ENGINEERS, LAND SURVEYORS, LAND PLANNERS, LANDSCAPE ARCHITECTS
 3909 NATIONAL DRIVE - SUITE 250 - BURTONSVILLE OFFICE PARK
 BURTONSVILLE, MARYLAND 20866
 TEL: 301-421-4024 BAL: 410-880-1820 DC/VA: 301-989-2524 FAX: 301-421-4186

DRAWN BY: *PWL* CHKD. BY: G.L.W. FILE NO. 06-070

MDR PLAT NO. 20083
RECEIVED AUG 12 2008
FOR RECORD

DATE OF LATEST FIELD WORK: AUGUST 4, 2008

P155663

MSA CSN 2125 4261-2

HOWARD COUNTY CIRCUIT COURT (Plat Book) Plat MDR 20082-20083, MSA, C2125 4261 Date available 2008/08/12. Printed 10/13/2017.

Maryland State Archives
1
2
3
4
5
6