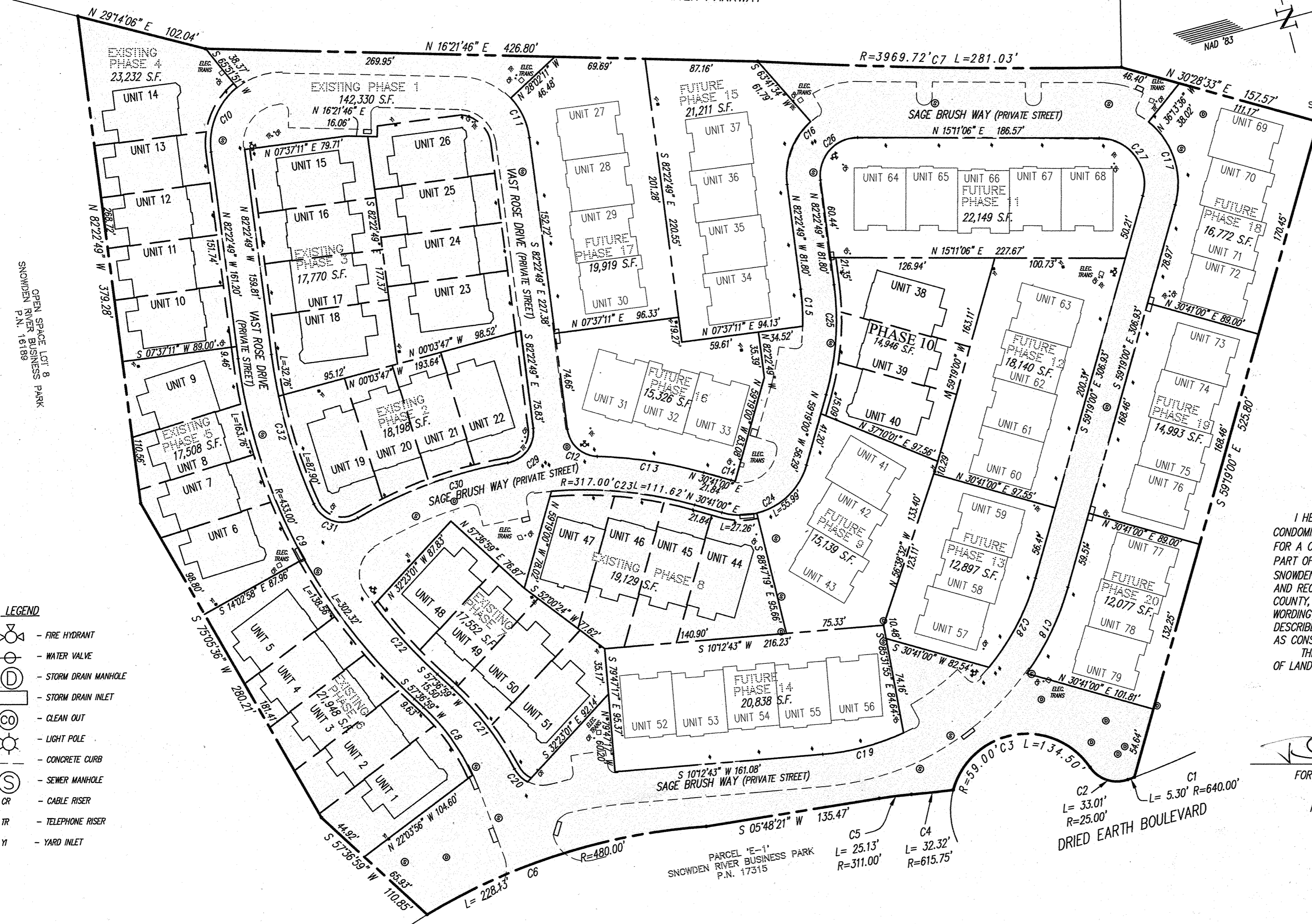
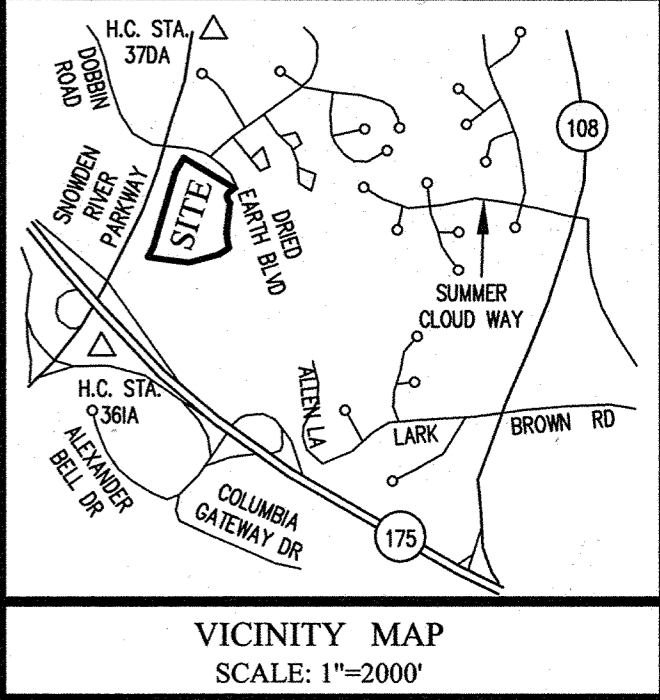
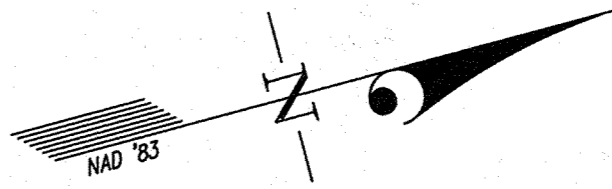


1  
2  
3  
4  
5  
6

Maryland State Archives

SNOWDEN RIVER PARKWAY



- LEGEND**
- FIRE HYDRANT
  - WATER VALVE
  - STORM DRAIN MANHOLE
  - STORM DRAIN INLET
  - CLEAN OUT
  - LIGHT POLE
  - CONCRETE CURB
  - SEWER MANHOLE
  - CABLE RISER
  - TELEPHONE RISER
  - YARD INLET

**OWNER'S DEDICATION**  
 U.S. HOME CORPORATION, A DELAWARE CORPORATION, SUCCESSOR BY MERGER TO PATRIOT HOMES, INC., BY CINDY A. HUNTZBERRY, DIVISION PRESIDENT, OWNER OF THE PROPERTY SHOWN HEREON AND DESCRIBED IN THE SURVEYOR'S CERTIFICATE, HEREBY ADOPTS THIS CONDOMINIUM PLAT.

BY: *Cindy A. Huntzberry*  
 CINDY A. HUNTZBERRY, DIVISION PRESIDENT

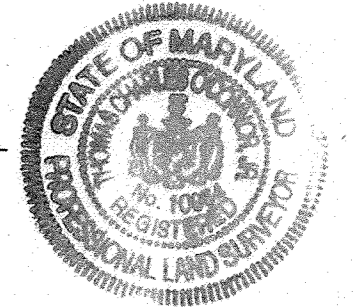
ATTEST: *[Signature]*

PLAT FEE-A  
 PLAT RECORDON  
 TOTAL  
 Recd CHRG Recpt # 3945  
 HDR MEN Blk # 568  
 Jul 14 2008 01:46

**SURVEYOR'S CERTIFICATE**

I HEREBY CERTIFY TO THE BEST OF MY KNOWLEDGE, INFORMATION AND BELIEF, THAT THIS CONDOMINIUM PLAT, CONSISTING OF TWO (2) SHEETS, IS A CONDOMINIUM PLAT OF PHASE 10 FOR A CONDOMINIUM KNOWN AS "THE VILLAS AT SNOWDEN OVERLOOK CONDOMINIUM II", BEING PART OF PARCEL "A-2" AS SHOWN ON SUBDIVISION PLAT ENTITLED, "REVISION PLAT, COLUMBIA, SNOWDEN RIVER BUSINESS PARK, SECTION 1 AREA 1, PARCEL "A-2 AND OPEN SPACE LOT 7" AND RECORDED AS PLAT NUMBERS 17961-17963, AMONG THE LAND RECORDS OF HOWARD COUNTY, MARYLAND. I FURTHER CERTIFY THAT THE PLAT, TOGETHER WITH THE APPLICABLE WORDING OF THE DECLARATION, IS A CORRECT REPRESENTATION OF THE CONDOMINIUM DESCRIBED; AND THE IDENTIFICATION AND LOCATION OF EACH UNIT AND THE COMMON ELEMENTS AS CONSTRUCTED, CAN BE DETERMINED FROM THEM.  
 THE TOTAL AREA INCLUDED IN PHASE 10 IS 14,946 SQUARE FEET OR 0.3431 OF AN ACRE OF LAND.

*[Signature]* 7/14/08  
 FOR GUTSCHICK, LITTLE & WEBER, P.A.  
 THOMAS C. O'CONNOR, JR.  
 PROFESSIONAL LAND SURVEYOR  
 MD. REG. NO. 10954



**GENERAL NOTES:**

1. ALL PORTIONS OF THIS CONDOMINIUM, OTHER THAN THE UNITS, ARE GENERAL COMMON ELEMENTS.
2. PREVIOUSLY RECORDED PHASES.

**CURVE TABULATION**

CURVE	RADIUS	LENGTH	TANGENT	CHORD	BEARING	DELTA	CURVE	RADIUS	LENGTH	TANGENT	CHORD	BEARING	DELTA
C1	640.00'	5.30'	2.65'	5.30'	S 04°58'06" E	0°28'27"	C17	61.00'	71.24'	40.31'	67.26'	S 87°13'42" W	66°54'37"
C2	25.00'	33.01'	19.41'	30.66'	S 33°05'45" W	75°39'15"	C18	213.00'	74.24'	37.50'	73.86'	N 49°19'55" W	19°58'09"
C3	59.00'	134.50'	128.32'	107.21'	S 05°36'57" W	130°36'50"	C19	187.00'	64.91'	32.78'	64.58'	N 00°16'05" E	19°53'16"
C4	615.75'	32.32'	16.17'	32.32'	S 08°55'51" W	3°00'28"	C20	24.00'	14.39'	7.42'	14.18'	N 60°00'21" E	34°21'40"
C5	311.00'	25.13'	12.57'	25.12'	S 08°07'13" W	4°37'44"	C21	233.00'	79.58'	40.18'	79.20'	S 67°24'05" W	19°34'13"
C6	480.00'	228.13'	116.26'	225.99'	S 02°30'25" E	27°13'53"	C22	407.00'	72.67'	36.43'	72.58'	N 62°43'54" E	10°13'50"
C7	3969.72'	281.03'	140.57'	280.97'	N 15°58'12" E	4°03'22"	C23	317.00'	111.62'	56.39'	111.05'	S 20°35'46" W	20°10'29"
C8	159.00'	64.98'	32.95'	64.52'	S 69°19'24" W	23°24'51"	C24	53.00'	83.25'	53.00'	74.95'	N 14°19'00" W	90°00'00"
C9	433.00'	302.32'	157.61'	286.21'	S 77°37'05" W	40°00'12"	C25	213.00'	85.74'	43.46'	85.16'	N 70°50'55" W	23°03'50"
C10	55.00'	55.91'	30.64'	53.53'	S 53°15'29" E	58°14'40"	C26	29.00'	49.38'	33.11'	43.63'	S 33°35'52" E	97°33'56"
C11	55.00'	34.23'	17.69'	33.68'	S 79°47'30" W	35°39'21"	C27	35.00'	64.45'	46.03'	55.72'	S 67°56'03" W	105°29'54"
C12	24.00'	33.88'	20.45'	31.13'	N 57°10'59" E	80°52'23"	C28	187.00'	78.22'	39.69'	77.65'	N 47°19'59" W	23°58'01"
C13	343.00'	83.43'	41.92'	83.23'	S 23°42'54" W	13°56'13"	C29	24.00'	36.67'	22.99'	33.20'	N 38°36'47" W	87°32'06"
C14	27.00'	3.34'	1.67'	3.34'	N 27°08'12" E	7°05'30"	C30	343.00'	123.85'	62.60'	123.17'	S 05°11'22" E	20°41'15"
C15	187.00'	28.71'	14.38'	28.68'	N 77°58'57" W	8°47'46"	C31	24.00'	40.28'	26.73'	35.72'	N 32°33'01" E	96°10'01"
C16	55.00'	53.83'	29.29'	51.70'	S 54°20'38" E	56°04'23"	C32	407.00'	120.66'	60.78'	120.22'	N 89°07'36" E	16°59'09"

DATE OF LATEST FIELD WORK: JUNE 12, 2008

MDR PLAT NO. 20033  
 RECEIVED JUL 14 2008  
 FOR RECORD

**CONDOMINIUM PLAT  
 PHASE 10  
 THE VILLAS AT SNOWDEN  
 OVERLOOK CONDOMINIUM II**

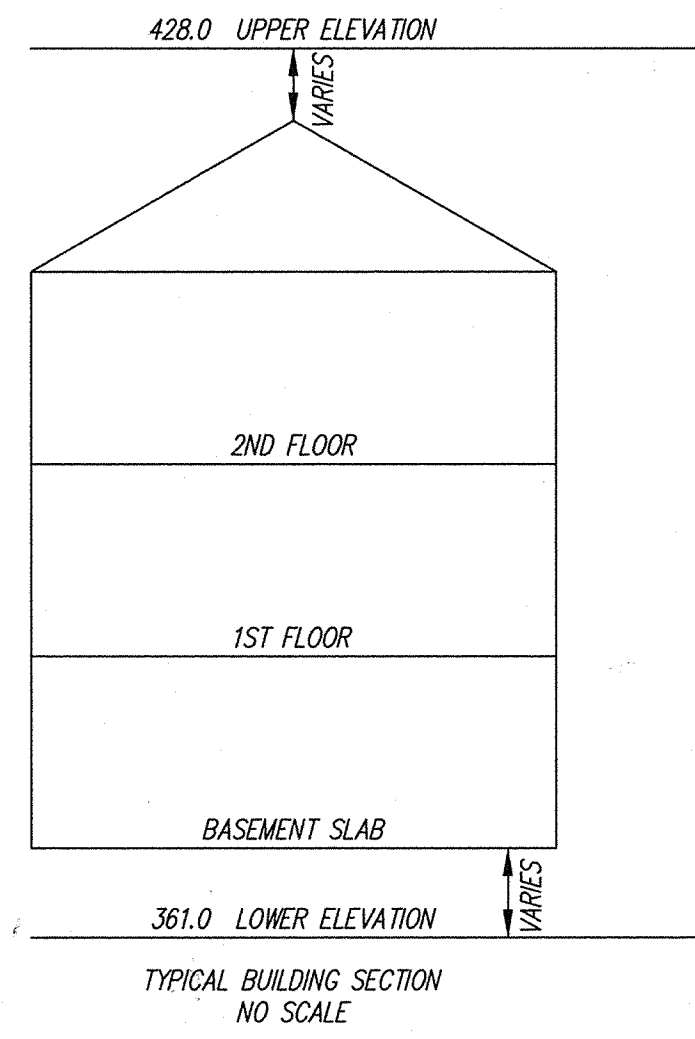
GUILFORD ELECTION DISTRICT NO. 6  
 HOWARD COUNTY, MARYLAND  
 SCALE: 1"=60' JULY 2008 SHEET 1 OF 2

**GLW GUTSCHICK LITTLE & WEBER, P.A.**  
 CIVIL ENGINEERS, LAND SURVEYORS, LAND PLANNERS, LANDSCAPE ARCHITECTS  
 3909 NATIONAL DRIVE - SUITE 250 - BURTONSVILLE OFFICE PARK  
 BURTONSVILLE, MARYLAND 20866  
 TEL: 301-421-4024 BALT: 410-880-1820 DC/VA: 301-989-2524 FAX: 301-421-4186

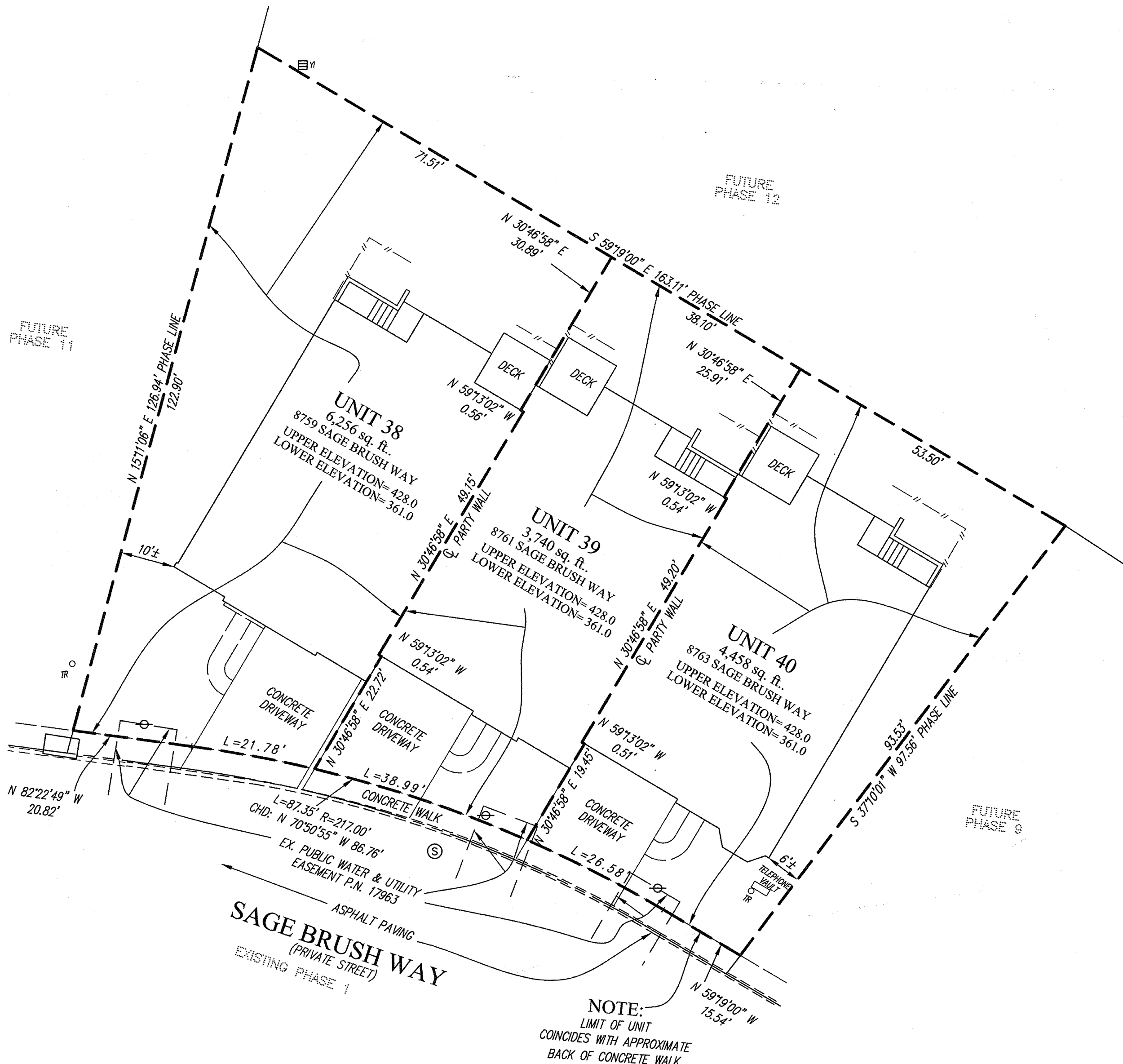
DRAWN BY: *PWC* CHKD. BY: *TR* G.L.W. FILE NO. 06-070

*154 846 MSA CSM 2125 4237-1*

HOWARD COUNTY CIRCUIT COURT (Plat Book) Plat MDR 20033-20034, MSA\_C2125\_4237. Date available 2008/07/14. Printed 10/13/2017.  
 L:\CADD\DRAWINGS\04065\CONDO\PLATS\06-070 CV PH 10.dwg 7/10/2008 10:21:43 AM EST



PLAT FEE-A  
PLAT RECORDING  
TOTAL  
Res# CHOC Rcpt # 394  
HDR HEN BIR # 563  
Jul 14, 2008 8:14:46



NOTE:  
LIMIT OF UNIT  
COINCIDES WITH APPROXIMATE  
BACK OF CONCRETE WALK

LEGEND

- FIRE HYDRANT
- WATER VALVE
- STORM DRAIN MANHOLE
- STORM DRAIN INLET
- CLEAN OUT
- LIGHT POLE
- CONCRETE CURB
- SEWER MANHOLE
- CABLE RISER
- TELEPHONE RISER
- YARD INLET
- FENCE

7-14-08  
CONDOMINIUM PLAT  
PHASE 10 - UNIT PLAN  
THE VILLAS AT SNOWDEN  
OVERLOOK CONDOMINIUM II

GUILFORD ELECTION DISTRICT NO. 6  
HOWARD COUNTY, MARYLAND  
SCALE: 1"=15' JULY 2008

SHEET 2 OF 2

GLW GUTSCHICK LITTLE & WEBER, P.A.

CIVIL ENGINEERS, LAND SURVEYORS, LAND PLANNERS, LANDSCAPE ARCHITECTS  
3909 NATIONAL DRIVE - SUITE 250 - BURTONSVILLE OFFICE PARK  
BURTONSVILLE, MARYLAND 20866  
TEL: 301-421-4024 BALT: 410-880-1820 DC/VA: 301-989-2524 FAX: 301-421-4186

DRAWN BY: PWC CHKD. BY: TBY G.L.W. FILE NO. 06-070

MDR PLAT NO. 20034  
RECEIVED JUL 14 2008  
FOR RECORD

DATE OF LATEST FIELD WORK: JUNE 12, 2008



HOWARD COUNTY RECORDERS OFFICE (P) 410-326-6000 (F) 410-326-6001 (E) REC@HOWARDCOUNTYMD.GOV (W) WWW.HOWARDCOUNTYMD.GOV

P154847 MSA CDU 2125 4237-2