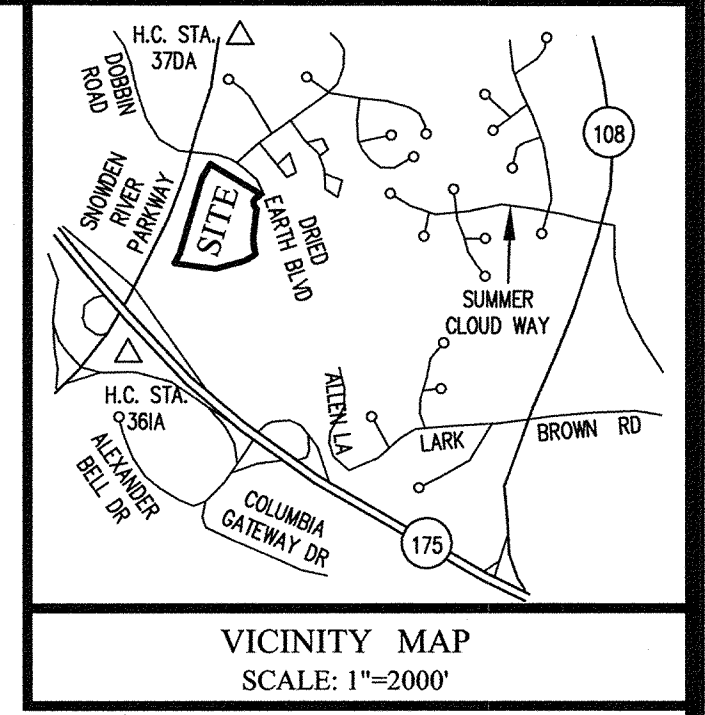
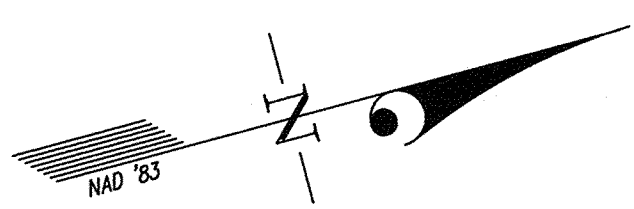


SNOWDEN RIVER PARKWAY



OPEN SPACE LOT 7  
SNOWDEN RIVER BUSINESS PARK  
P.N. 17962

VICINITY MAP  
SCALE: 1"=2000'

OWNER'S DEDICATION

U.S. HOME CORPORATION, A DELAWARE CORPORATION, SUCCESSOR BY MERGER TO PATRIOT HOMES, INC., BY CINDY A. HUNTZBERRY, DIVISION PRESIDENT, OWNER OF THE THE PROPERTY SHOWN HEREON AND DESCRIBED IN THE SURVEYOR'S CERTIFICATE, HEREBY ADOPTS THIS CONDOMINIUM PLAT.

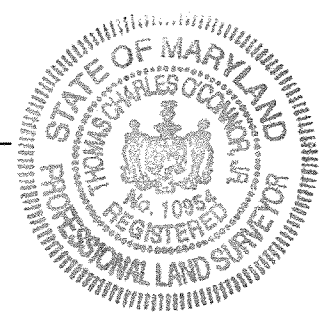
BY: *Cindy A. Huntzberry*  
CINDY A. HUNTZBERRY, DIVISION PRESIDENT

ATTEST: *Thomas C. O'Connor, Jr.*

SURVEYOR'S CERTIFICATE

I HEREBY CERTIFY TO THE BEST OF MY KNOWLEDGE, INFORMATION AND BELIEF, THAT THIS CONDOMINIUM PLAT, CONSISTING OF TWO (2) SHEETS, IS A CONDOMINIUM PLAT OF PHASE 3 FOR A CONDOMINIUM KNOWN AS "THE VILLAS AT SNOWDEN OVERLOOK CONDOMINIUM II", BEING PART OF PARCEL "A-2" AS SHOWN ON SUBDIVISION PLAT ENTITLED, "REVISION PLAT, COLUMBIA, SNOWDEN RIVER BUSINESS PARK, SECTION 1 AREA 1, PARCEL "A-2 AND OPEN SPACE LOT 7" AND RECORDED AS PLAT NUMBERS 17961-17963, AMONG THE LAND RECORDS OF HOWARD COUNTY, MARYLAND. I FURTHER CERTIFY THAT THE PLAT, TOGETHER WITH THE APPLICABLE WORDING OF THE DECLARATION, IS A CORRECT REPRESENTATION OF THE CONDOMINIUM DESCRIBED; AND THE IDENTIFICATION AND LOCATION OF EACH UNIT AND THE COMMON ELEMENTS, AS CONSTRUCTED, CAN BE DETERMINED FROM THEM.  
THE TOTAL AREA INCLUDED IN PHASE 3 IS 17,770 SQUARE FEET OR 0.4079 OF AN ACRE OF LAND.

*Thomas C. O'Connor, Jr.* 1/21/08  
FOR GUTSCHICK, LITTLE & WEBER, P.A.  
THOMAS C. O'CONNOR, JR.  
PROFESSIONAL LAND SURVEYOR  
MD. REG. NO. 10954



MDR PLAT NO. 19685  
RECEIVED JAN 25 2008  
FOR RECORD

PLAT FEE-A  
PLAT RECORDING  
TOTAL  
Rept # CH06 Rept # 3528  
MDR HEN Blk # 1645  
Jan 25, 2008 12:43

GENERAL NOTES:  
1. ALL PORTIONS OF THIS CONDOMINIUM, OTHER THAN THE UNITS, ARE GENERAL COMMON ELEMENTS.  
2. PREVIOUSLY RECORDED PHASES.

CURVE TABULATION

CURVE	RADIUS	LENGTH	TANGENT	CHORD	BEARING	DELTA	CURVE	RADIUS	LENGTH	TANGENT	CHORD	BEARING	DELTA
C1	640.00'	5.30'	2.65'	5.30'	S 04°58'06" E	0°28'27"	C17	61.00'	71.24'	40.31'	67.26'	S 87°13'42" W	66°54'37"
C2	25.00'	33.01'	19.41'	30.66'	S 33°05'45" W	75°39'15"	C18	213.00'	74.24'	37.50'	73.86'	N 49°19'55" W	19°58'09"
C3	58.00'	134.50'	128.32'	107.21'	S 05°36'57" W	130°36'50"	C19	187.00'	64.91'	32.78'	64.58'	N 00°16'05" E	19°53'16"
C4	615.75'	32.32'	16.17'	32.32'	S 08°55'51" W	3°00'28"	C20	24.00'	14.39'	7.42'	14.18'	N 60°00'21" E	34°21'40"
C5	311.00'	25.13'	12.57'	25.12'	S 08°07'13" W	4°37'44"	C21	233.00'	79.58'	40.18'	79.20'	S 67°24'05" W	19°34'13"
C6	480.00'	228.13'	116.26'	225.99'	S 02°30'25" E	271°3'53"	C22	407.00'	72.67'	36.43'	72.58'	N 62°43'54" E	10°13'50"
C7	3969.72'	281.03'	140.57'	280.97'	N 15°58'12" E	4°03'22"	C23	317.00'	111.62'	56.39'	111.05'	S 20°35'46" W	20°10'29"
C8	158.00'	64.98'	32.95'	64.52'	S 69°19'24" W	23°24'51"	C24	53.00'	83.25'	53.00'	74.95'	N 14°19'00" W	90°00'00"
C9	433.00'	302.32'	157.61'	296.21'	S 77°37'05" W	40°00'12"	C25	213.00'	85.74'	43.46'	85.16'	N 70°50'55" W	23°03'50"
C10	55.00'	55.91'	30.84'	53.53'	S 53°15'29" E	58°14'40"	C26	29.00'	49.38'	33.11'	43.63'	S 33°35'52" E	97°33'56"
C11	55.00'	34.23'	17.89'	33.68'	S 79°47'30" W	35°39'21"	C27	35.00'	64.45'	46.03'	55.72'	S 67°56'03" W	105°29'54"
C12	24.00'	33.88'	20.45'	31.13'	N 57°10'59" E	80°52'23"	C28	187.00'	78.22'	39.69'	77.65'	N 47°19'59" W	23°58'01"
C13	343.00'	83.43'	41.92'	83.23'	S 23°42'54" W	13°56'13"	C29	24.00'	36.67'	22.99'	33.20'	N 38°36'47" W	87°32'06"
C14	27.00'	3.34'	1.67'	3.34'	N 27°08'12" E	7°05'30"	C30	343.00'	123.85'	62.60'	123.17'	S 05°11'22" E	20°41'15"
C15	187.00'	28.71'	14.38'	28.68'	N 77°58'57" W	8°47'46"	C31	24.00'	40.28'	26.73'	35.72'	N 32°33'01" E	96°10'01"
C16	55.00'	53.83'	29.29'	51.70'	S 54°20'38" E	56°04'23"	C32	407.00'	120.66'	60.78'	120.22'	N 89°07'36" E	16°59'09"

DATE OF LATEST FIELD WORK: JANUARY 14, 2008

RECORDED: \_\_\_\_\_  
PLAT NO.: \_\_\_\_\_

CONDOMINIUM PLAT  
PHASE 3  
THE VILLAS AT SNOWDEN  
OVERLOOK CONDOMINIUM II

GUILFORD ELECTION DISTRICT NO. 6  
HOWARD COUNTY, MARYLAND  
SCALE: 1"=60' JANUARY 2008 SHEET 1 OF 2

GLW GUTSCHICK LITTLE & WEBER, P.A.  
CIVIL ENGINEERS, LAND SURVEYORS, LAND PLANNERS, LANDSCAPE ARCHITECTS  
3909 NATIONAL DRIVE - SUITE 250 - BURTONSVILLE OFFICE PARK  
BURTONSVILLE, MARYLAND 20866  
TEL: 301-421-4024 BALT: 410-880-1820 DC/VA: 301-989-2524 FAX: 301-421-4186

DRAWN BY: *PWC* CHKD BY: *ty* G.L.W. FILE NO. 06-070

*p148371 MSA CSU 2125 4086-1*

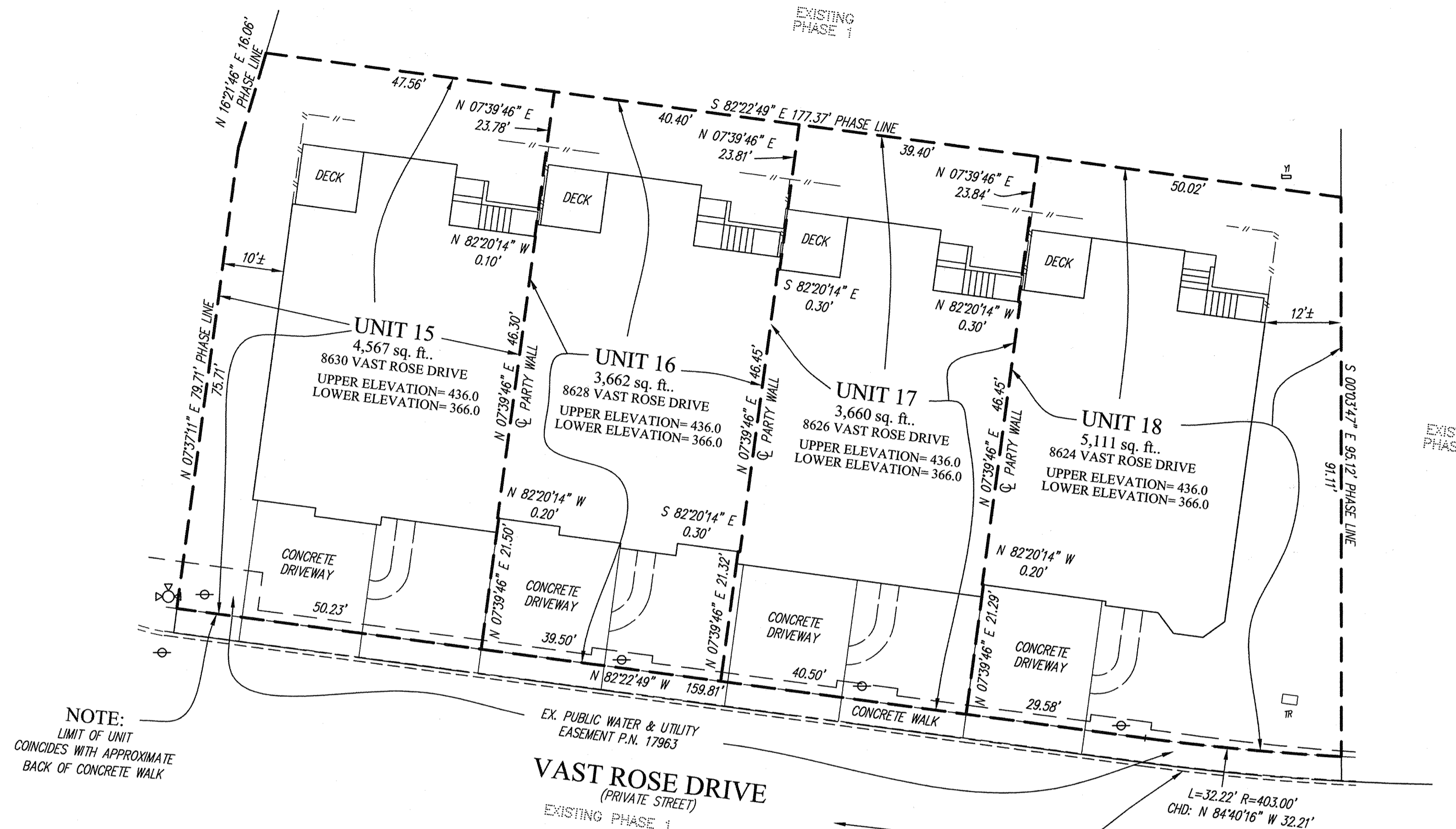
6  
5  
4  
3  
2  
1  
 Maryland State Archives  
 L:\CADD\DRAWINGS\06065\CONDO\PLATS\06-070 CV PH 3.dwg 1/18/2008 3:31:59 PM EST  
 HOWARD COUNTY CIRCUIT COURT, (Plat Book) Plat MDR 19685-19686, MSA\_C2125\_4086. Date available 2008/01/25. Printed 10/13/2011.

1  
2  
3  
4  
5  
6

Maryland State Archives

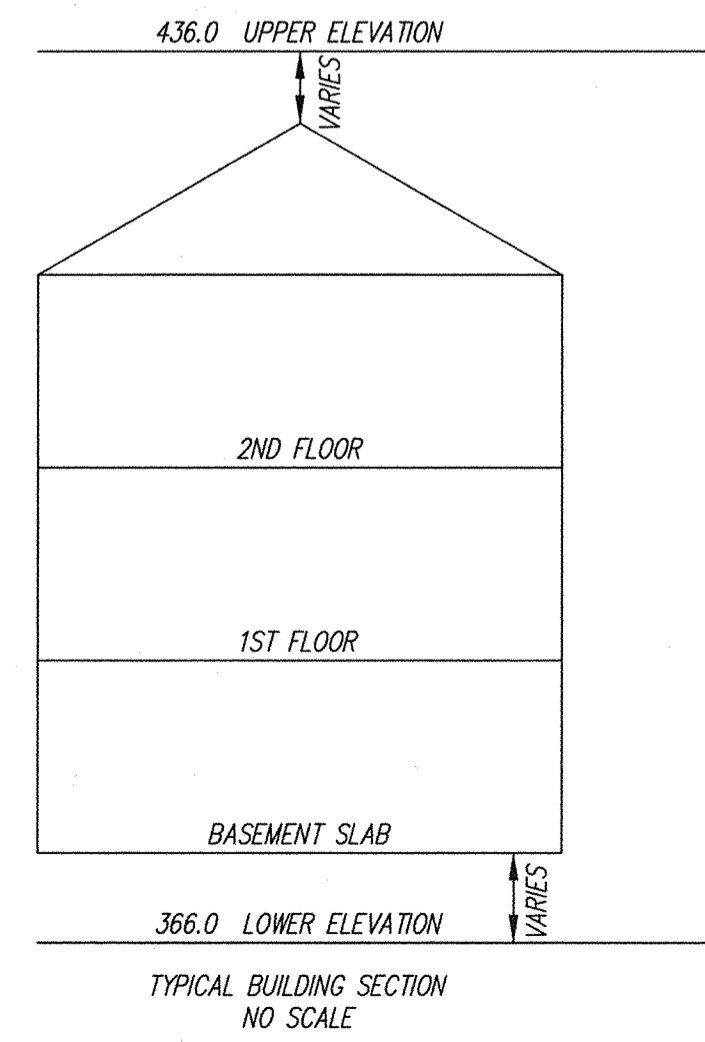
HOWARD COUNTY CIRCUIT COURT (Plat Book) Plat MDR 19685-19686, MSA\_C2125\_4086. Date available 2008/01/25. Printed 10/13/2017.

L:\CADD\DRAWINGS\CONDO\PLATS\06-070 UT PH 3-PL2.dwg 1/18/2008 3:38:22 PM EST



NOTE:  
LIMIT OF UNIT  
COINCIDES WITH APPROXIMATE  
BACK OF CONCRETE WALK

VAST ROSE DRIVE  
(PRIVATE STREET)  
EXISTING PHASE 1



- LEGEND**
- FIRE HYDRANT
  - WATER VALVE
  - STORM DRAIN MANHOLE
  - STORM DRAIN INLET
  - CLEAN OUT
  - LIGHT POLE
  - CONCRETE CURB
  - SEWER MANHOLE
  - CABLE RISER
  - TELEPHONE RISER
  - YARD INLET
  - FENCE

MDR PLAT NO. 19686  
RECEIVED JAN 25 2008  
FOR RECORD

CONDOMINIUM PLAT  
PHASE 3 - UNIT PLAN  
THE VILLAS AT SNOWDEN  
OVERLOOK CONDOMINIUM II

GUILFORD ELECTION DISTRICT NO. 6  
HOWARD COUNTY, MARYLAND  
SCALE: 1"=15' JANUARY 2008 SHEET 2 OF 2

**GLW GUTSCHICK LITTLE & WEBER, P.A.**  
CIVIL ENGINEERS, LAND SURVEYORS, LAND PLANNERS, LANDSCAPE ARCHITECTS  
3909 NATIONAL DRIVE - SUITE 250 - BURTONSVILLE OFFICE PARK  
BURTONSVILLE, MARYLAND 20866  
TEL: 301-421-4024 BALT: 410-880-1820 DC/VA: 301-989-2524 FAX: 301-421-4186

DRAWN BY: *PWC* CHKD. BY: *TY* G.L.W. FILE NO. 06-070

P148372 MSA CSU 2125 4086-2

PLAT FEE-A  
PLAT RECORDING  
TOTAL  
Reel# CH#6 Rpt# 2522  
HW# HEN Rik # 164  
Jan 25, 2008 12:43