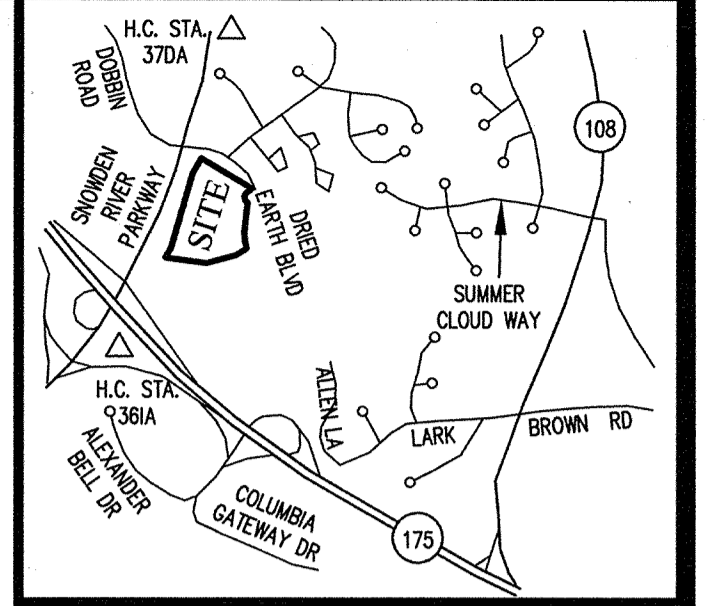
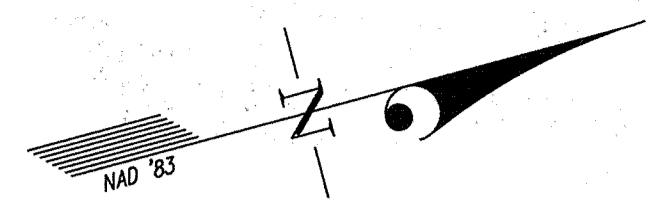


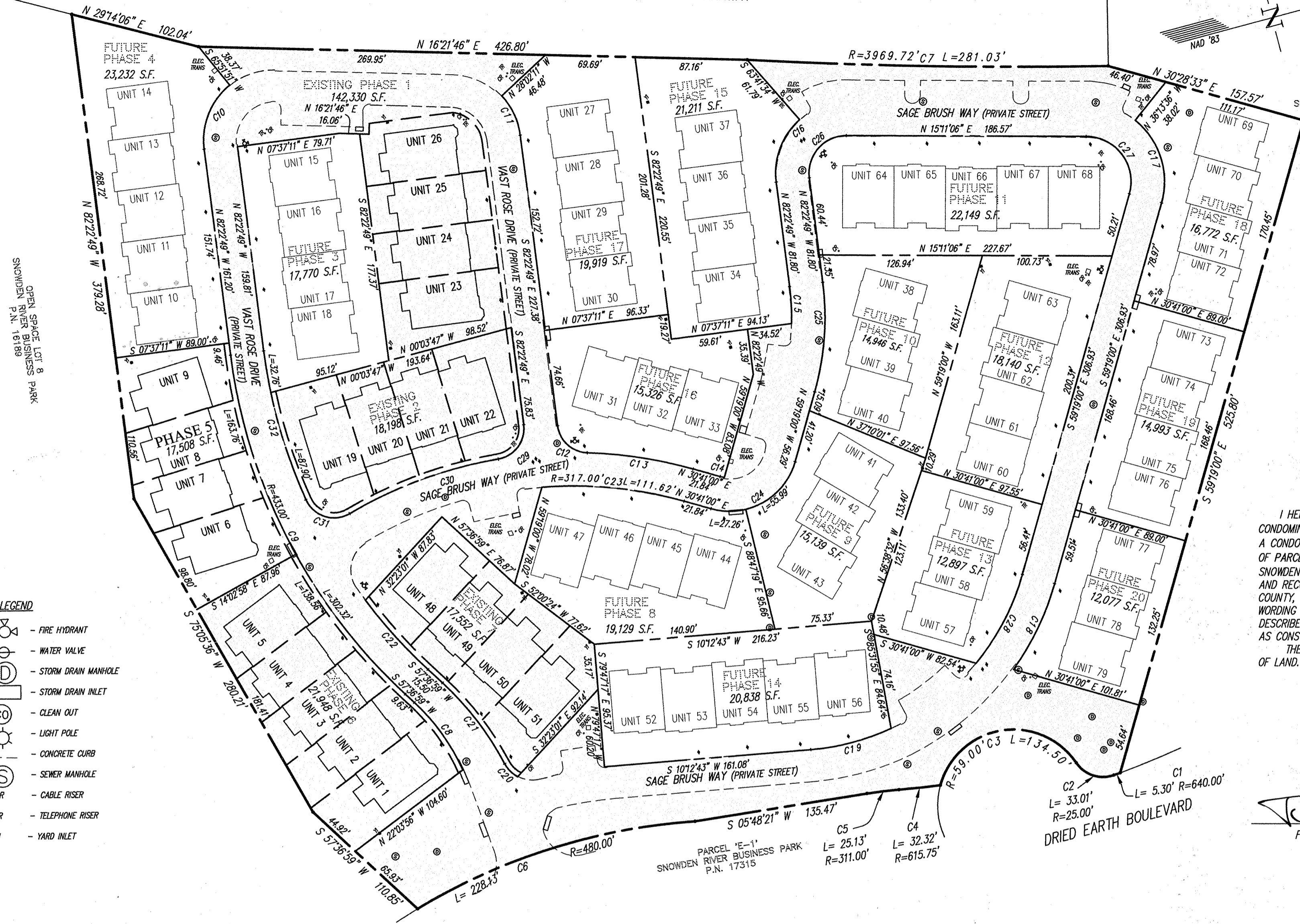
6  
5  
4  
3  
2  
1  
Maryland State Archives

SNOWDEN RIVER PARKWAY



VICINITY MAP  
SCALE: 1"=200'

OPEN SPACE LOT 7  
SNOWDEN RIVER BUSINESS PARK  
P.N. 17962



**OWNER'S DEDICATION**  
U.S. HOME CORPORATION, A DELAWARE CORPORATION, SUCCESSOR BY MERGER TO PATRIOT HOMES, INC., BY CINDY A. HUNTZBERRY, DIVISION PRESIDENT, OWNER OF THE THE PROPERTY SHOWN HEREON AND DESCRIBED IN THE SURVEYOR'S CERTIFICATE, HEREBY ADOPTS THIS CONDOMINIUM PLAT.

BY: *Cindy A. Huntzberry*  
CINDY A. HUNTZBERRY, DIVISION PRESIDENT  
ATTEST: *Thomas C. O'Connor, Jr.*

PLAT FEE-A  
PLAT RECORDIN  
TOTAL  
Res# CH86 Rpt# 308  
MDR# HEN Blk# 852  
Jul 17, 2007 08:57

**SURVEYOR'S CERTIFICATE**

I HEREBY CERTIFY TO THE BEST OF MY KNOWLEDGE, INFORMATION AND BELIEF, THAT THIS CONDOMINIUM PLAT, CONSISTING OF TWO (2) SHEETS, IS A CONDOMINIUM PLAT OF PHASE 5 FOR A CONDOMINIUM KNOWN AS "THE VILLAS AT SNOWDEN OVERLOOK CONDOMINIUM II", BEING PART OF PARCEL "A-2" AS SHOWN ON SUBDIVISION PLAT ENTITLED, "REVISION PLAT, COLUMBIA, SNOWDEN RIVER BUSINESS PARK, SECTION 1 AREA 1, PARCEL "A-2 AND OPEN SPACE LOT 7" AND RECORDED AS PLAT NUMBERS 17961-17963, AMONG THE LAND RECORDS OF HOWARD COUNTY, MARYLAND. I FURTHER CERTIFY THAT THE PLAT, TOGETHER WITH THE APPLICABLE WORDING OF THE DECLARATION, IS A CORRECT REPRESENTATION OF THE CONDOMINIUM DESCRIBED; AND THE IDENTIFICATION AND LOCATION OF EACH UNIT AND THE COMMON ELEMENTS, AS CONSTRUCTED, CAN BE DETERMINED FROM THEM.  
THE TOTAL AREA INCLUDED IN PHASE 5 IS 17,508 SQUARE FEET OR 0.4019 OF AN ACRE OF LAND.

*Thomas C. O'Connor, Jr.* 7/11/07  
FOR GUTSCHICK, LITTLE & WEBER, P.A.  
THOMAS C. O'CONNOR, JR.  
PROFESSIONAL LAND SURVEYOR  
MD. REG. NO. 10954



- LEGEND**
- FIRE HYDRANT
  - WATER VALVE
  - STORM DRAIN MANHOLE
  - STORM DRAIN INLET
  - CLEAN OUT
  - LIGHT POLE
  - CONCRETE CURB
  - SEWER MANHOLE
  - CABLE RISER
  - TELEPHONE RISER
  - YARD INLET

- GENERAL NOTES:**
- ALL PORTIONS OF THIS CONDOMINIUM, OTHER THAN THE UNITS, ARE GENERAL COMMON ELEMENTS.
  - PREVIOUSLY RECORDED PHASES.

**CURVE TABULATION**

CURVE	RADIUS	LENGTH	TANGENT	CHORD	BEARING	DELTA	CURVE	RADIUS	LENGTH	TANGENT	CHORD	BEARING	DELTA
C1	640.00'	5.30'	2.65'	5.30'	S 04°58'06" E	0°28'27"	C17	61.00'	71.24'	40.31'	67.26'	S 87°13'42" W	66°54'37"
C2	25.00'	33.01'	19.41'	30.66'	S 33°05'45" W	75°39'15"	C18	213.00'	74.24'	37.50'	73.86'	N 49°19'55" W	19°58'09"
C3	59.00'	134.50'	128.32'	107.21'	S 05°36'57" W	130°36'50"	C19	187.00'	64.91'	32.78'	64.58'	N 00°16'05" E	19°53'16"
C4	615.75'	32.32'	16.17'	32.32'	S 08°55'51" W	3°00'28"	C20	24.00'	14.39'	7.42'	14.18'	N 60°00'21" E	34°21'40"
C5	311.00'	25.13'	12.57'	25.12'	S 08°07'13" W	4°37'44"	C21	233.00'	79.58'	40.18'	79.20'	S 67°24'05" W	19°34'13"
C6	480.00'	228.13'	116.26'	225.99'	S 02°30'25" E	27°13'53"	C22	407.00'	72.67'	36.43'	72.58'	N 62°43'54" E	10°13'50"
C7	3969.72'	281.03'	140.57'	280.97'	N 15°58'12" E	4°03'22"	C23	317.00'	111.62'	56.39'	111.05'	S 20°35'46" W	20°10'29"
C8	159.00'	64.98'	32.95'	64.52'	S 69°19'24" W	23°24'51"	C24	53.00'	83.25'	53.00'	74.95'	N 14°19'00" W	90°00'00"
C9	433.00'	302.32'	157.61'	296.21'	S 77°37'05" W	40°00'12"	C25	213.00'	85.74'	43.46'	85.16'	N 70°50'55" W	23°03'50"
C10	55.00'	55.91'	30.64'	53.53'	S 53°15'29" E	58°14'40"	C26	29.00'	49.38'	33.11'	43.63'	S 33°35'52" E	97°33'56"
C11	55.00'	34.23'	17.69'	33.68'	S 79°47'30" W	35°39'21"	C27	35.00'	64.45'	46.03'	55.72'	S 67°56'03" W	105°29'54"
C12	24.00'	33.88'	20.45'	31.13'	N 57°10'59" E	80°52'23"	C28	187.00'	78.22'	39.69'	77.65'	N 47°19'59" W	23°58'01"
C13	343.00'	83.43'	41.92'	83.23'	S 23°42'54" W	13°56'13"	C29	24.00'	36.67'	22.99'	33.20'	N 38°36'47" W	87°32'06"
C14	27.00'	3.34'	1.67'	3.34'	N 27°08'12" E	7°05'30"	C30	343.00'	123.85'	62.60'	123.17'	S 05°11'22" E	20°41'15"
C15	187.00'	28.71'	14.38'	28.68'	N 77°58'57" W	8°47'46"	C31	24.00'	40.28'	26.73'	35.72'	N 32°33'01" E	96°10'01"
C16	55.00'	53.83'	29.29'	51.70'	S 54°20'38" E	56°04'23"	C32	407.00'	120.66'	60.78'	120.22'	N 89°07'36" E	16°59'09"

**MDR PLAT NO. 19246**  
**RECEIVED JUL 17 2007**  
**FOR RECORD**

DATE OF LATEST FIELD WORK: JUNE 25, 2007

RECORDED: \_\_\_\_\_  
PLAT NO.: \_\_\_\_\_

**CONDOMINIUM PLAT**  
**PHASE 5**  
**THE VILLAS AT SNOWDEN**  
**OVERLOOK CONDOMINIUM II**

GUILFORD ELECTION DISTRICT NO. 6  
HOWARD COUNTY, MARYLAND  
SCALE: 1"=60' JULY 2007 SHEET 1 OF 2

**GLW GUTSCHICK LITTLE & WEBER, P.A.**  
CIVIL ENGINEERS, LAND SURVEYORS, LAND PLANNERS, LANDSCAPE ARCHITECTS  
3909 NATIONAL DRIVE - SUITE 250 - BURTONSVILLE OFFICE PARK  
BURTONSVILLE, MARYLAND 20866  
TEL: 301-421-4024 BAL: 410-880-1820 DC/VA: 301-989-2524 FAX: 301-421-4186

DRAWN BY: *pwl* CHKD. BY: *toy* G.L.W. FILE NO. 06-070

P11043 MSA Cdu 2125 3903-1

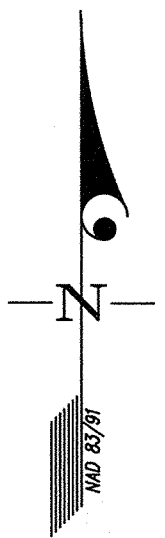
HOWARD COUNTY CIRCUIT COURT (Plat Book) Plat MDR 19246-19247, MSA\_C2125\_3903. Date available 2007/07/17. Printed 10/13/2017.

6  
5  
4  
3  
2  
1  
Manland State Archives

HOWARD COUNTY CIRCUIT COURT (Plat Book) Plat MDR 19246-19247, MSA\_C2125\_3903. Date available 2007/07/17. Printed 10/13/2017.

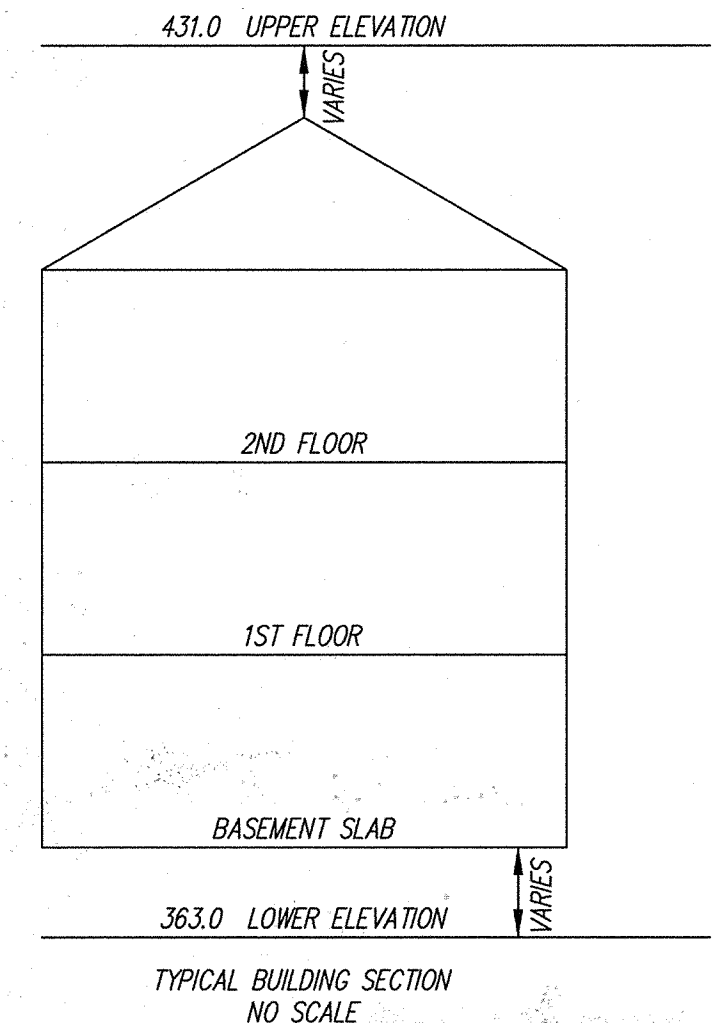
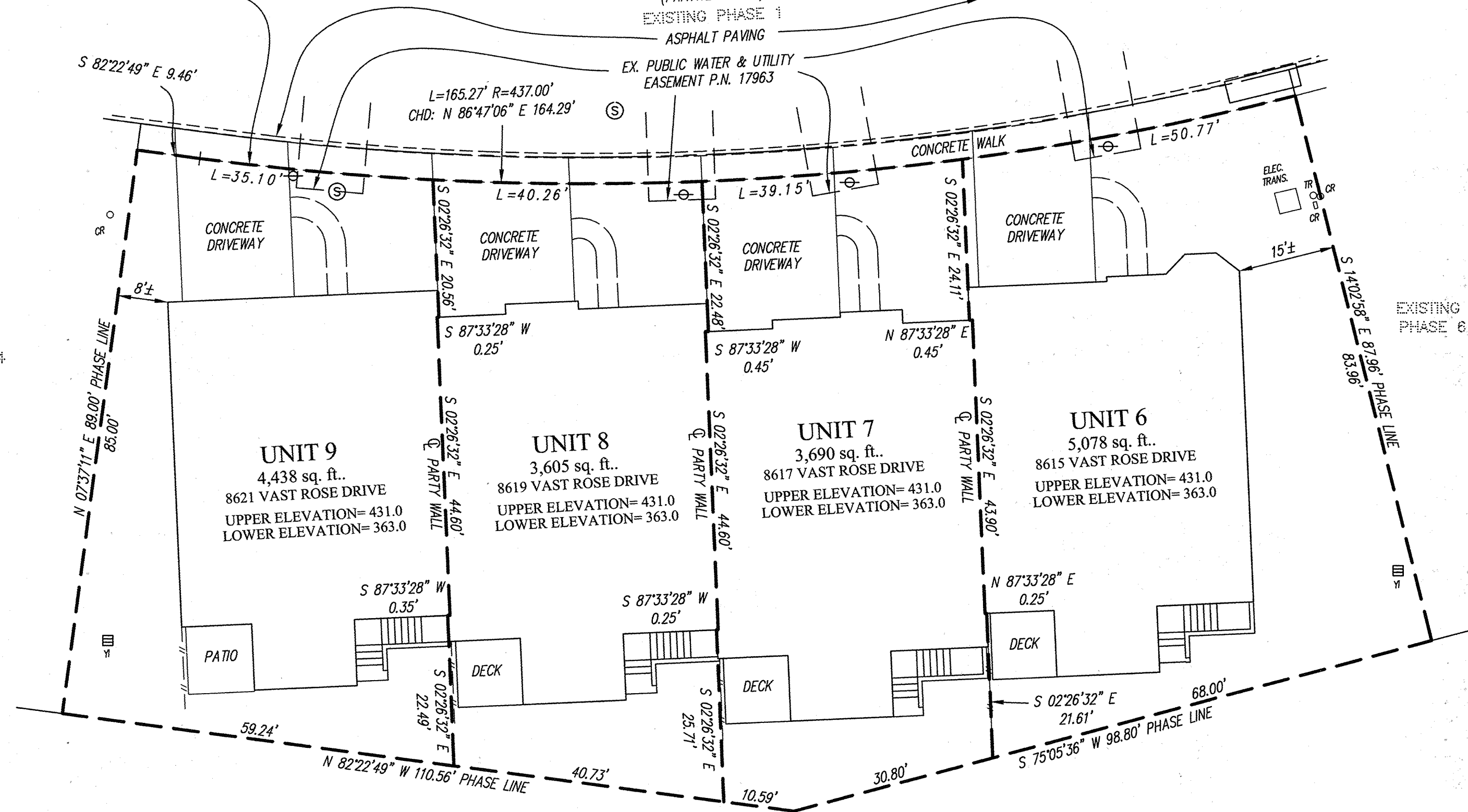
NOTE:  
LIMIT OF UNIT  
COINCIDES WITH APPROXIMATE  
BACK OF CONCRETE WALK

**VAST ROSE DRIVE**  
(PRIVATE STREET)  
EXISTING PHASE 1  
ASPHALT PAVING



PLAT FEE-A  
PLAT RECORDING  
TOTAL  
Res# CH06 Rcpt # 306  
HDR HEN Blk # 051  
Jul 17, 2007 08:58

FUTURE  
PHASE 4



- LEGEND**
- FIRE HYDRANT
  - WATER VALVE
  - STORM DRAIN MANHOLE
  - STORM DRAIN INLET
  - CLEAN OUT
  - LIGHT POLE
  - CONCRETE CURB
  - SEWER MANHOLE
  - CABLE RISER
  - TELEPHONE RISER
  - YARD INLET
  - FENCE

MDR PLAT NO. 19247  
RECEIVED  
FOR RECORD JUL 17 2007

RECORDED: \_\_\_\_\_  
PLAT NO.: \_\_\_\_\_

DATE OF LATEST FIELD WORK: JUNE 25, 2007

7.17.07  
**CONDOMINIUM PLAT  
PHASE 5 - UNIT PLAN  
THE VILLAS AT SNOWDEN  
OVERLOOK CONDOMINIUM II**

GUILFORD ELECTION DISTRICT NO. 6  
HOWARD COUNTY, MARYLAND  
SCALE: 1"=15' JULY 2007

SHEET 2 OF 2

**GLW GUTSCHICK LITTLE & WEBER, P.A.**  
CIVIL ENGINEERS, LAND SURVEYORS, LAND PLANNERS, LANDSCAPE ARCHITECTS  
3909 NATIONAL DRIVE - SUITE 250 - BURTONSVILLE OFFICE PARK  
BURTONSVILLE, MARYLAND 20866  
TEL: 301-421-4024 BAL: 410-880-1820 DC/VA: 301-989-2524 FAX: 301-421-4186

DRAWN BY: *pwc* CHKD. BY: *ty* G.L.W. FILE NO. 06-070

P141644 MSA Csu 2125 3903-2