

VICINITY MAP
SCALE: 1"=200'

OWNER'S DEDICATION

U.S. HOME CORPORATION, A DELAWARE CORPORATION, SUCCESSOR BY MERGER TO PATRIOT HOMES, INC., BY CINDY A. HUNTZBERRY, DIVISION PRESIDENT, OWNER OF THE THE PROPERTY SHOWN HEREON AND DESCRIBED IN THE SURVEYOR'S CERTIFICATE, HEREBY ADOPTS THIS CONDOMINIUM PLAT.

BY: *[Signature]*
CINDY A. HUNTZBERRY, DIVISION PRESIDENT

ATTEST: *[Signature]*

PLAT FEE-A
PLAT RECORDING
TOTAL
Reel: H082 Reel #: 303
MDR: YLR Blk #: 248
Apr: 18, 2007 02:33

SURVEYOR'S CERTIFICATE

I HEREBY CERTIFY TO THE BEST OF MY KNOWLEDGE, INFORMATION AND BELIEF, THAT THIS CONDOMINIUM PLAT, CONSISTING OF TWO (2) SHEETS, IS A CONDOMINIUM PLAT OF PHASE 7 FOR A CONDOMINIUM KNOWN AS "THE VILLAS AT SNOWDEN OVERLOOK II CONDOMINIUM", BEING PART OF PARCEL "A-2" AS SHOWN ON SUBDIVISION PLAT ENTITLED, "REVISION PLAT, COLUMBIA, SNOWDEN RIVER BUSINESS PARK, SECTION 1 AREA 1, PARCEL "A-2 AND OPEN SPACE LOT 7" AND RECORDED AS PLAT NUMBERS 17961-17963, AMONG THE LAND RECORDS OF HOWARD COUNTY, MARYLAND. I FURTHER CERTIFY THAT THE PLAT, TOGETHER WITH THE APPLICABLE WORDING OF THE DECLARATION, IS A CORRECT REPRESENTATION OF THE CONDOMINIUM DESCRIBED; AND THE IDENTIFICATION AND LOCATION OF EACH UNIT AND THE COMMON ELEMENTS, AS CONSTRUCTED, CAN BE DETERMINED FROM THEM.

THE TOTAL AREA INCLUDED IN PHASE 7 IS 17,552 SQUARE FEET OR 0.4029 OF AN ACRE OF LAND.

[Signature] 4/13/07
FOR GUTSCHICK, LITTLE & WEBER, P.A.
THOMAS C. O'CONNOR, JR.
PROFESSIONAL LAND SURVEYOR
MD. REG. NO. 10954



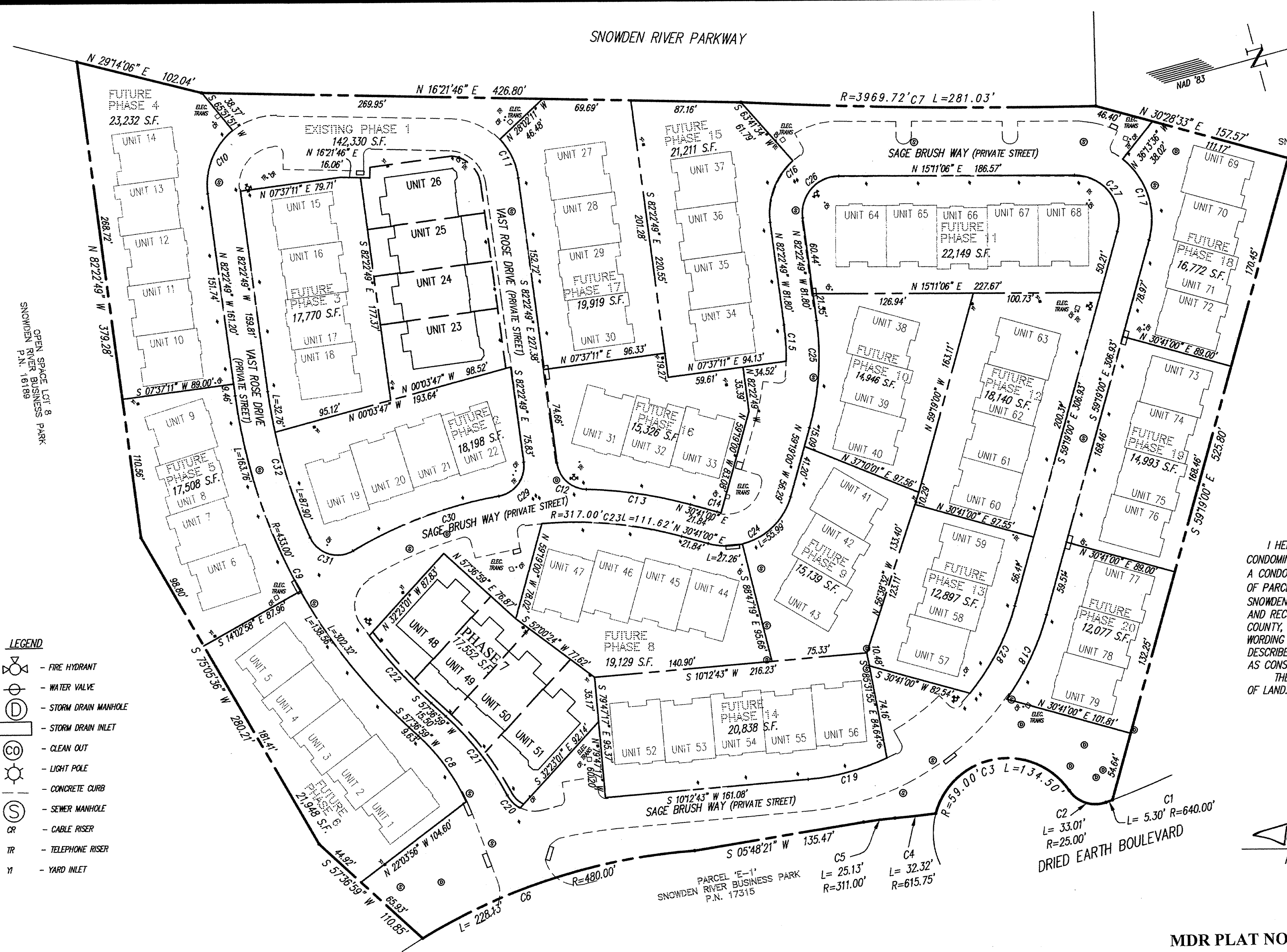
MDR PLAT NO. 19003
RECEIVED APR 18 2007
FOR RECORD

CONDOMINIUM PLAT
PHASE 7
**THE VILLAS AT SNOWDEN
OVERLOOK II CONDOMINIUM**

GUILFORD ELECTION DISTRICT NO. 6
HOWARD COUNTY, MARYLAND
SCALE: 1"=60' MARCH 2007 SHEET 1 OF 2

GLW GUTSCHICK LITTLE & WEBER, P.A.
CIVIL ENGINEERS, LAND SURVEYORS, LAND PLANNERS, LANDSCAPE ARCHITECTS
3909 NATIONAL DRIVE - SUITE 250 - BURTONSVILLE OFFICE PARK
BURTONSVILLE, MARYLAND 20866
TEL: 301-421-4024 BALT: 410-880-1820 DC/VA: 301-989-2524 FAX: 301-421-4186

DRAWN BY: *[Signature]* CHKD. BY: *[Signature]* G.L.W. FILE NO. 06-070



- LEGEND**
- FIRE HYDRANT
 - WATER VALVE
 - STORM DRAIN MANHOLE
 - STORM DRAIN INLET
 - CLEAN OUT
 - LIGHT POLE
 - CONCRETE CURB
 - SEWER MANHOLE
 - CABLE RISER
 - TELEPHONE RISER
 - YARD INLET

GENERAL NOTES:

1. ALL PORTIONS OF THIS CONDOMINIUM, OTHER THAN THE UNITS, ARE GENERAL COMMON ELEMENTS.
2. PREVIOUSLY RECORDED PHASES.

DATE OF LATEST FIELD WORK: MARCH 30, 2007

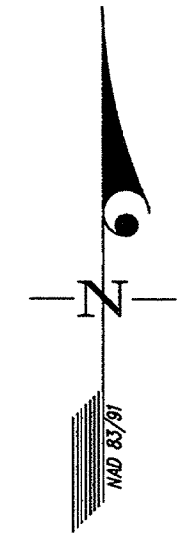
RECORDED: _____

PLAT NO.: _____

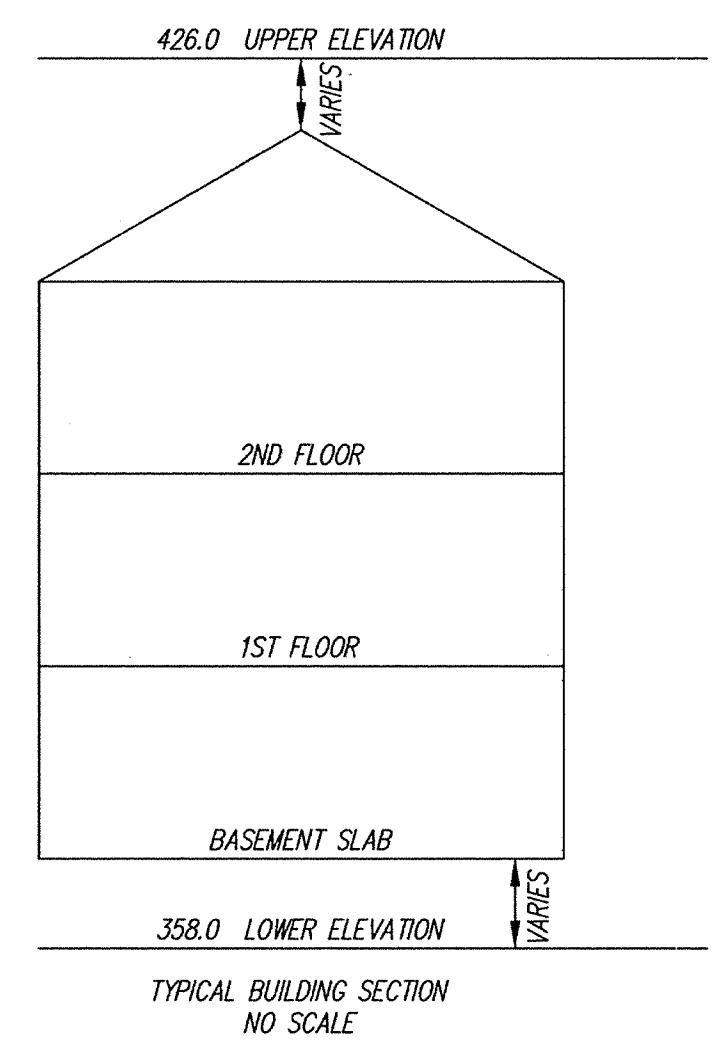
CURVE TABULATION													
CURVE	RADIUS	LENGTH	TANGENT	CHORD	BEARING	DELTA	CURVE	RADIUS	LENGTH	TANGENT	CHORD	BEARING	DELTA
C1	640.00'	5.30'	2.65'	5.30'	S 04°58'06" E	0°28'27"	C17	61.00'	71.24'	40.31'	67.26'	S 87°13'42" W	66°54'37"
C2	25.00'	33.01'	19.41'	30.66'	S 33°05'45" W	75°39'15"	C18	213.00'	74.24'	37.50'	73.86'	N 49°19'55" W	19°58'09"
C3	59.00'	134.50'	128.32'	107.21'	S 05°36'57" W	130°36'50"	C19	187.00'	64.91'	32.78'	64.58'	N 00°16'05" E	19°53'16"
C4	615.75'	32.32'	16.17'	32.32'	S 08°55'51" W	300°28"	C20	24.00'	14.39'	7.42'	14.18'	N 60°00'21" E	34°21'40"
C5	311.00'	25.13'	12.57'	25.12'	S 08°07'13" W	437°44"	C21	233.00'	79.58'	40.18'	79.20'	S 67°24'05" W	19°34'13"
C6	480.00'	228.13'	116.26'	225.99'	S 02°30'25" E	271°35'3"	C22	407.00'	72.67'	36.43'	72.58'	N 62°43'54" E	107°13'50"
C7	3969.72'	281.03'	140.57'	280.97'	N 15°58'12" E	403°22"	C23	317.00'	111.62'	56.39'	111.05'	S 20°35'46" W	207°02'29"
C8	159.00'	64.98'	32.95'	64.52'	S 69°19'24" W	232°45'1"	C24	53.00'	83.25'	53.00'	74.95'	N 14°19'00" W	90°00'00"
C9	433.00'	302.32'	157.61'	296.21'	S 77°37'05" W	400°12"	C25	213.00'	85.74'	43.46'	85.16'	N 70°50'55" W	230°35'50"
C10	55.00'	55.91'	30.64'	53.53'	S 53°15'29" E	58°14'40"	C26	29.00'	49.38'	33.11'	43.63'	S 33°35'52" E	97°33'56"
C11	55.00'	34.23'	17.69'	33.68'	S 79°47'30" W	35°39'21"	C27	35.00'	64.45'	46.03'	55.72'	S 67°56'03" W	105°29'54"
C12	24.00'	33.88'	20.45'	31.13'	N 57°10'59" E	80°52'23"	C28	187.00'	78.22'	39.69'	77.65'	N 47°19'59" W	23°58'01"
C13	343.00'	83.43'	41.92'	83.23'	S 23°42'54" W	13°56'13"	C29	24.00'	36.67'	22.99'	33.20'	N 38°36'47" W	87°32'06"
C14	27.00'	3.34'	1.67'	3.34'	N 27°08'12" E	705°30"	C30	343.00'	123.85'	62.60'	123.17'	S 05°11'22" E	20°41'15"
C15	187.00'	28.71'	14.38'	28.68'	N 77°58'37" W	8°47'46"	C31	24.00'	40.28'	26.73'	35.72'	N 32°33'01" E	96°10'01"
C16	55.00'	53.83'	28.29'	51.70'	S 54°20'38" E	56°04'23"	C32	407.00'	120.66'	60.78'	120.22'	N 89°07'36" E	16°59'09"

HOWARD COUNTY CIRCUIT COURT (Plat Book) Plat MDR 19003-19004, MSA, C2125, 3801. Date available 2007/04/18. Printed 10/13/2007. 11:13:28 AM '07

HOWARD COUNTY CIRCUIT COURT (Plat Book) Plat MDR 19003-19004, MSA C2125, 3801. Date available 2007/04/18. Printed 10/13/2017.
 L:\CADD\DRAWINGS\04665\CONDO\PLATS\06-070 UT PH 7-PL2.dwg 4/17/2007 11:47:40 AM EDT



PLAT FEE-A
 PLAT RECORDING
 TOTAL
 Recd: H002 Rpt: 300
 HW: TL: Blk: 240
 Apr 16: 2007 02:34



NOTE:
 LIMIT OF UNIT
 COINCIDES WITH APPROXIMATE
 BACK OF CONCRETE WALK

- LEGEND**
- FIRE HYDRANT
 - WATER VALVE
 - STORM DRAIN MANHOLE
 - STORM DRAIN INLET
 - CLEAN OUT
 - LIGHT POLE
 - CONCRETE CURB
 - SEWER MANHOLE
 - CR - CABLE RISER
 - TR - TELEPHONE RISER
 - YI - YARD INLET
 - // — - FENCE

MDR PLAT NO. 19004
 RECEIVED APR 18 2007
 FOR RECORD

[Signature]
 4/18/07

CONDOMINIUM PLAT
 PHASE 7 - UNIT PLAN
 THE VILLAS AT SNOWDEN
 OVERLOOK II CONDOMINIUM

GUILFORD ELECTION DISTRICT NO. 6
 HOWARD COUNTY, MARYLAND
 SCALE: 1"=15' MARCH 2007 SHEET 2 OF 2

GLW GUTSCHICK LITTLE & WEBER, P.A.
 CIVIL ENGINEERS, LAND SURVEYORS, LAND PLANNERS, LANDSCAPE ARCHITECTS
 3909 NATIONAL DRIVE - SUITE 250 - BURTONSVILLE OFFICE PARK
 BURTONSVILLE, MARYLAND 20866
 TEL: 301-421-4024 BAL: 410-880-1820 DC/VA: 301-989-2524 FAX: 301-421-4186

DRAWN BY: *DWC* CHKD. BY: *TBY* G.L.W. FILE NO. 06-070

RECORDED: _____
 PLAT NO.: _____

DATE OF LATEST FIELD WORK: MARCH 30, 2007

P37522 MSA CSU 2125 3801-2