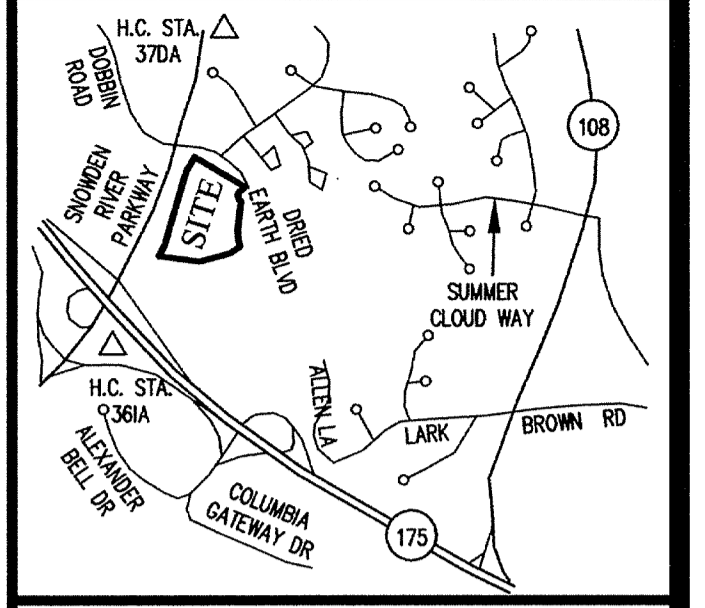
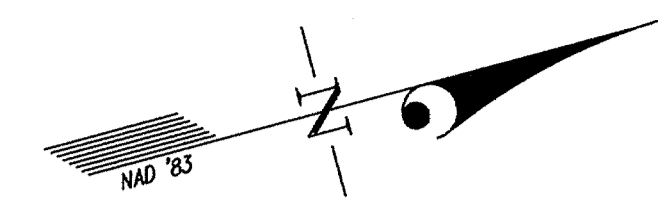


SNOWDEN RIVER PARKWAY



VICINITY MAP
SCALE: 1"=2000'

OPEN SPACE LOT 7
SNOWDEN RIVER BUSINESS PARK
P.N. 17962

OWNER'S DEDICATION
U.S. HOME CORPORATION, A DELAWARE CORPORATION, SUCCESSOR BY MERGER TO PATRIOT HOMES, INC., BY CINDY A. HUNTZBERRY, DIVISION PRESIDENT, OWNER OF THE THE PROPERTY SHOWN HEREON AND DESCRIBED IN THE SURVEYOR'S CERTIFICATE, HEREBY ADOPTS THIS CONDOMINIUM PLAT.

BY: *[Signature]*
CINDY A. HUNTZBERRY, DIVISION PRESIDENT

ATTEST: *[Signature]*

PLAT FEE-A
PLAT RECORDING
TOTAL
RECORDING FEE
MDR TLR
APR 16, 2007

SURVEYOR'S CERTIFICATE

I HEREBY CERTIFY TO THE BEST OF MY KNOWLEDGE, INFORMATION AND BELIEF, THAT THIS CONDOMINIUM PLAT, CONSISTING OF TWO (2) SHEETS, IS A CONDOMINIUM PLAT OF PHASE 1 FOR A CONDOMINIUM KNOWN AS "THE VILLAS AT SNOWDEN OVERLOOK II CONDOMINIUM", BEING PART OF PARCEL 'A-2' AS SHOWN ON SUBDIVISION PLAT ENTITLED, "REVISION PLAT, COLUMBIA, SNOWDEN RIVER BUSINESS PARK, SECTION 1 AREA 1, PARCEL 'A-2' AND OPEN SPACE LOT 7" AND RECORDED AS PLAT NUMBERS 17961-17963, AMONG THE LAND RECORDS OF HOWARD COUNTY, MARYLAND. I FURTHER CERTIFY THAT THE PLAT, TOGETHER WITH THE APPLICABLE WORDING OF THE DECLARATION, IS A CORRECT REPRESENTATION OF THE CONDOMINIUM DESCRIBED; AND THE IDENTIFICATION AND LOCATION OF EACH UNIT AND THE COMMON ELEMENTS, AS CONSTRUCTED, CAN BE DETERMINED FROM THEM.

THE TOTAL AREA INCLUDED IN PHASE 1 IS 142,330 SQUARE FEET OR 3.2674 ACRES OF LAND.

[Signature] 4/13/07
FOR GUTSCHICK, LITTLE & WEBER, P.A.
THOMAS C. O'CONNOR, JR.
PROFESSIONAL LAND SURVEYOR
MD. REG. NO. 10954



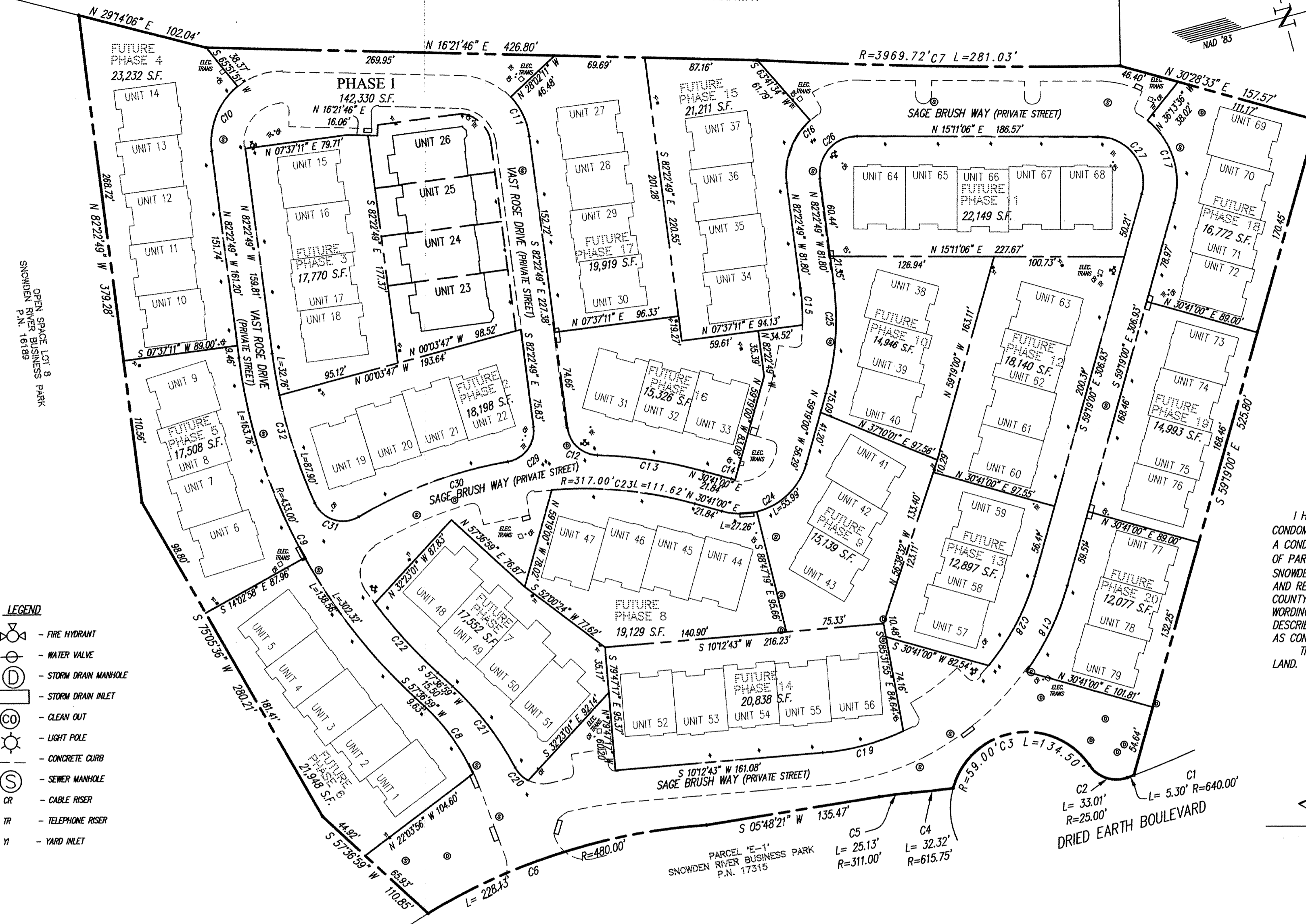
MDR PLAT NO. 19001
RECEIVED APR 16 2007
FOR RECORD

CONDOMINIUM PLAT
PHASE 1
**THE VILLAS AT SNOWDEN
OVERLOOK II CONDOMINIUM**

GUILFORD ELECTION DISTRICT NO. 6
HOWARD COUNTY, MARYLAND
SCALE: 1"=60' MARCH 2007 SHEET 1 OF 2

GLW GUTSCHICK LITTLE & WEBER, P.A.
CIVIL ENGINEERS, LAND SURVEYORS, LAND PLANNERS, LANDSCAPE ARCHITECTS
3909 NATIONAL DRIVE - SUITE 250 - BURTONSVILLE OFFICE PARK
BURTONSVILLE, MARYLAND 20886
TEL: 301-421-4024 BALT: 410-880-1820 DC/VA: 301-989-2524 FAX: 301-421-4186

DRAWN BY: *[Signature]* CHKD. BY: *[Signature]* G.L.W. FILE NO. 06-070



- LEGEND**
- FIRE HYDRANT
 - WATER VALVE
 - STORM DRAIN MANHOLE
 - STORM DRAIN INLET
 - CLEAN OUT
 - LIGHT POLE
 - CONCRETE CURB
 - SEWER MANHOLE
 - CABLE RISER
 - TELEPHONE RISER
 - YARD INLET

GENERAL NOTES:

1. ALL PORTIONS OF THIS CONDOMINIUM, OTHER THAN THE UNITS, ARE GENERAL COMMON ELEMENTS.

CURVE TABULATION

CURVE	RADIUS	LENGTH	TANGENT	CHORD	BEARING	DELTA	CURVE	RADIUS	LENGTH	TANGENT	CHORD	BEARING	DELTA
C1	640.00'	5.30'	2.65'	5.30'	S 04°58'06" E	0°28'27"	C17	61.00'	71.24'	40.31'	67.26'	S 87°13'42" W	66°54'37"
C2	25.00'	33.01'	19.41'	30.66'	S 33°05'45" W	75°39'15"	C18	213.00'	74.24'	37.50'	73.86'	N 49°19'55" W	19°58'09"
C3	59.00'	134.50'	128.32'	107.21'	S 05°36'57" W	130°36'50"	C19	187.00'	64.91'	32.78'	64.58'	N 00°16'05" E	19°53'16"
C4	615.75'	32.32'	16.17'	32.32'	S 08°55'51" W	3°00'28"	C20	24.00'	14.39'	7.42'	14.18'	N 60°00'21" E	34°21'40"
C5	311.00'	25.13'	12.57'	25.12'	S 08°07'13" W	4°37'44"	C21	233.00'	79.58'	40.18'	79.20'	S 67°24'05" W	19°34'13"
C6	480.00'	228.13'	116.26'	225.99'	S 02°30'25" E	27°13'53"	C22	407.00'	72.67'	36.43'	72.58'	N 62°43'54" E	10°13'50"
C7	3969.72'	281.03'	140.57'	280.97'	N 15°58'12" E	4°03'22"	C23	317.00'	111.62'	56.39'	111.05'	S 20°35'46" W	20°10'29"
C8	159.00'	64.98'	32.95'	64.52'	S 69°19'24" W	23°24'51"	C24	53.00'	83.25'	53.00'	74.95'	N 14°19'00" W	90°00'00"
C9	433.00'	302.32'	157.61'	296.21'	S 77°37'05" W	40°00'12"	C25	213.00'	85.74'	43.46'	85.16'	N 70°50'55" W	23°03'50"
C10	55.00'	55.91'	30.64'	53.53'	S 93°15'29" E	58°14'40"	C26	29.00'	49.38'	33.11'	43.63'	S 33°35'52" E	97°33'56"
C11	55.00'	34.23'	17.69'	33.68'	S 79°47'30" W	35°39'21"	C27	35.00'	64.45'	46.03'	55.72'	S 67°56'03" W	105°29'54"
C12	24.00'	33.88'	20.45'	31.13'	N 57°10'59" E	80°52'23"	C28	187.00'	78.22'	39.69'	77.65'	N 47°19'59" W	23°58'01"
C13	343.00'	83.43'	41.92'	83.23'	S 23°42'54" W	13°56'13"	C29	24.00'	36.67'	22.99'	33.20'	N 38°36'47" W	87°32'06"
C14	27.00'	3.34'	1.67'	3.34'	N 27°08'12" E	7°05'30"	C30	343.00'	123.85'	62.60'	123.17'	S 05°11'22" E	20°41'15"
C15	187.00'	28.71'	14.38'	28.68'	N 77°58'57" W	8°47'46"	C31	24.00'	40.28'	26.73'	35.72'	N 32°33'01" E	96°10'01"
C16	55.00'	53.83'	29.29'	51.70'	S 54°20'38" E	56°04'23"	C32	407.00'	120.66'	60.78'	120.22'	N 89°07'36" E	16°59'09"

DATE OF LATEST FIELD WORK: MARCH 30, 2007

RECORDED: _____
PLAT NO.: _____

P137519 USA CU 2125 3800-1

HOWARD COUNTY CIRCUIT COURT (Plat Book) MDR 19001-19002, MSA C2125, 3800. Date available 2007/04/18. Printed 10/13/2017. L:\CADD\DRAWINGS\04965\CONDO\PLATS\06-070 CV PH 1.dwg 4/12/2007 11:23:46 AM EDT

1
2
3
4
5
6

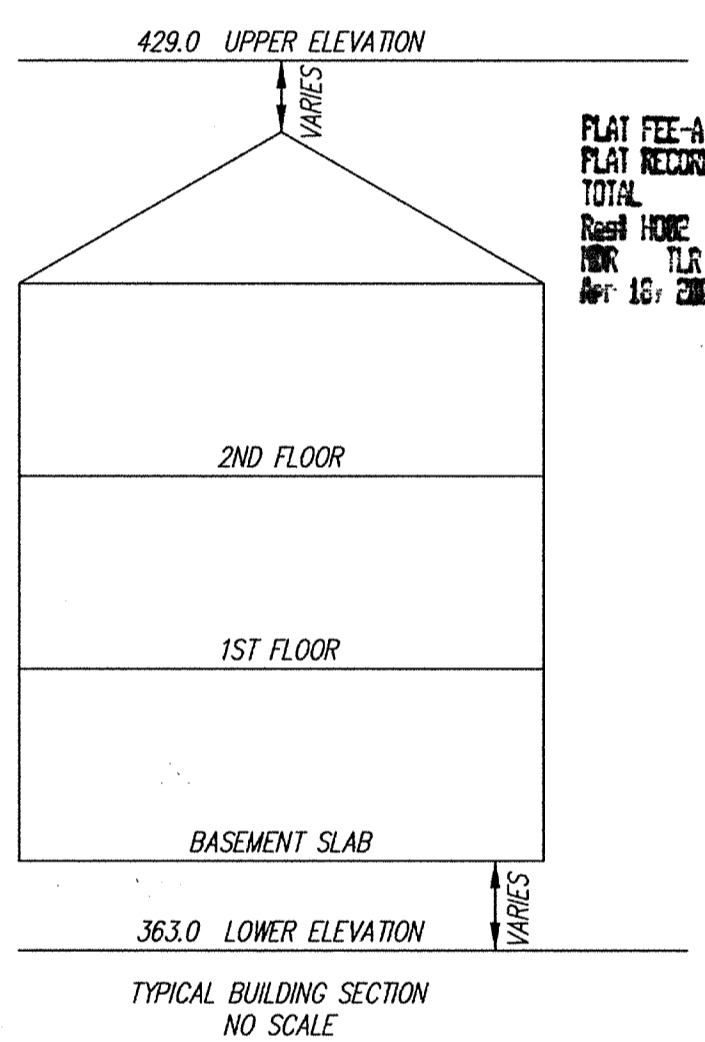
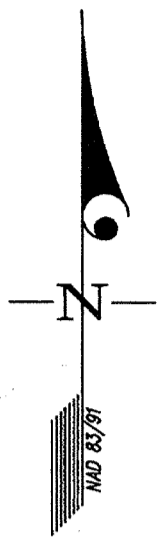
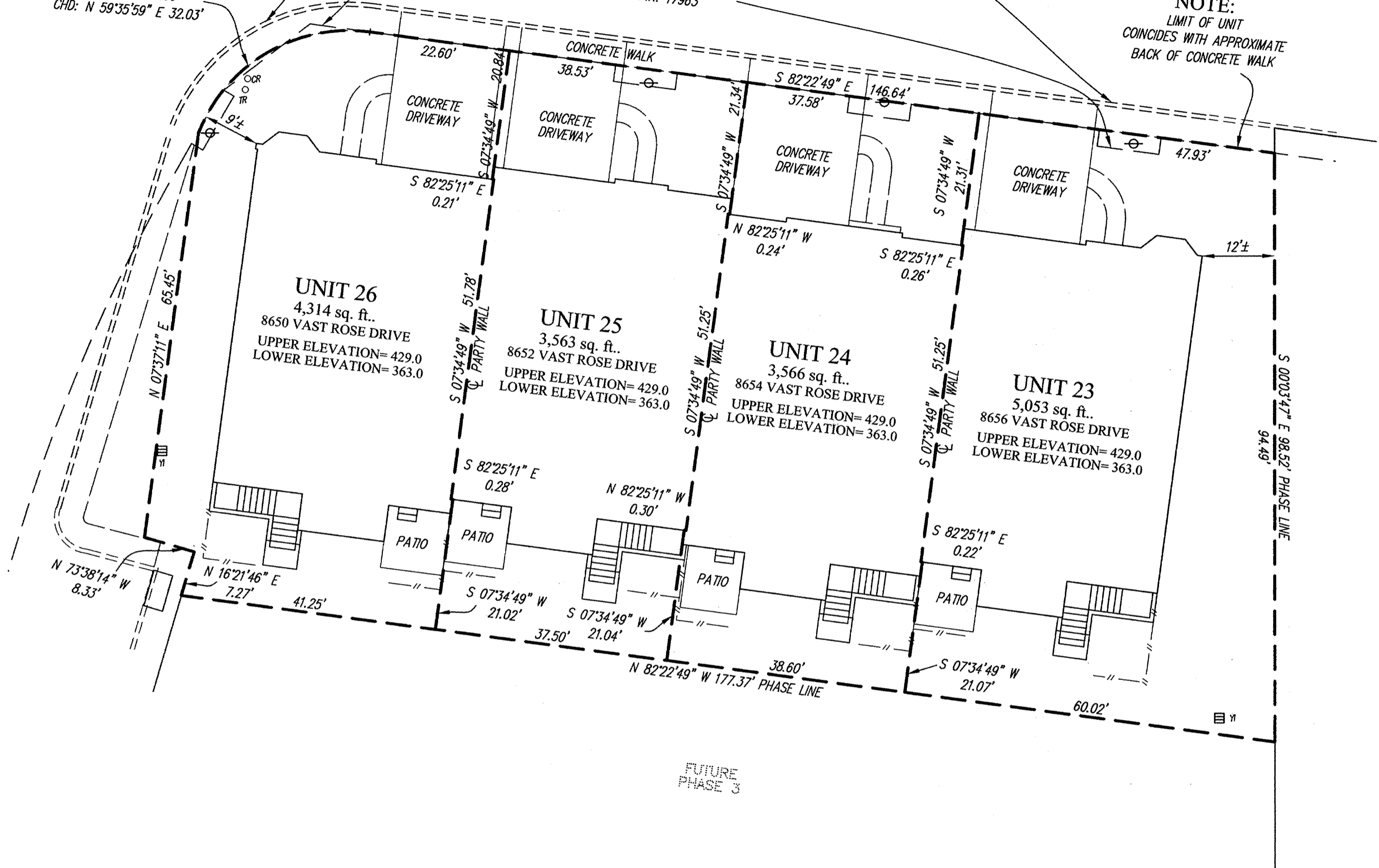
Maryland State Archives

VAST ROSE DRIVE
(PRIVATE STREET)
PART OF PHASE 1

L=34.51' R=26.00'
CHD: N 59°35'59" E 32.03'

EX. PUBLIC WATER & UTILITY
EASEMENT P.N. 17963

NOTE:
LIMIT OF UNIT
COINCIDES WITH APPROXIMATE
BACK OF CONCRETE WALK



FLAT FEE-A
FLAT RECORD
TOTAL
RES# HOME Res# # 34
MDR TLR Bk# # 24
Apr 18, 2007 02:38

FUTURE PHASE 2

FUTURE PHASE 3

LEGEND

- FIRE HYDRANT
- WATER VALVE
- STORM DRAIN MANHOLE
- STORM DRAIN INLET
- CLEAN OUT
- LIGHT POLE
- CONCRETE CURB
- SEWER MANHOLE
- CABLE RISER
- TELEPHONE RISER
- YARD INLET
- FENCE

MDR PLAT NO. 19002
RECEIVED APR 18 2007
FOR RECORD

4/18/07

CONDOMINIUM PLAT
PHASE 1 - UNIT PLAN
THE VILLAS AT SNOWDEN
OVERLOOK II CONDOMINIUM

GUILFORD ELECTION DISTRICT NO. 6
HOWARD COUNTY, MARYLAND
SCALE: 1"=15' MARCH 2007 SHEET 2 OF 2

GLW GUTSCHICK LITTLE & WEBER, P.A.
CIVIL ENGINEERS, LAND SURVEYORS, LAND PLANNERS, LANDSCAPE ARCHITECTS
3909 NATIONAL DRIVE - SUITE 250 - BURTONSVILLE OFFICE PARK
BURTONSVILLE, MARYLAND 20866
TEL: 301-421-4024 BAL: 410-880-1820 DC/VA: 301-989-2524 FAX: 301-421-4186

DRAWN BY: *RWC* CHKD. BY: *ty* G.L.W. FILE NO. 06-070

RECORDED: _____
PLAT NO.: _____

DATE OF LATEST FIELD WORK: MARCH 30, 2007

P137520

MSA CSM 2125 3800-2

HOWARD COUNTY CIRCUIT COURT (Plat Book) Plat MDR 19001-19002, MSA C2125 3800. Date available 2007/04/18. Printed 10/13/2017. L:\CAD\DRAWINGS\04065\CONDOP\PLATS\06-070 UT PH 1-PL2.dwg 4/7/2007 11:40:17 AM EDT