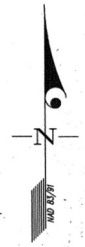
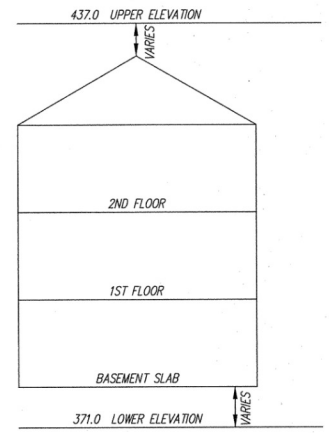


NOTE:
 LIMIT OF UNIT
 COINCIDES WITH APPROXIMATE
 BACK OF CONCRETE WALK



PLAT SET-A
 PLAT NUMBER
 TOTAL
 DATE
 FEB 16, 2006



- LEGEND
- FIRE HYDRANT
 - WATER VALVE
 - STORM DRAIN MANHOLE
 - STORM DRAIN INLET
 - CLEAN OUT
 - LIGHT POLE
 - SEWER MANHOLE
 - GAS VALVE
 - YARD INLET

CONDOMINIUM PLAT
 PHASE 5 - UNIT PLAN
 THE VILLAS AT SNOWDEN
 OVERLOOK CONDOMINIUM

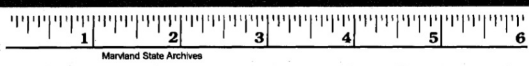
GUILFORD ELECTION DISTRICT NO. 6
 HOWARD COUNTY, MARYLAND
 SCALE: 1"=15' FEBRUARY 2006 SHEET 2 OF 3

GLW GUTSCHICK LITTLE & WEBER, P.A.
 CIVIL ENGINEERS, LAND SURVEYORS, LAND PLANNERS, LANDSCAPE ARCHITECTS
 3909 NATIONAL DRIVE - SUITE 250 - BURTONSVILLE OFFICE PARK
 BURTONSVILLE, MARYLAND 20886
 TEL: 301-421-4024 BAL: 410-880-1820 DC/VA: 301-989-2524 FAX: 301-421-4186

DRAWN BY: PWC CHK. BY: TBY G.L.W. FILE NO. 04-110

RECORDED: _____
 PLAT NO.: _____

DATE OF LATEST FIELD WORK: FEBRUARY 2, 2006



P119927 MSA CSU 2125 3356-2

L:\CADD\DRAWINGS\04110\PLATS\04-110\UT-PH 5&10-P.L2.dwg 2/10/2006 7:02:29 AM EST