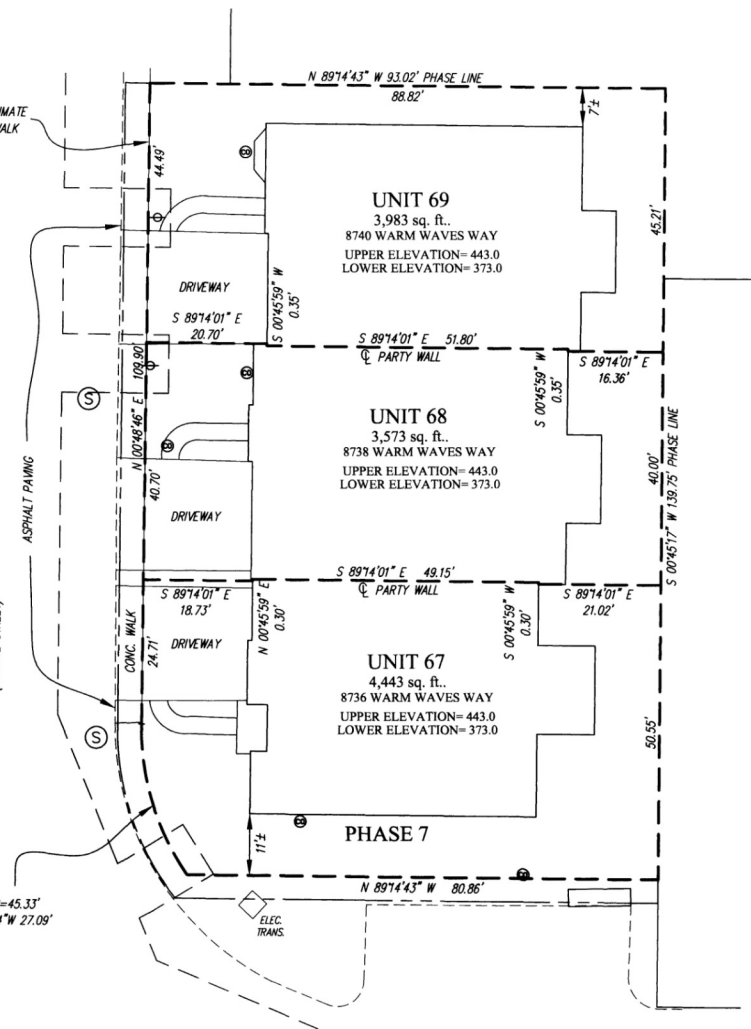


NOTE:  
LIMIT OF UNIT  
COINCIDES WITH APPROXIMATE  
BACK OF CONCRETE WALK

EX. PUBLIC WATER & UTILITY  
EASEMENT P.N. 16924

EXISTING PHASE 1  
WARM WAVES WAY  
(PRIVATE STREET)

L=27.51' R=45.33'  
CHD: N16°34'14"W 27.09'



FUTURE  
PHASE 6

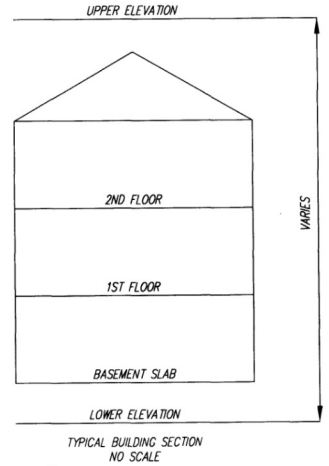
PHASE 8



PLAT M.D.R. NO. 17731

SEP 23 2005

PLAT FEE-A  
PLAT REDDOLIN  
TOTAL  
Rev# CHGS Rec'd \$ 236  
MOR FJR BIL # 548  
Sep 23 2005 18:44



- LEGEND
- FIRE HYDRANT
  - WATER VALVE
  - STORM DRAIN MANHOLE
  - STORM DRAIN INLET
  - CLEAN OUT
  - LIGHT POLE
  - SEWER MANHOLE
  - GAS VALVE

*Handwritten signature and date: 9/22/05*

CONDOMINIUM PLAT  
PHASE 7 - UNIT PLAN  
THE VILLAS AT SNOWDEN  
OVERLOOK CONDOMINIUM

GUILFORD ELECTION DISTRICT NO. 6  
HOWARD COUNTY, MARYLAND  
SCALE: 1"=15' SEPTEMBER 2005 SHEET 2 OF 3

**GLW** GUTSCHICK LITTLE & WEBER, P.A.

CIVIL ENGINEERS, LAND SURVEYORS, LAND PLANNERS, LANDSCAPE ARCHITECTS  
3909 NATIONAL DRIVE - SUITE 250 - BURTOWNSVILLE OFFICE PARK  
BURTOWNSVILLE, MARYLAND 20866

TEL: 301-421-4024 BALT: 410-880-1820 DC/VA: 301-989-2524 FAX: 301-421-4186

DRAWN BY: *AWC* CHKD. BY: *JWC* G.L.W. FILE NO. 04-110

*P112812 msk csn 2125-3205-2*

RECORDED: \_\_\_\_\_  
PLAT NO.: \_\_\_\_\_

DATE OF LATEST FIELD WORK: SEPTEMBER 7, 2005



L:\CADD\DRAWINGS\04110\PLATS\04-110\1-PH 7&8-PL2.dwg 9/19/2005 3:46:46 PM EST