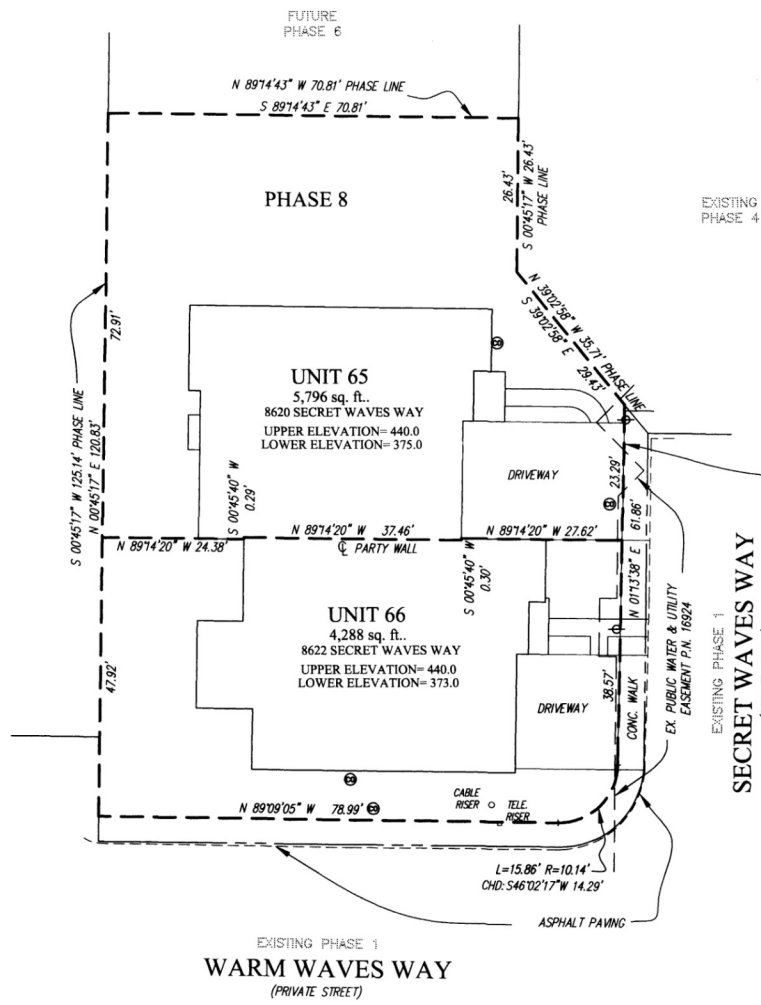


PLAT M.D.R. NO. 17732

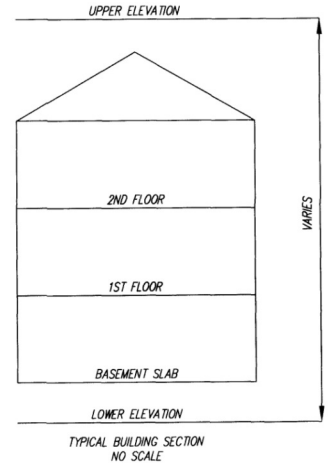
SEP 23 2005



PLAT FEE - \$  
FLAT FEE - \$  
TOTAL  
HOB. CHG. \$ 350  
HOB. P.R. \$ 360  
SEP 23, 2005



NOTE:  
LIMIT OF UNIT  
CONCIDES WITH APPROXIMATE  
BACK OF CONCRETE WALK



- LEGEND**
- FIRE HYDRANT
  - WATER VALVE
  - STORM DRAIN MANHOLE
  - STORM DRAIN INLET
  - CLEAN OUT
  - LIGHT POLE
  - SEWER MANHOLE
  - GAS VALVE

*Handwritten signature and date: 9/22/05*

**CONDOMINIUM PLAT  
PHASE 8 - UNIT PLAN  
THE VILLAS AT SNOWDEN  
OVERLOOK CONDOMINIUM**

GUILFORD ELECTION DISTRICT NO. 6  
HOWARD COUNTY, MARYLAND  
SCALE: 1"=15' SEPTEMBER 2005 SHEET 3 OF 3

**GLW GUTSCHICK LITTLE & WEBER, P.A.**  
 CIVIL ENGINEERS, LAND SURVEYORS, LAND PLANNERS, LANDSCAPE ARCHITECTS  
 3909 NATIONAL DRIVE - SUITE 250 - BURTONSVILLE OFFICE PARK  
 BURTONSVILLE, MARYLAND 20886  
 TEL: 301-421-4024 BAL: 410-880-1820 DC/VA: 301-989-2524 FAX: 301-421-4186

DRAWN BY: *PWC* CHKD. BY: *JTC* G.L.W. FILE NO. 04-110

RECORDED: \_\_\_\_\_  
PLAT NO.: \_\_\_\_\_

DATE OF LATEST FIELD WORK: SEPTEMBER 14, 2005

*P112818* *msd csn 2125-3205-3*

L:\CAD\DRAWINGS\0410\PLA\5104-11021-24-786-03.dwg 9/19/2005 3:50:31 PM EST