

L:\CAD\DRAWINGS\0410\PLATS\04-110\11-PL-4.dwg 8/12/2005 7:54:34 AM EST

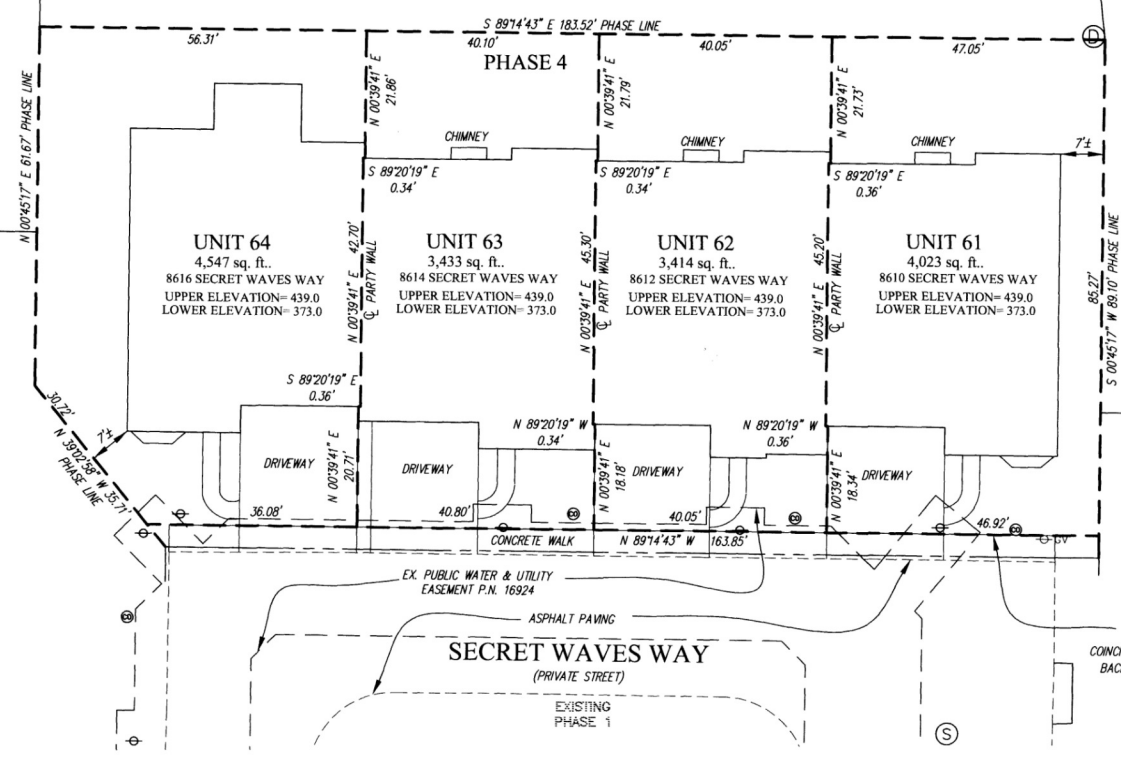
FUTURE PHASE 6

FUTURE PHASE B

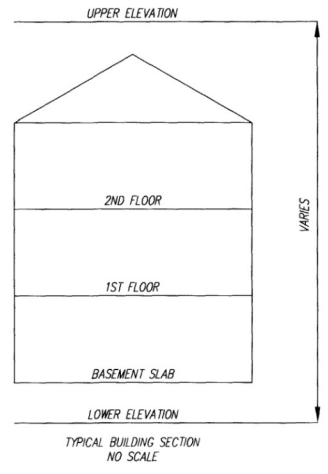
FUTURE PHASE 5

FUTURE PHASE 3

EXISTING PHASE 2



PLAT-M.D.R. NO. 17655
 AUG 16 2005



NOTE:
 LIMIT OF UNIT
 COINCIDES WITH APPROXIMATE
 BACK OF CONCRETE WALK

LEGEND

- FIRE HYDRANT
- WATER VALVE
- STORM DRAIN MANHOLE
- STORM DRAIN INLET
- CLEAN OUT
- LIGHT POLE
- SEWER MANHOLE
- GAS VALVE

Handwritten signature
 8/15/05

CONDOMINIUM PLAT
 PHASE 4 - UNIT PLAN
 THE VILLAS AT SNOWDEN
 OVERLOOK CONDOMINIUM

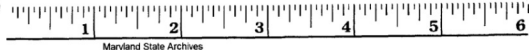
GUILFORD ELECTION DISTRICT NO. 6
 HOWARD COUNTY, MARYLAND
 SCALE: 1"=15' AUGUST 2005 SHEET 2 OF 2

GLW GUTSCHICK LITTLE & WEBER, P.A.
 CIVIL ENGINEERS, LAND SURVEYORS, LAND PLANNERS, LANDSCAPE ARCHITECTS
 3909 NATIONAL DRIVE - SUITE 250 - BURTONSVILLE OFFICE PARK
 BURTONSVILLE, MARYLAND 20866
 TEL: 301-421-4024 BAL: 410-880-1820 DC/VA: 301-989-2524 FAX: 301-421-4186

DRAWN BY: *PWC* CHKD. BY: *JWC* G.L.W. FILE NO. 04-110

RECORDED: _____
 PLAT NO.: _____

DATE OF LATEST FIELD WORK: AUGUST 10, 2005



0111520 MSA CSW 2123-3120-2