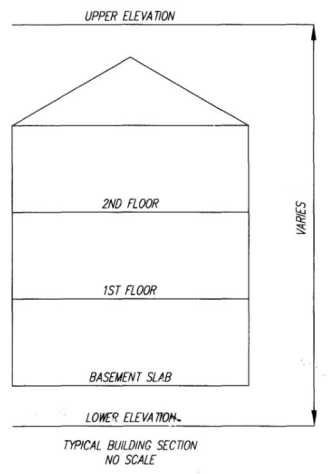
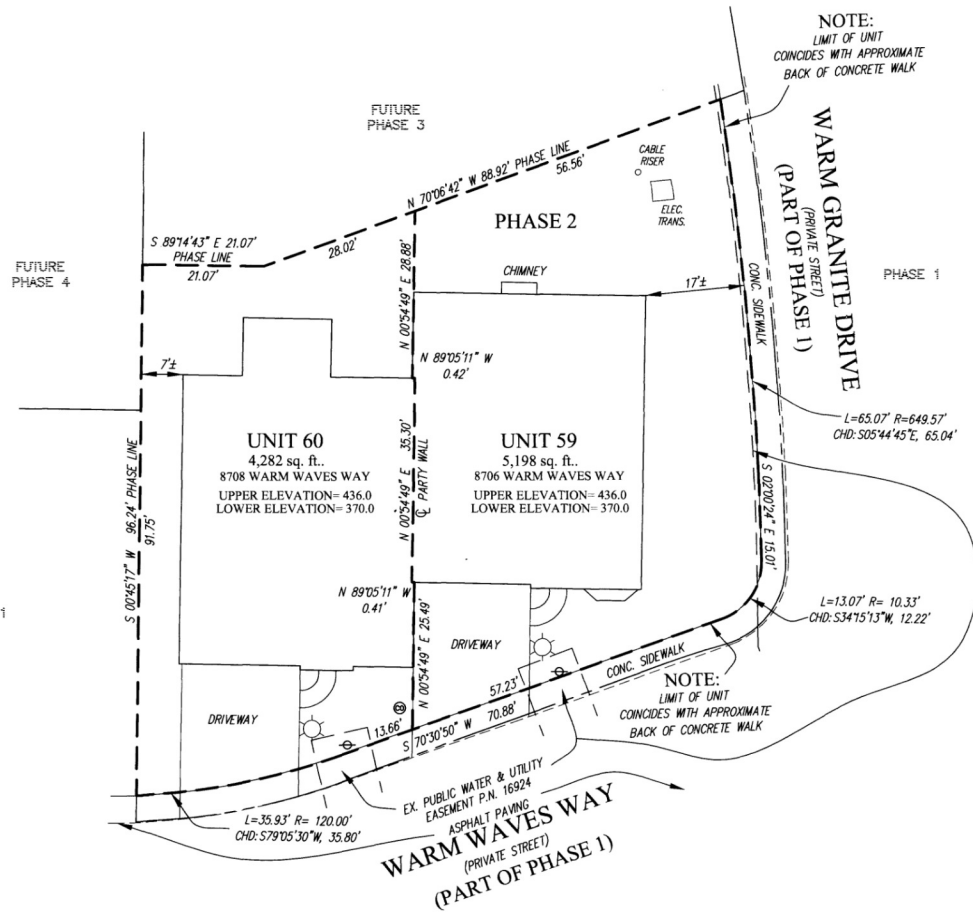
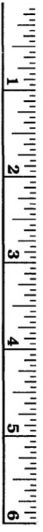
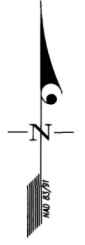


PLAT-M.D.R. NO. 17415



JUL 28 2005
Handwritten signature 7/27/05

- LEGEND**
- FIRE HYDRANT
 - WATER VALVE
 - STORM DRAIN MANHOLE
 - STORM DRAIN INLET
 - CLEAN OUT
 - LIGHT POLE
 - SEWER MANHOLE

CONDOMINIUM PLAT
 PHASE 2 - UNIT PLAN
**THE VILLAS AT SNOWDEN
 OVERLOOK CONDOMINIUM**

GUILFORD ELECTION DISTRICT NO. 6
 HOWARD COUNTY, MARYLAND
 SCALE: 1"=15' JULY 2005

SHEET 3 OF 3

GLW GUTSCHICK LITTLE & WEBER, P.A.
 CIVIL ENGINEERS, LAND SURVEYORS, LAND PLANNERS, LANDSCAPE ARCHITECTS
 3909 NATIONAL DRIVE - SUITE 250 - BURTONSVILLE OFFICE PARK
 BURTONSVILLE, MARYLAND 20866
 TEL: 301-421-4024 BALT: 410-880-1820 DC/VA: 301-389-2524 FAX: 301-421-4186

DRAWN BY: *PNC* CHKD. BY: *889* GLW. FILE NO. 04-110

RECORDED: _____
 PLAT NO.: _____

DATE OF LATEST FIELD WORK: JULY 26, 2005

L:\CADD\DRAWINGS\DAT\PLATS\04-11011-FIN-142-P.LDW 7/27/2005 7:54:38 AM EST