

MDR PLAT NO. 17826
 RECEIVED
 FOR RECORD NOV 23 2005

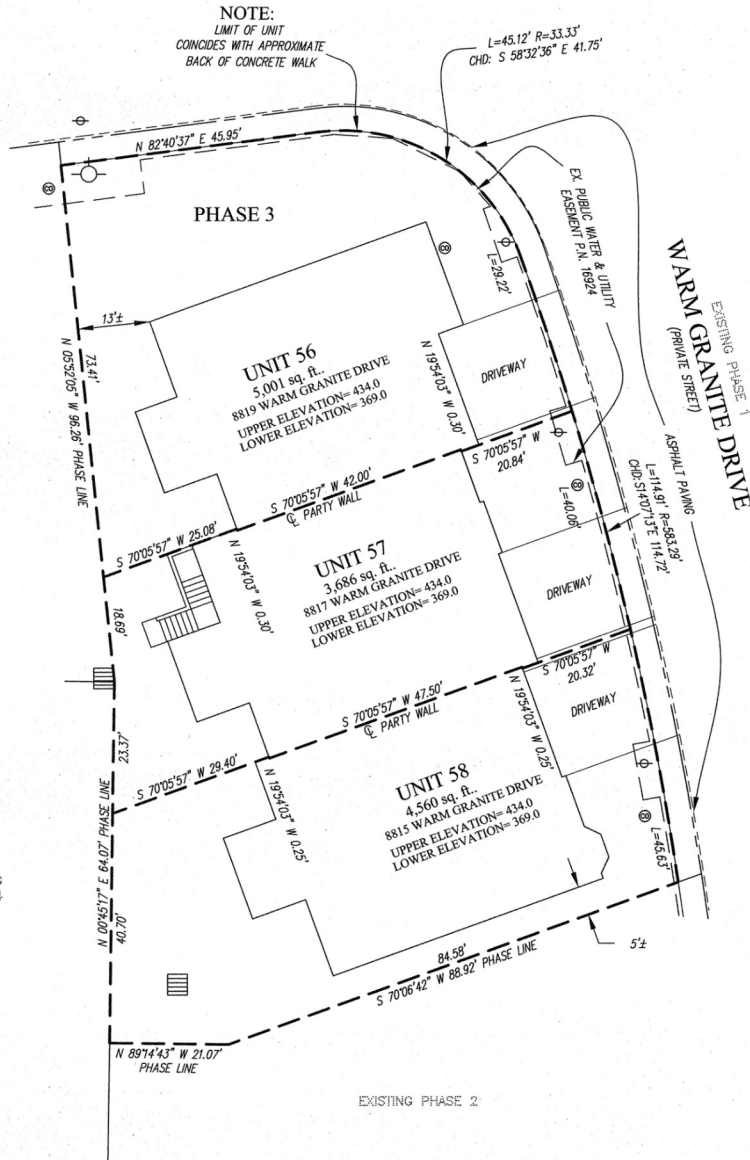


PLAT FEE-A
 PLAT RECORDING
 TOTAL
 Rec'd CH&S Rec'd # 434
 MDR P/R Blk # 388
 Nov 23, 2005 10:45 AM

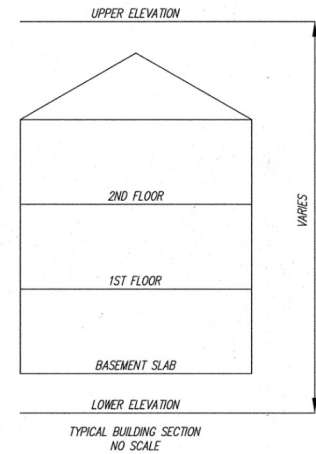
FUTURE
 PHASE 5

EXISTING
 PHASE 4

EXISTING PHASE 2



NOTE: STOOPS AND LEAD WALKS WERE NOT CONSTRUCTED AS OF NOVEMBER 16, 2005



LEGEND

- FIRE HYDRANT
- WATER VALVE
- STORM DRAIN MANHOLE
- STORM DRAIN INLET
- CLEAN OUT
- LIGHT POLE
- SEWER MANHOLE
- GAS VALVE
- YARD INLET

CONDOMINIUM PLAT
 PHASE 3 - UNIT PLAN
 THE VILLAS AT SNOWDEN
 OVERLOOK CONDOMINIUM

GUILFORD ELECTION DISTRICT NO. 6
 HOWARD COUNTY, MARYLAND
 SCALE: 1"=15' NOVEMBER 2005 SHEET 2 OF 3

GLW GUTSCHICK LITTLE & WEBER, P.A.
 CIVIL ENGINEERS, LAND SURVEYORS, LAND PLANNERS, LANDSCAPE ARCHITECTS
 3909 NATIONAL DRIVE - SUITE 250 - BURTONSVILLE OFFICE PARK
 BURTONSVILLE, MARYLAND 20866
 TEL: 301-421-4024 BAL: 410-880-1820 DC/VA: 301-989-2524 FAX: 301-421-4186

DRAWN BY: PWC CHKD. BY: JG G.L.W. FILE NO. 04-110

11-22-05
 P114847 HSA Csu 2125 3259-2

RECORDED: _____
 PLAT NO.: _____

DATE OF LATEST FIELD WORK: NOVEMBER 16, 2005

Maryland State Archives

11/23/05

L:\CADD\DRAWINGS\04110\PLATS\04-110U1-Ph 3A8-R1.2.dwg 11/19/2005 1:37:45 PM EST