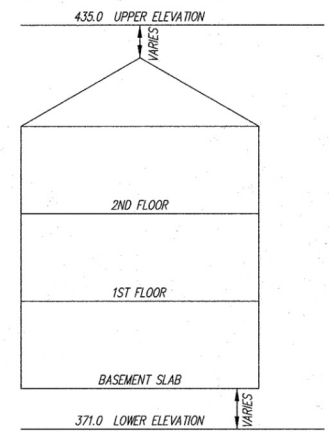


PLAT FEE-A
 PLAT RECORDING
 TOTAL
 HOURS CHARGED
 HOURS PAID
 JUN 14 2006

- LEGEND**
- FIRE HYDRANT
 - WATER VALVE
 - STORM DRAIN MANHOLE
 - STORM DRAIN INLET
 - CLEAN OUT
 - LIGHT POLE
 - SEWER MANHOLE
 - GAS VALVE
 - YARD INLET

NOTE:
 LIMIT OF UNIT
 COINCIDES WITH APPROXIMATE
 BACK OF CONCRETE WALK

MDR PLAT NO. 18348
 RECEIVED JUN 14 2006
 FOR RECORD



TYPICAL BUILDING SECTION
 NO SCALE

6-14-06

CONDOMINIUM PLAT
 PHASE 23 - UNIT PLAN
 THE VILLAS AT SNOWDEN
 OVERLOOK CONDOMINIUM

GULFORD ELECTION DISTRICT NO. 6
 HOWARD COUNTY, MARYLAND
 SCALE: 1"=15' JUNE 2006 SHEET 3 OF 3

GLW GUTSCHICK LITTLE & WEBER, P.A.
 CIVIL ENGINEERS, LAND SURVEYORS, LAND PLANNERS, LANDSCAPE ARCHITECTS
 3909 NATIONAL DRIVE - SUITE 250 - BURTONSVILLE OFFICE PARK
 BURTONSVILLE, MARYLAND 20866
 TEL: 301-421-4024 BAL: 410-880-1820 DC/VA: 301-989-2524 FAX: 301-421-4186

DRAWN BY: PWC CHKD. BY: TTB G.L.W. FILE NO. 04-110

RECORDED: _____
 PLAT NO.: _____

DATE OF LATEST FIELD WORK: JUNE 2, 2006

125917 MSA CSU 2125 3506-3