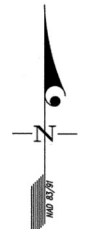
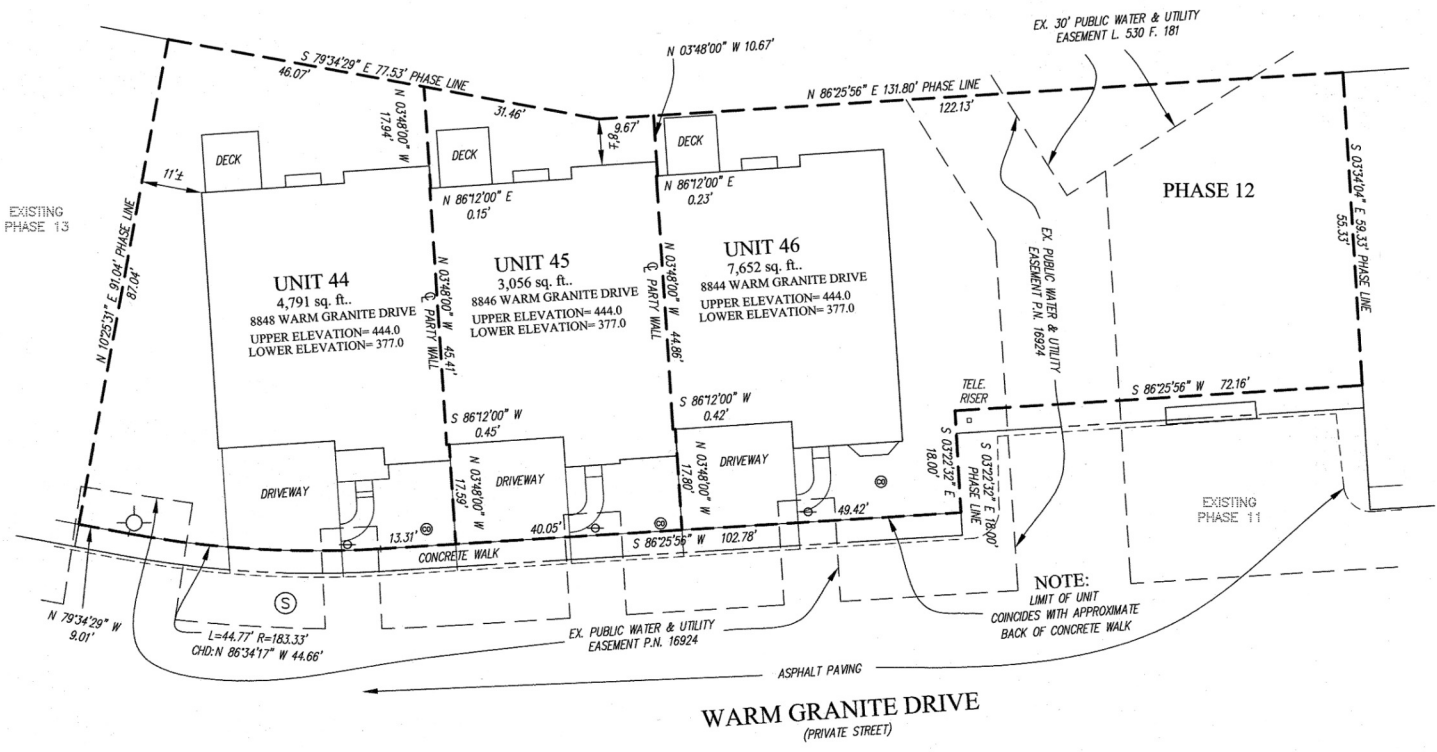
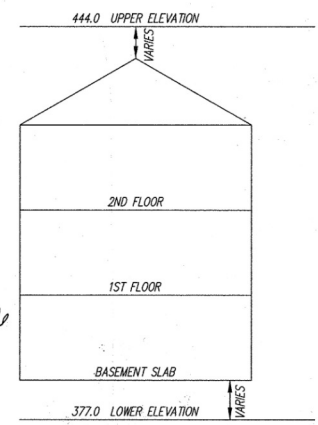


6  
5  
4  
3  
2  
1  
Manfred Stier Architects



PLAT FEE-A  
PLAT RECORDIN  
TOTAL  
Res# 6 Rpt# 463  
MDR HEN BLK # 107  
Sep 22, 2006 11:42

MDR PLAT NO. 18546  
RECEIVED SEP 22 2006  
FOR RECORD



*Handwritten signature: Howard Little 9/22/06*

CONDOMINIUM PLAT  
PHASE 12 - UNIT PLAN  
THE VILLAS AT SNOWDEN  
OVERLOOK CONDOMINIUM

CULFORD ELECTION DISTRICT NO. 6  
HOWARD COUNTY, MARYLAND  
SCALE: 1"=15' SEPTEMBER 2006 SHEET 2 OF 2

**GLW** GUTSCHICK LITTLE & WEBER, P.A.  
CIVIL ENGINEERS, LAND SURVEYORS, LAND PLANNERS, LANDSCAPE ARCHITECTS  
3909 NATIONAL DRIVE - SUITE 250 - BURTONSVILLE OFFICE PARK  
BURTONSVILLE, MARYLAND 20866  
TEL: 301-421-4024 BALT: 410-880-1820 DC/VA: 301-989-2524 FAX: 301-421-4186

DRAWN BY: PML CHKD BY: TBY G.L.W. FILE NO. 04-110

- LEGEND**
- FIRE HYDRANT
  - WATER VALVE
  - STORM DRAIN MANHOLE
  - STORM DRAIN INLET
  - CLEAN OUT
  - LIGHT POLE
  - SEWER MANHOLE
  - GAS VALVE
  - YARD INLET

RECORDED: \_\_\_\_\_  
PLAT NO.: \_\_\_\_\_

DATE OF LATEST FIELD WORK: SEPTEMBER 13, 2006

P129745 HSA CSU 2123 3588-2

L:\CADD\DRAWINGS\04110\PLATS\04-110\T-12-M2.dwg 9/18/2006 1:59:37 PM EST