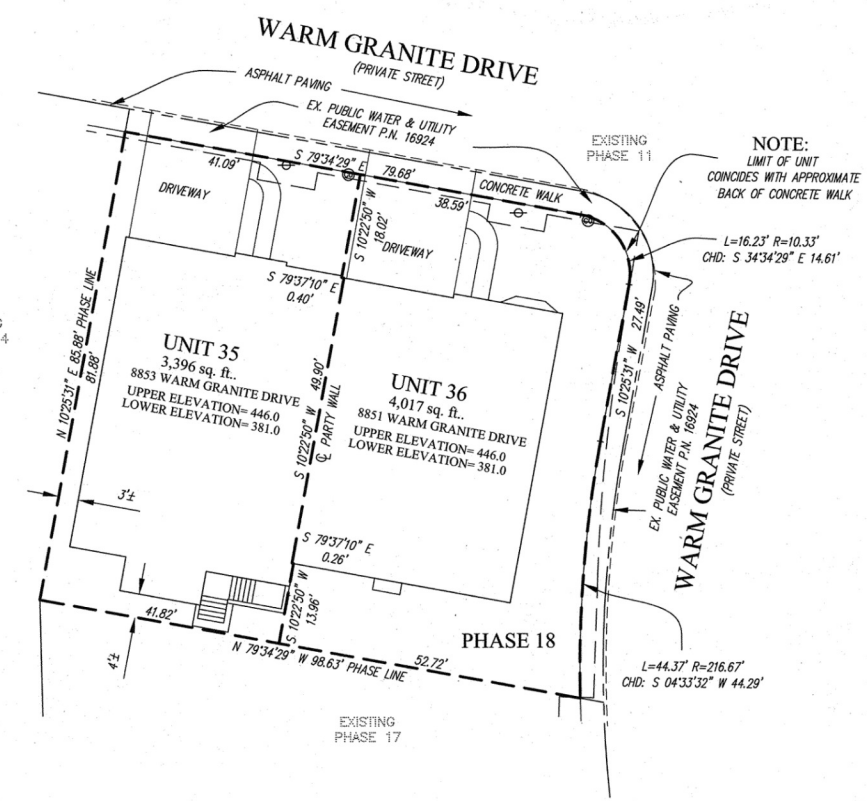


Marland State Archives

C:\CADD\DRAWINGS\0410\PLATS\04-1100T-Pl 15.18-PL3.dwg 7/14/2006 9:59:12 AM EST

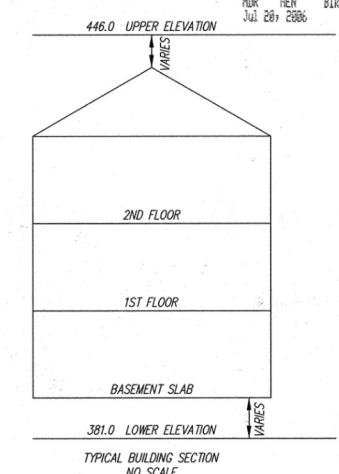


NOTE:
LIMIT OF UNIT
COINCIDES WITH APPROXIMATE
BACK OF CONCRETE WALK

L=16.23' R=10.33'
CHD: S 34°34'29" E 14.61'

MDR PLAT NO. 18437
RECEIVED JUL 20 2006
FOR RECORD

PLAT FEE-A
PLAT RECORDING
TOTAL
Rough 6 RCP# 448
HR. HEN Blk # 731
Jul 20, 2006 Bl# 57



- LEGEND
- FIRE HYDRANT
 - WATER VALVE
 - STORM DRAIN MANHOLE
 - STORM DRAIN INLET
 - CLEAN OUT
 - LIGHT POLE
 - SEWER MANHOLE
 - GAS VALVE
 - YARD INLET

7/20/06

CONDOMINIUM PLAT
PHASE 18 - UNIT PLAN
THE VILLAS AT SNOWDEN
OVERLOOK CONDOMINIUM

GUILFORD ELECTION DISTRICT NO. 6
HOWARD COUNTY, MARYLAND
SCALE: 1"=15' JULY 2006 SHEET 3 OF 3

GLW GUTSCHICK LITTLE & WEBER, P.A.
CIVIL ENGINEERS, LAND SURVEYORS, LAND PLANNERS, LANDSCAPE ARCHITECTS
3909 NATIONAL DRIVE - SUITE 250 - BURTONSVILLE OFFICE PARK
BURTONSVILLE, MARYLAND 20866
TEL: 301-421-4024 BALT: 410-880-1820 DC/VA: 301-989-2524 FAX: 301-421-4186

RECORDED: _____
PLAT NO.: _____

DATE OF LATEST FIELD WORK: JUNE 30, 2006

DRAWN BY: *pmv* CHKD. BY: *tw* G.L.W. FILE NO. 04-110

P12667 MSA CSU 2125 3595.3