

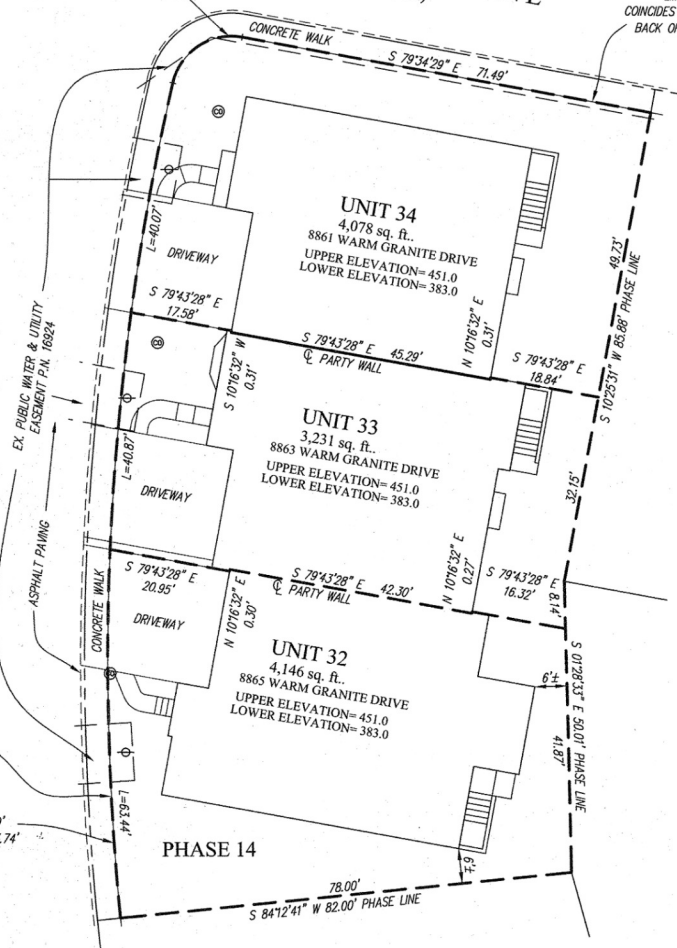
Maryland State Archives  
 L:\CADD\DRAWINGS\04110\PLATS\04-11001-PH 14&23-B.2.dwg 6/8/2006 1:17:06 PM EST

$L=15.79'$   $R=10.33'$   
 CHD: N 56°38'56" E 14.29'

EXISTING PHASE 11  
**WARM GRANITE DRIVE**  
 (PRIVATE STREET)

NOTE:  
 LIMIT OF UNIT  
 COINCIDES WITH APPROXIMATE  
 BACK OF CONCRETE WALK

EXISTING PHASE 11  
**WARM GRANITE DRIVE**  
 (PRIVATE STREET)



NOTE:  
 LIMIT OF UNIT  
 COINCIDES WITH APPROXIMATE  
 BACK OF CONCRETE WALK

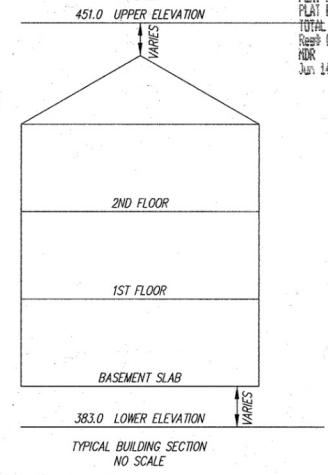
$L=144.38'$   $R=443.29'$   
 CHD: N 03°32'31" E 143.74'

PHASE 14

EXISTING PHASE 15

FUTURE PHASE 18

EXISTING PHASE 17



PLAT FEE-A  
 PLAT RECORDING  
 TOTAL  
 Rec'd CHES \$200.00  
 MDR PAT \$125.00  
 Jun 14, 2006 BL:14

- LEGEND**
- FIRE HYDRANT
  - WATER VALVE
  - STORM DRAIN MANHOLE
  - STORM DRAIN INLET
  - CLEAN OUT
  - LIGHT POLE
  - SEWER MANHOLE
  - GAS VALVE
  - YARD INLET

**MDR PLAT NO. 18347**  
 RECEIVED JUN 14 2006  
 FOR RECORD

6-14-06

CONDOMINIUM PLAT  
 PHASE 14 - UNIT PLAN  
**THE VILLAS AT SNOWDEN  
 OVERLOOK CONDOMINIUM**

GULFORD ELECTION DISTRICT NO. 6  
 HOWARD COUNTY, MARYLAND  
 SCALE: 1"=15' JUNE 2006 SHEET 2 OF 3

**GLW GUTSCHICK LITTLE & WEBER, P.A.**  
 CIVIL ENGINEERS, LAND SURVEYORS, LAND PLANNERS, LANDSCAPE ARCHITECTS  
 3909 NATIONAL DRIVE - SUITE 250 - BURTONSVILLE OFFICE PARK  
 BURTONSVILLE, MARYLAND 20866  
 TEL: 301-421-4024 BAL: 410-880-1820 DC/VA: 301-989-2524 FAX: 301-421-4186

RECORDED: \_\_\_\_\_  
 PLAT NO.: \_\_\_\_\_

DATE OF LATEST FIELD WORK: MAY 25, 2006

DRAWN BY: PML CHKD. BY: TBY G.L.W. FILE NO. 04-110

2150410 MSA CSM 2125 3506-2