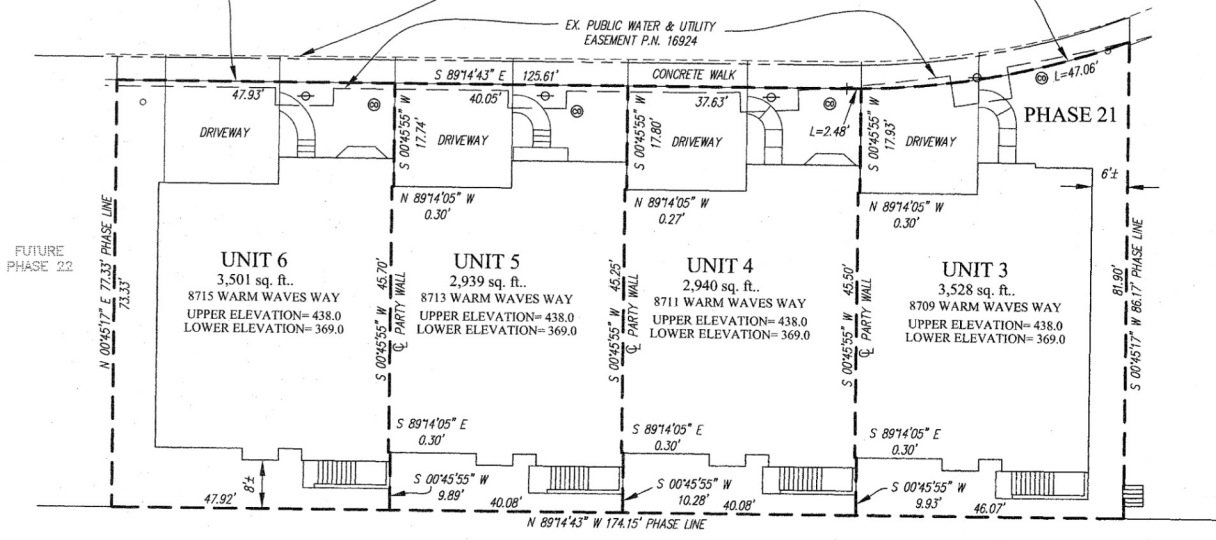




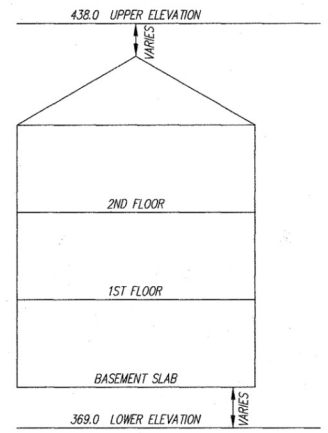
NOTE:
LIMIT OF UNIT
COINCIDES WITH APPROXIMATE
BACK OF CONCRETE WALK

WARM WAVES WAY
(PRIVATE STREET)

L=49.54' R=141.67'
CHD: N 80°44'14" E 49.29'



PLAT FEE-A
PLAT RECORDING
TOTAL
Revised 6 Reprint # 432
FOR HEN BIK # 182
May 22, 2006 83441



- LEGEND
- FIRE HYDRANT
 - WATER VALVE
 - STORM DRAIN MANHOLE
 - STORM DRAIN INLET
 - CLEAN OUT
 - LIGHT POLE
 - SEWER MANHOLE
 - GAS VALVE
 - YARD INLET

TYPICAL BUILDING SECTION
NO SCALE

Handwritten signature
5/22/06

CONDOMINIUM PLAT
PHASE 21- UNIT PLAN
THE VILLAS AT SNOWDEN
OVERLOOK CONDOMINIUM

GUILFORD ELECTION DISTRICT NO. 6
HOWARD COUNTY, MARYLAND
SCALE: 1"=15' MAY 2006 SHEET 5 OF 5

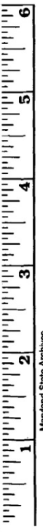
GLW GUTSCHICK LITTLE & WEBER, P.A.
CIVIL ENGINEERS, LAND SURVEYORS, LAND PLANNERS, LANDSCAPE ARCHITECTS
3909 NATIONAL DRIVE - SUITE 250 - BURTONSVILLE OFFICE PARK
BURTONSVILLE, MARYLAND 20886
TEL: 301-421-4024 BALT: 410-880-1820 DC/VA: 301-989-2524 FAX: 301-421-4186

DRAWN BY: *PWC* CHKO. BY: *887* G.L.W. FILE NO. 04-110

MDR PLAT NO. 18287
RECEIVED MAY 22 2006
FOR RECORD

DATE OF LATEST FIELD WORK: MAY 15, 2006

Handwritten: P124320 HSA Csu 2125 3470-5



Maryland State Archives