

FUTURE PHASE 14

PHASE 15

PHASE 17

FUTURE PHASE 16

EXISTING PHASE 11

NOTE:
LIMIT OF UNIT
COINCIDES WITH APPROXIMATE
BACK OF CONCRETE WALK

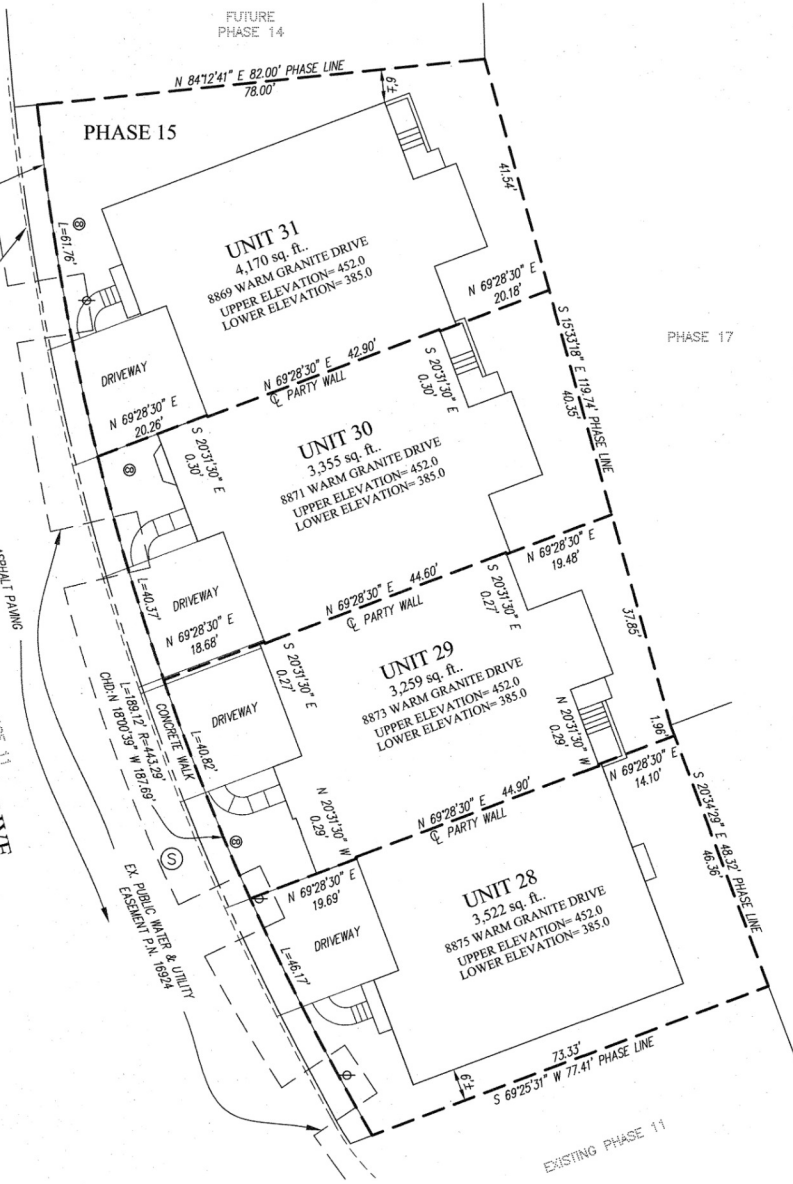
WARM GRANITE DRIVE
(PRIVATE STREET)

ASPHALT PAVING

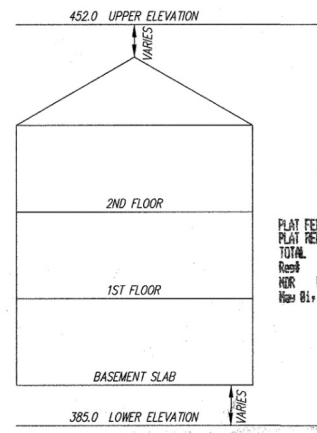
EXISTING PHASE 11

DATE OF LATEST FIELD WORK: APRIL 12, 2006

RECORDED: _____
PLAT NO.: _____



MDR PLAT NO. 18236
RECEIVED MAY 01 2006
FOR RECORD



PLAT FEE-A
PLAT REDUCTION
TOTAL
Reps 6 Plat # 428
HER MEN DLK # 113
Her Bl # 2886 Bl # 52

- LEGEND**
- FIRE HYDRANT
 - WATER VALVE
 - STORM DRAIN MANHOLE
 - STORM DRAIN INLET
 - CLEAN OUT
 - LIGHT POLE
 - SEWER MANHOLE
 - GAS VALVE
 - YARD INLET

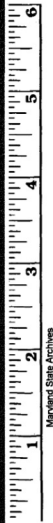
CONDOMINIUM PLAT
PHASE 15 - UNIT PLAN
THE VILLAS AT SNOWDEN
OVERLOOK CONDOMINIUM

GUILFORD ELECTION DISTRICT NO. 6
HOWARD COUNTY, MARYLAND
SCALE: 1"=15' APRIL 2006 SHEET 2 OF 3

GLW GUTSCHICK LITTLE & WEBER, P.A.
CIVIL ENGINEERS, LAND SURVEYORS, LAND PLANNERS, LANDSCAPE ARCHITECTS
3909 NATIONAL DRIVE - SUITE 250 - BURTONSVILLE OFFICE PARK
BURTONSVILLE, MARYLAND 20886
TEL: 301-421-4024 BAL: 410-880-1820 DC/VA: 301-989-2524 FAX: 301-421-4186

DRAWN BY: *PWC* CHKD. BY: *TSJ* G.L.W. FILE NO. 04-110

Howard Little
5/1/06



P24344

MSA Csu 2125 3449-2

L:\CAD\DRAWINGS\04110\PLANS\04-110\15-UNIT-F-1101-F-PL15817-PL2.dwg 4/24/2006 1:29:05 PM EST