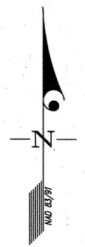
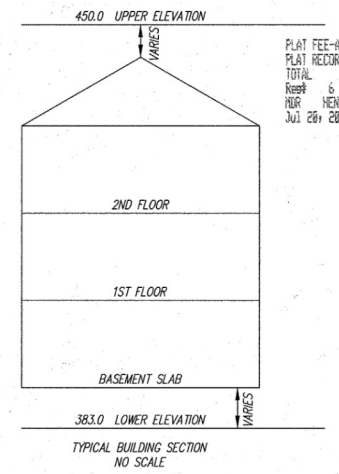
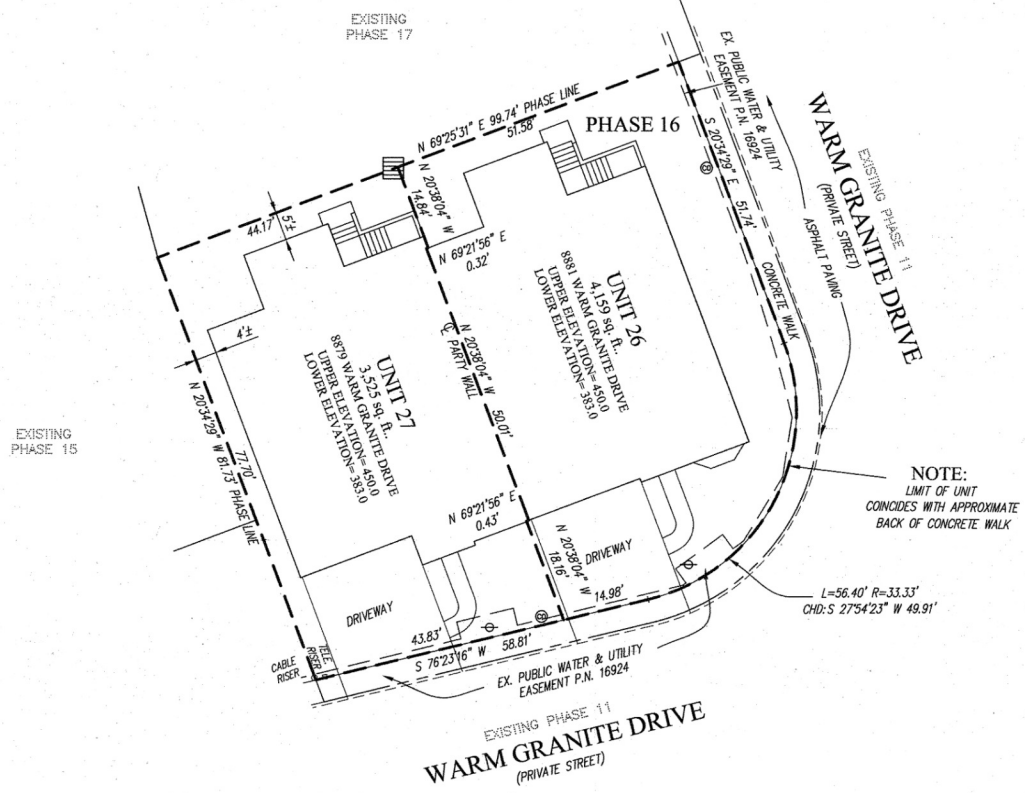


Maryland State Archives

L:\CADD\ORSHANINS\04110\PLAT15\04-11001-15-16-15-PL2.dwg 7/14/2006 9:58:08 AM EST



MDR PLAT NO. 18436
 RECEIVED
 FOR RECORD **JUL 20 2006**



PLAT FEE-A
 PLAT RECORDING
 TOTAL
 REC'D 6 Rec'd \$ 44.00
 PER REC'D 681.75
 JUL 20, 2006 611.75

- LEGEND**
- FIRE HYDRANT
 - WATER VALVE
 - STORM DRAIN MANHOLE
 - STORM DRAIN INLET
 - CLEAN OUT
 - LIGHT POLE
 - SEWER MANHOLE
 - GAS VALVE
 - YARD INLET

**CONDOMINIUM PLAT
 PHASE 16 - UNIT PLAN
 THE VILLAS AT SNOWDEN
 OVERLOOK CONDOMINIUM**

GUILFORD ELECTION DISTRICT NO. 6
 HOWARD COUNTY, MARYLAND
 SCALE: 1"=15' JULY 2006 SHEET 2 OF 3

GLW GUTSCHICK LITTLE & WEBER, P.A.
 CIVIL ENGINEERS, LAND SURVEYORS, LAND PLANNERS, LANDSCAPE ARCHITECTS
 3909 NATIONAL DRIVE - SUITE 250 - BURTONSVILLE OFFICE PARK
 BURTONSVILLE, MARYLAND 20886
 TEL: 301-421-4024 BALT: 410-880-1820 DC/VA: 301-989-2524 FAX: 301-421-4186

DRAWN BY: *mc* CHKD. BY: *tw* G.L.W. FILE NO. 04-110

RECORDED: _____
 PLAT NO.: _____

DATE OF LATEST FIELD WORK: JUNE 30, 2006

120966 HSA CSU 2125 3535-2