

PHASE 19

EXISTING
PHASE 10

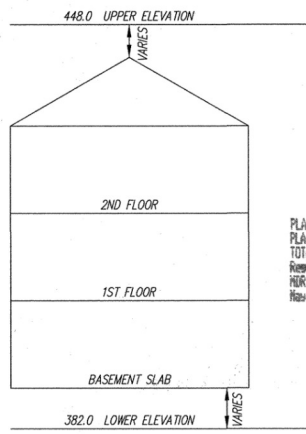
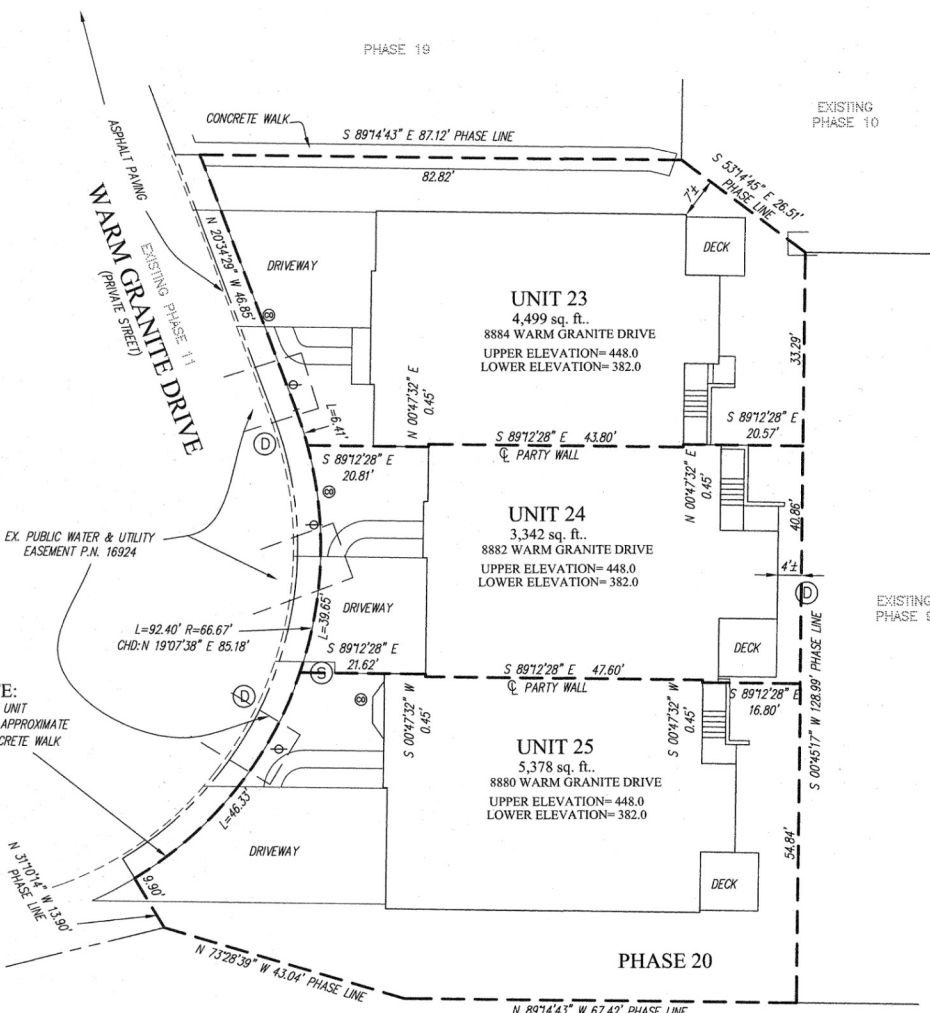
EXISTING
PHASE 9

PHASE 20

WARM GRANITE DRIVE
(PRIVATE STREET)

EX. PUBLIC WATER & UTILITY
EASEMENT P.N. 16924

NOTE:
LIMIT OF UNIT
COINCIDES WITH APPROXIMATE
BACK OF CONCRETE WALK



PLAT FEE-A
PLAT RECORDING
TOTAL
Rm# 6 Rcpt # 433
HR PEN Blk # 181
Res 22 # 2086 83441

- LEGEND**
- FIRE HYDRANT
 - WATER VALVE
 - STORM DRAIN MANHOLE
 - STORM DRAIN INLET
 - CLEAN OUT
 - LIGHT POLE
 - SEWER MANHOLE
 - GAS VALVE
 - YARD INLET

Handwritten signature
5/22/06

CONDOMINIUM PLAT
PHASE 20 - UNIT PLAN
THE VILLAS AT SNOWDEN
OVERLOOK CONDOMINIUM

GUILFORD ELECTION DISTRICT NO. 6
HOWARD COUNTY, MARYLAND
SCALE: 1"=15' MAY 2006 SHEET 4 OF 5

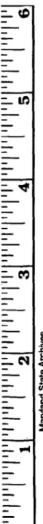
GLW GUTSCHICK LITTLE & WEBER, P.A.
CIVIL ENGINEERS, LAND SURVEYORS, LAND PLANNERS, LANDSCAPE ARCHITECTS
3909 NATIONAL DRIVE - SUITE 250 - BURTONSVILLE OFFICE PARK
BURTONSVILLE, MARYLAND 20886
TEL: 301-421-4024 BALT: 410-880-1820 DC/VA: 301-588-2524 FAX: 301-421-4186

DRAWN BY: *PWC* CHKD. BY: *TOY* G.L.W. FILE NO. 04-110

MDR PLAT NO. 18286
RECEIVED MAY 22 2006
FOR RECORD

DATE OF LATEST FIELD WORK: APRIL 12, 2006

P124299 USA CSU 2125 3470-4



Maryland State Archives

L:\CAD\DRAWINGS\GATT10\PLATS\04-110\04-110.dwg 5/17/2006 10:58:46 AM EST