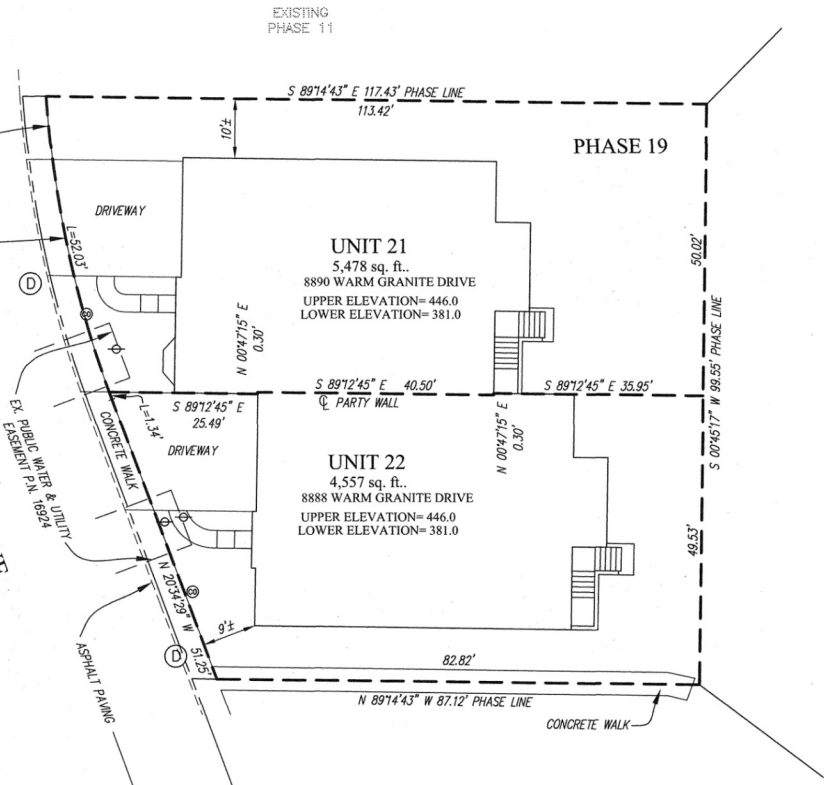




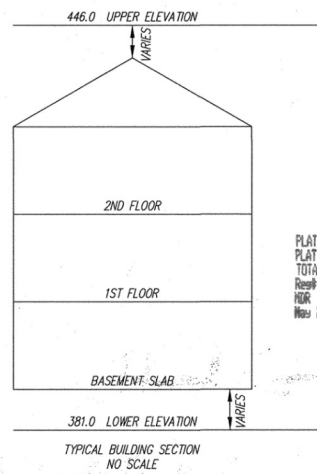
NOTE:  
LIMIT OF UNIT  
COINCIDES WITH APPROXIMATE  
BACK OF CONCRETE WALK

L=53.37' R=183.33'  
CHD: N 121°47'07" W 53.18'

EXISTING PHASE 11  
WARM GRANITE DRIVE  
(PRIVATE STREET)



EXISTING  
PHASE 10



PLAT FEE-A  
PLAT RECORDING  
TOTAL  
Reps: 6 Rept # 4339  
MR: HEN Blk # 181  
Map 22r 2086 03-44

LEGEND

- FIRE HYDRANT
- WATER VALVE
- STORM DRAIN MANHOLE
- STORM DRAIN INLET
- CLEAN OUT
- LIGHT POLE
- SEWER MANHOLE
- GAS VALVE
- YARD INLET

CONDOMINIUM PLAT  
PHASE 19 - UNIT PLAN  
THE VILLAS AT SNOWDEN  
OVERLOOK CONDOMINIUM

GUILFORD ELECTION DISTRICT NO. 6  
HOWARD COUNTY, MARYLAND  
SCALE: 1"=15' MAY 2006 SHEET 3 OF 5

**GLW** GUTSCHICK LITTLE & WEBER, P.A.  
CIVIL ENGINEERS, LAND SURVEYORS, LAND PLANNERS, LANDSCAPE ARCHITECTS  
3909 NATIONAL DRIVE - SUITE 250 - BURTONSVILLE OFFICE PARK  
BURTONSVILLE, MARYLAND 20886  
TEL: 301-421-4024 BAL: 410-880-1820 DC/VA: 301-989-2524 FAX: 301-421-4186

DRAWN BY: *lwc* CHKD. BY: *tw* G.L.W. FILE NO. 04-110

MDR PLAT NO. 18285  
RECEIVED MAY 22 2006  
FOR RECORD

DATE OF LATEST FIELD WORK: APRIL 12, 2006

*Plat 208* *HSA* *CDU 2125 3470-3*



Maryland State Archives

L:\CADD\DRAWINGS\0410\PLATS\04-110\1-19.dwg 5/17/2006 10:53:02 AM EST