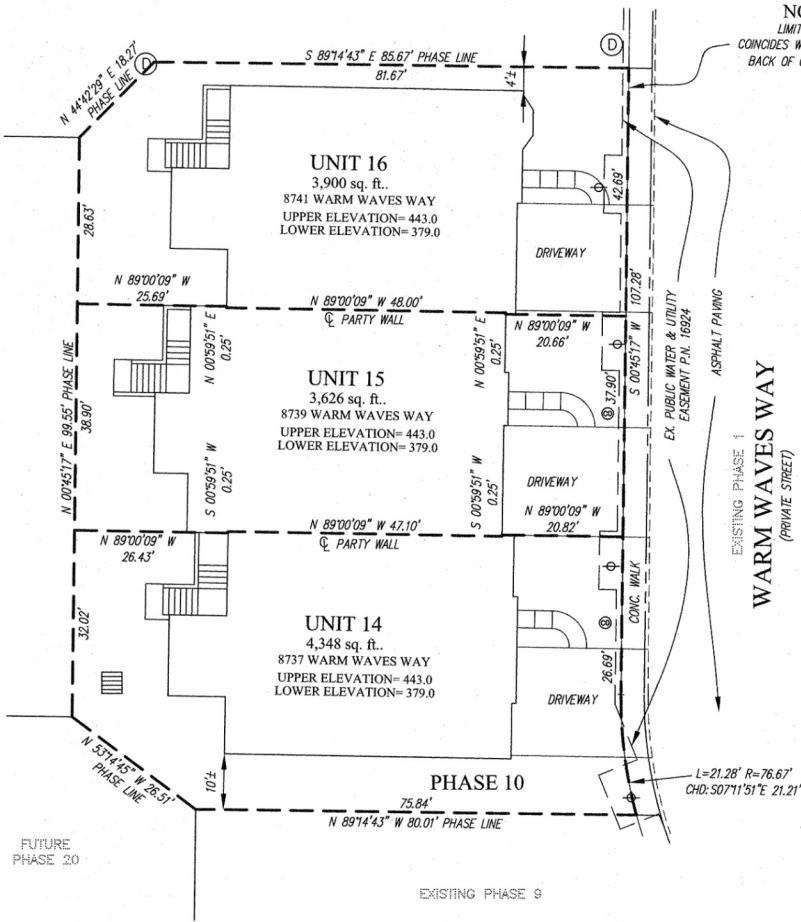


FUTURE  
 PHASE 11

FUTURE  
 PHASE 19



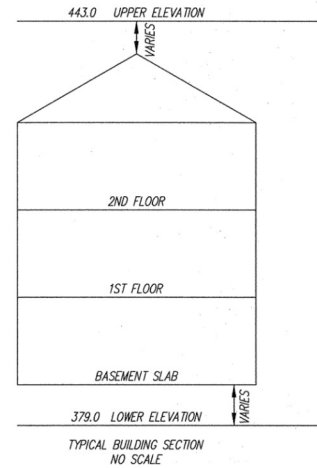
NOTE:  
 LIMIT OF UNIT  
 COINCIDES WITH APPROXIMATE  
 BACK OF CONCRETE WALK

EXISTING PHASE 1  
 WARM WAVES WAY  
 (PRIVATE STREET)

FUTURE  
 PHASE 20

EXISTING PHASE 9

- LEGEND**
- FIRE HYDRANT
  - WATER VALVE
  - STORM DRAIN MANHOLE
  - STORM DRAIN INLET
  - CLEAN OUT
  - LIGHT POLE
  - SEWER MANHOLE
  - GAS VALVE
  - YARD INLET



*Howard Leeman*  
 2-15-06

CONDOMINIUM PLAT  
 PHASE 10 - UNIT PLAN  
 THE VILLAS AT SNOWDEN  
 OVERLOOK CONDOMINIUM

GULFORD ELECTION DISTRICT NO. 6  
 HOWARD COUNTY, MARYLAND  
 SCALE: 1"=15' FEBRUARY 2006 SHEET 3 OF 3

**GLW** GUTSCHICK LITTLE & WEBER, P.A.  
 CIVIL ENGINEERS, LAND SURVEYORS, LAND PLANNERS, LANDSCAPE ARCHITECTS  
 3909 NATIONAL DRIVE - SUITE 250 - BURTONSVILLE OFFICE PARK  
 BURTONSVILLE, MARYLAND 20866  
 TEL: 301-421-4024 BALT: 410-880-1820 DC/VA: 301-989-2524 FAX: 301-421-4186

DRAWN BY: *pw/c* CHKD. BY: *TSY* G.L.W. FILE NO. 04-110

RECORDED: \_\_\_\_\_  
 PLAT NO.: \_\_\_\_\_

DATE OF LATEST FIELD WORK: FEBRUARY 2, 2006



P119938 MSA CSU Q125 3336-3

PLAT FILED  
 PLAT RECORDS  
 TOTAL  
 INDEXED  
 FOR  
 FILED  
 FEB 16 2006  
 REC'D # 368  
 REC # 175  
 11-28



L:\CAD\DRAWINGS\04110\PLAT10\PHASE 10 UNIT PLAN.dwg 2/10/2006 7:03:46 AM EST