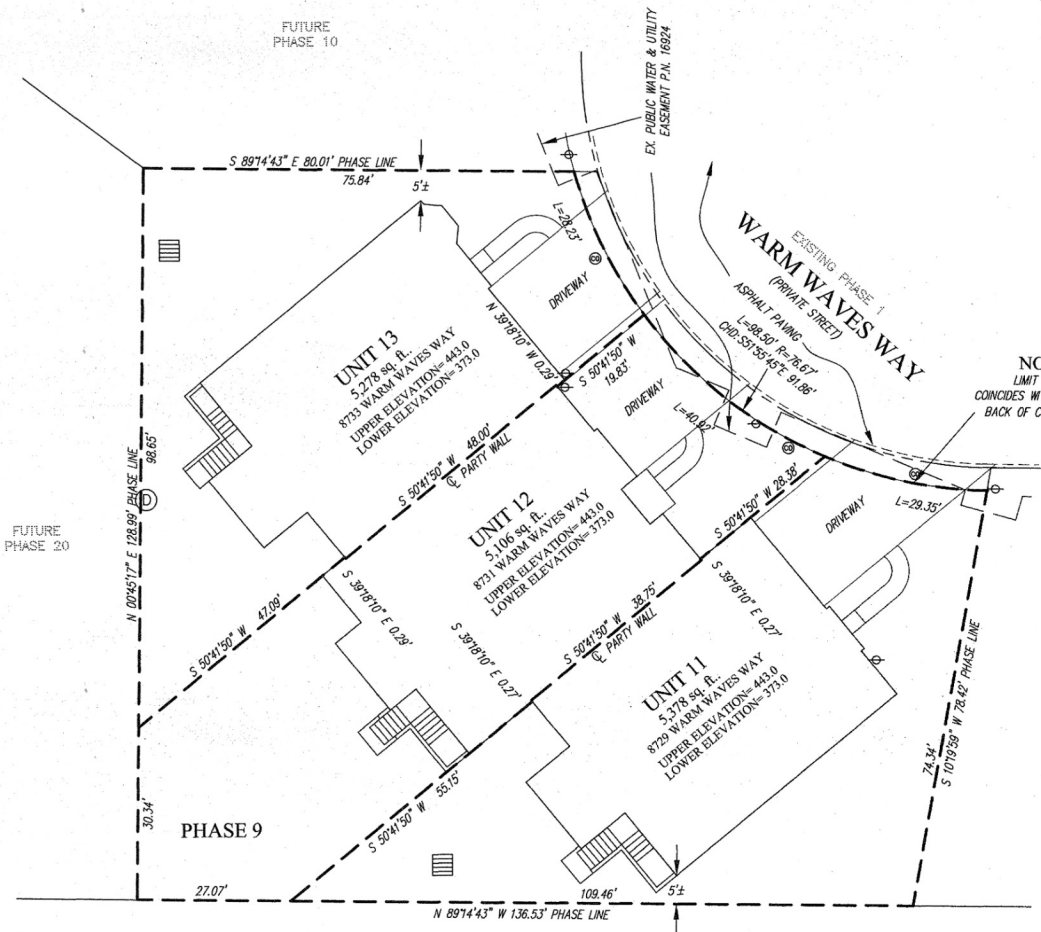
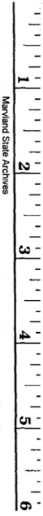


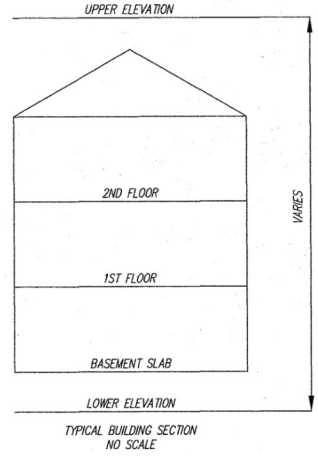
MDR PLAT NO.17827  
RECEIVED  
FOR RECORD NOV 23 2005



PLAT FEE-A  
PLAT RECORDING  
TOTAL  
FEE \$ 42.00  
HUR. CHRG. Blk # 388  
Nov 23, 2005 10:53



FUTURE PHASE 22



- LEGEND**
- FIRE HYDRANT
  - WATER VALVE
  - STORM DRAIN MANHOLE
  - STORM DRAIN INLET
  - CLEAN OUT
  - LIGHT POLE
  - SEWER MANHOLE
  - GAS VALVE
  - YARD INLET

*Howard Levin* 11-22-05

CONDOMINIUM PLAT  
PHASE 9 - UNIT PLAN  
THE VILLAS AT SNOWDEN  
OVERLOOK CONDOMINIUM

GUILFORD ELECTION DISTRICT NO. 6  
HOWARD COUNTY, MARYLAND  
SCALE: 1"=15' NOVEMBER 2005 SHEET 3 OF 3

**GLW GUTSCHICK LITTLE & WEBER, P.A.**  
CIVIL ENGINEERS, LAND SURVEYORS, LAND PLANNERS, LANDSCAPE ARCHITECTS  
3809 NATIONAL DRIVE - SUITE 250 - BURTONSVILLE OFFICE PARK  
BURTONSVILLE, MARYLAND 20866  
TEL: 301-421-4024 BALT: 410-880-1820 DC/VA: 301-989-2524 FAX: 301-421-4186

DRAWN BY: *PWC* CHKD. BY: *TDY* G.L.W. FILE NO. 04-110

RECORDED: \_\_\_\_\_  
PLAT NO.: \_\_\_\_\_

DATE OF LATEST FIELD WORK: NOVEMBER 16, 2005

411848 MSA Bsu 2125 3254-3

L:\CADD\Drawings\04\10\PLAT\17827\04-11011-PL1.dwg 11/18/2005 11:36:13 PM EST