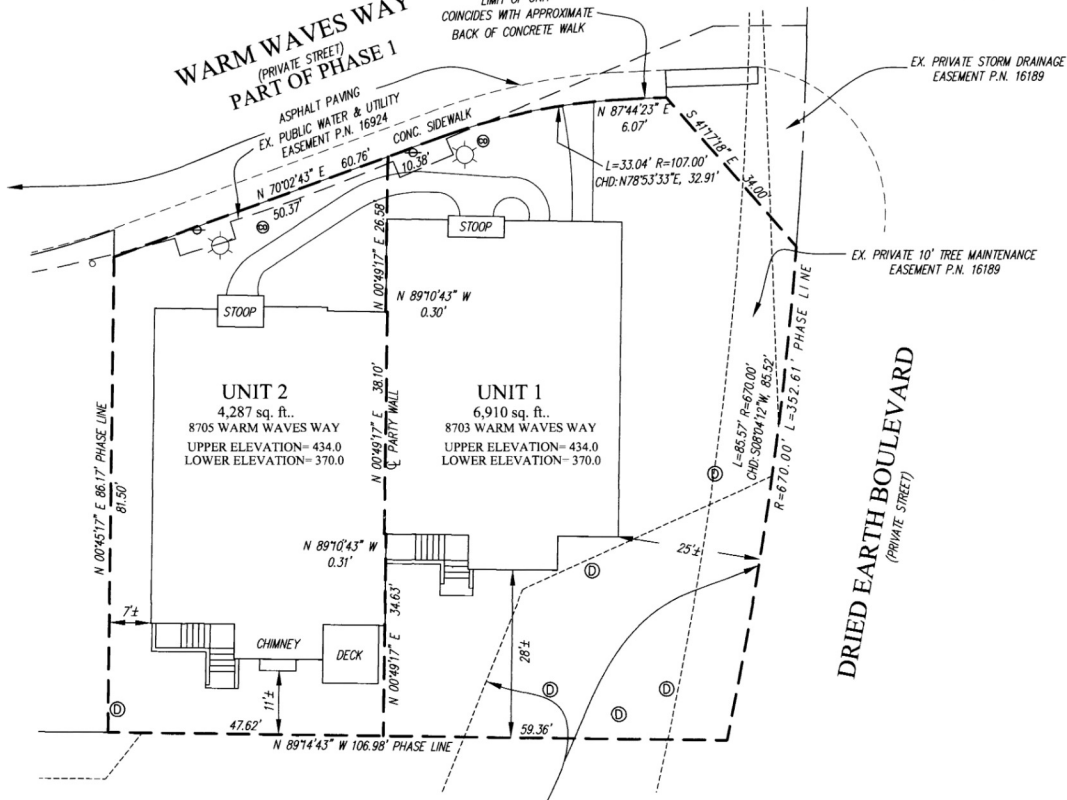


PLAT M.D.R. NO. 17614

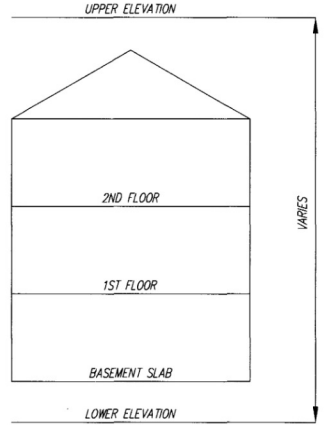


WARM WAVES WAY  
(PRIVATE STREET)  
PART OF PHASE 1

NOTE:  
LIMIT OF UNIT  
COINCIDES WITH APPROXIMATE  
BACK OF CONCRETE WALK



DRIED EARTH BOULEVARD  
(PRIVATE STREET)



EX. PRIVATE STORMWATER MANAGEMENT,  
STORMWATER MANAGEMENT ACCESS, DRAINAGE  
& UTILITY EASEMENT P.N. 16189

- LEGEND
- FIRE HYDRANT
  - WATER VALVE
  - STORM DRAIN MANHOLE
  - STORM DRAIN INLET
  - CLEAN OUT
  - LIGHT POLE
  - SEWER MANHOLE

JUL 28 2005  
Handwritten signature and date

CONDOMINIUM PLAT  
PHASE 1 - UNIT PLAN  
THE VILLAS AT SNOWDEN  
OVERLOOK CONDOMINIUM

GUILFORD ELECTION DISTRICT NO. 6  
HOWARD COUNTY, MARYLAND  
SCALE: 1"=15' JULY 2005

SHEET 2 OF 3

**GLW** GUTSCHICK LITTLE & WEBER, P.A.  
CIVIL ENGINEERS, LAND SURVEYORS, LAND PLANNERS, LANDSCAPE ARCHITECTS  
3909 NATIONAL DRIVE - SUITE 250 - BURTONSVILLE OFFICE PARK  
BURTONSVILLE, MARYLAND 20866  
TEL: 301-421-4024 BALT: 410-880-1820 DC/VA: 301-959-2524 FAX: 301-421-4186

DRAWN BY: *AWC* CHKD. BY: *TSJ* G.L.W. FILE NO. 04-110

p 110199 m3r c3w 2125-3151-2

Vertical scale bar with markings from 1 to 9.

Vertical scale bar with markings from 1 to 9.

RECORDED: \_\_\_\_\_  
PLAT NO.: \_\_\_\_\_

DATE OF LATEST FIELD WORK: JULY 26, 2005

L:\0400\004\000000\04\15\04-11061-F-PR-1&2-P.2.dwg 7/27/2005 7:33:44 AM EST