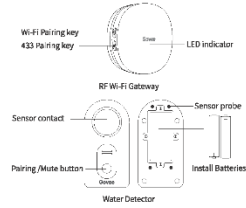


User Manual

MODEL: H5040-H5054

Water Detector With Wi-Fi Gateway

At a glance



RF Wi-Fi Gateway

Wi-Fi pairing button: For pairing network and the gateway.
433 pairing button: For pairing sensor and the gateway.
LED indicator: For reflecting the status of the gateway.

Blue light is always on	Wi-Fi connection is normal
Red light is always on	Wi-Fi connection failed
Blue light flashes slowly	Being in Wi-Fi pairing mode
Red and blue lights flash alternately	Searching for sensor
Blue light flashes quickly	The gateway is connecting

Water Leak Detector

Sensor contact: Detecting dripping
Sensor probe: Detecting water seepage
Pairing/Muting button: Pairing, testing, pausing alerts
Install Batteries: AAA battery *2

Specification

RF Wi-Fi Gateway	
Voltage	AC110-240V 50/60Hz
Wi-Fi frequency	2.4Ghz
Wi-Fi working distance	30m/100ft
RF working frequency	433MHz
RF working distance (in open ground)	100m/328ft

Waterproof rating	IP66
Working voltage	DC 3V
Working system	4.3 system (for above)
Working distance (in open ground)	100m/328ft
Alarm decibel	100dB

Installing your Device

- Plug the gateway into the socket;
- Pull out the battery insulation sheet of sensor;
- Place the sensor.



Govee Home App

What you need:

- A Wi-Fi router supporting the 2.4GHz (not 5 GHz) and 802.11 b/g/n bands. Please check your network information before you try to connect.



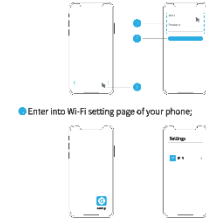
Download the GoveeHome app from the App Store (iOS devices) or Google Play (Android devices).

Connecting to a Wi-Fi Network

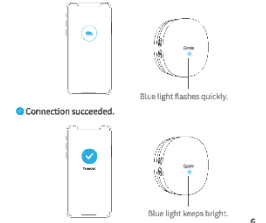
- Note:** Please make sure the Wi-Fi network is 2.4GHz and 802.11 b/g/n bands before you start to connect gateway to the network.
- Connect your phone with family Wi-Fi network first;
 - Open the app, tap "+" icon at the top right corner and select "H5040" or "H5054";



Set family Wi-Fi information;



Return to APP;



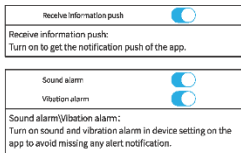
Connection failed.



Please recheck the above steps and try again.

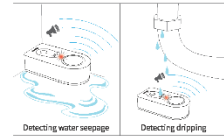
Using your device

Controlling your devices with the Govee-Home app

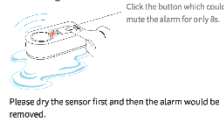


Detecting dripping

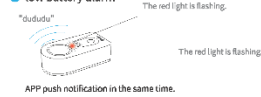
When detecting dripping or seeping water on the ground, the product will emit 100db alarm, APP will also push notification in the same time.



Removing the alarm



low battery alarm



Add sensor

Please refer to the following steps to add sensor or re-add sensor back:

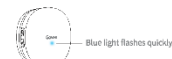
1. Gateway enters into the pairing mode.



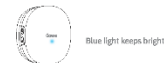
2. Sensor sends the pairing signal.



Gateway receives the signal.



Connection succeeded.



Attention:

- a. If you have not paired the gateway and sensor successfully within 30s, the gateway indicator will turn blue automatically and flash quickly, and then exit the pairing mode;
 - b. If the connection fails, please carefully check the above steps and repeat the attempts.
2. The sensors do not work?
 - a. Pull out the insulation sheet before using.
 - b. Check the battery capacity.
 - c. Check if the sensor installed correctly.
 3. The app alarm is delayed or no alarm?
 - a. Turn on the relevant permissions to the "GoveeHome" APP
 - b. Shorten the distance and reduce the barriers between the sensor and gateway.

Troubleshooting and Warning

Troubleshooting

1. The gateway could not be connected to the Wi-Fi network or the connection is unstable?
 - a. Product supports only 2.4 GHz (not 5 GHz) network.
 - b. Check the name of the network and the password. Please try to avoid special characters.
 - c. The device should be placed within the coverage of the router signal. Please keep the distance between the gateway and the router within 30 meters (100ft).
 - d. Reduce barriers like metal door or multiple / thick walls; gateway and the router within 30 meters (100ft).

Warning

1. Please ensure that the product works within the specified temperature and humidity range.
2. Please do not violently disassemble the product.

Customer Service

- Warranty: 12-Month Limited Warranty
 - Support: Lifetime Technical Support
 - Email: support@govee.com
 - Official Website: www.govee.com
- [f @Govee](#)
[@Govee](#)
[@Govee](#)
[@Goveeofficial](#)

FCC STATEMENT

This device complies with Part 15 of the FCC Rules. Operation is subject to the following two conditions: (1) This device may not cause harmful interference, and (2) This device must accept any interference received, including interference that may cause undesired operation. Warning: Changes or modifications not expressly approved by the party responsible for compliance could void the user's authority to operate the equipment.

NOTE: This equipment has been tested and found to comply with the limits for a Class B digital device, pursuant to Part 15 of the FCC Rules.

These limits are designed to provide reasonable protection against harmful interference in a residential installation. This equipment generates uses and can radiate radio frequency energy and, if not installed and used in accordance with the instructions, may cause harmful interference to radio communications. However, there is no guarantee that interference will not occur in a particular installation. If this equipment does cause harmful interference to radio or television reception, which can be determined by turning the equipment off and on, the user is encouraged to try to correct the interference by one or more of the following measures:

1. Reorient or relocate the receiving antenna.
2. Increase the separation between the equipment and receiver.
3. Connect the equipment into an outlet on a circuit different from that to which the receiver is connected.
4. Consult the dealer or an experienced radio/TV technician for help.