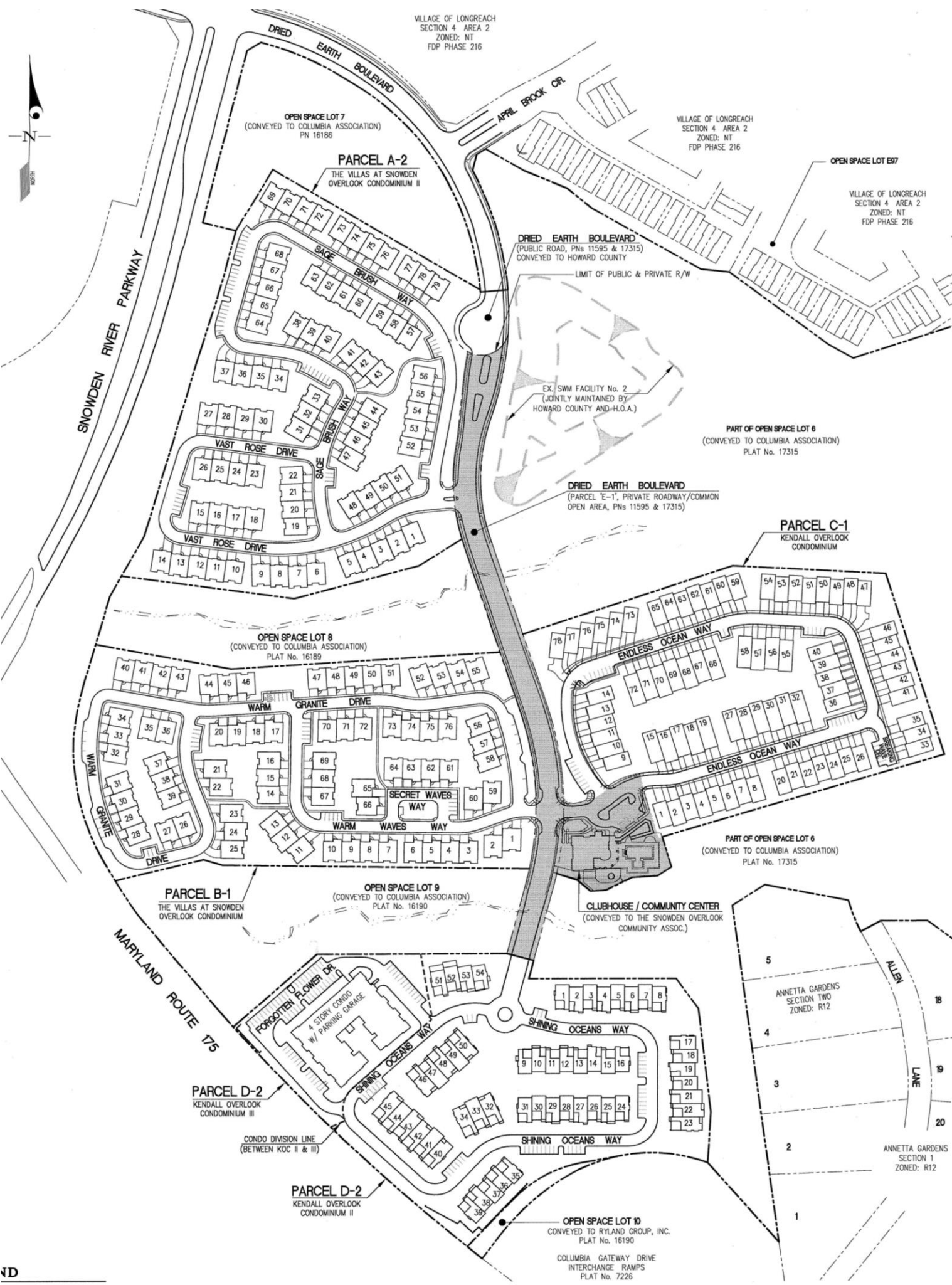


VILLAGE OF LONGREACH  
SECTION 4 AREA 2  
ZONED: NT  
FDP PHASE 216

VILLAGE OF LONGREACH  
SECTION 4 AREA 2  
ZONED: NT  
FDP PHASE 216

VILLAGE OF LONGREACH  
SECTION 4 AREA 2  
ZONED: NT  
FDP PHASE 216



OPEN SPACE LOT 7  
(CONVEYED TO COLUMBIA ASSOCIATION)  
PN 16186

PARCEL A-2  
THE VILLAS AT SNOWDEN  
OVERLOOK CONDOMINIUM II

OPEN SPACE LOT E97

DRIED EARTH BOULEVARD  
(PUBLIC ROAD, PNs 11595 & 17315)  
CONVEYED TO HOWARD COUNTY

LIMIT OF PUBLIC & PRIVATE R/W

EX. SWM FACILITY No. 2  
(JOINTLY MAINTAINED BY  
HOWARD COUNTY AND H.O.A.)

PART OF OPEN SPACE LOT 6  
(CONVEYED TO COLUMBIA ASSOCIATION)  
PLAT No. 17315

DRIED EARTH BOULEVARD  
(PARCEL "E-1", PRIVATE ROADWAY/Common  
OPEN AREA, PNs 11595 & 17315)

PARCEL C-1  
KENDALL OVERLOOK  
CONDOMINIUM

OPEN SPACE LOT 8  
(CONVEYED TO COLUMBIA ASSOCIATION)  
PLAT No. 16189

PART OF OPEN SPACE LOT 6  
(CONVEYED TO COLUMBIA ASSOCIATION)  
PLAT No. 17315

PARCEL B-1  
THE VILLAS AT SNOWDEN  
OVERLOOK CONDOMINIUM

OPEN SPACE LOT 9  
(CONVEYED TO COLUMBIA ASSOCIATION)  
PLAT No. 16190

CLUBHOUSE / COMMUNITY CENTER  
(CONVEYED TO THE SNOWDEN OVERLOOK  
COMMUNITY ASSOC.)

MARYLAND ROUTE 175

PARCEL D-2  
KENDALL OVERLOOK  
CONDOMINIUM III

CONDO DIVISION LINE  
(BETWEEN KOC II & III)

PARCEL D-2  
KENDALL OVERLOOK  
CONDOMINIUM II

OPEN SPACE LOT 10  
CONVEYED TO RYLAND GROUP, INC.  
PLAT No. 16190

COLUMBIA GATEWAY DRIVE  
INTERCHANGE RAMP  
PLAT No. 7226



ANNETTA GARDENS  
SECTION TWO  
ZONED: R12

ANNETTA GARDENS  
SECTION 1  
ZONED: R12